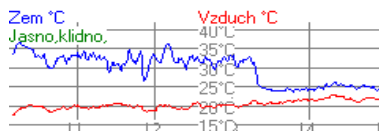




Oficiální Výsledky



všechny kategorie

Poř.	Stč	Jméno	Třída	stroj	Čas	Ztráta
			1. pokus		2. pokus	
			3. pokus		4. pokus	
			5. pokus		6. pokus	
1.	282	TOM	I.kat.benzin nad obsah 4000 ccm	Nissan GTR	10.275	
			10.903 (1) 229.493km/h (1)		10.275 (1) 219.528km/h (1)	
			10.349 (1) 224.789km/h (1)			
2.	527	BOHUSLÁVEK Václav	II.kat.benzin nad 2000 ccm	Shelby Cobra 427	11.597	1.322
			11.597 (1) 210.397km/h (1)		11.813 (1) 210.185km/h (1)	
			11.884 (1) 203.513km/h (1)			
3.	529	HUJER	II.kat.benzin nad 2000 ccm	Pontiac	12.217	1.942
			12.217 (2) 193.587km/h (2)		12.879 (2) 183.610km/h (2)	
			12.375 (2) 185.380km/h (4)			
4.	285	MÁRA	I.kat.benzin nad obsah 4000 ccm	Chevrolet Corvette 6	12.279	2.004
			12.530 (2) 189.331km/h (3)		12.279 (2) 197.886km/h (2)	
			12.373 (2) 189.433km/h (2)			
5.	286	MVOLESKO profituning	I.kat.benzin nad obsah 4000 ccm	Porsche 911	12.510	2.235
			12.683 (3) 193.829km/h (2)		12.659 (3) 193.861km/h (3)	
			12.510 (3) 188.343km/h (3)			
6.	536	MIKI Louda	II.kat.benzin nad 2000 ccm	BMW 335i	12.540	2.265
			12.729 (3) 188.141km/h (3)		16.490 (18) 92.995km/h (19)	
			12.540 (3) 189.560km/h (2)			
7.	524	KRUML Petr	II.kat.benzin nad 2000 ccm	Cobra	12.961	2.686
			13.256 (4) 177.372km/h (6)		12.961 (3) 178.056km/h (4)	
			13.225 (4) 176.630km/h (6)			
8.	403	OŠKRDA Dušan	I.kat.diesel do obsahu 3000 ccm	BMW 330xd	13.189	2.914
			13.241 (1) 169.174km/h (2)		13.189 (1) 173.986km/h (2)	
			13.243 (1) 174.336km/h (1)			
9.	562	FRIC Michal	II.kat.Diesel do 2000 ccm	VW Golf II	13.244	2.969
			13.822 (1) 170.934km/h (1)		13.563 (1) 167.947km/h (1)	
			13.244 (1) 175.603km/h (1)			
10.	247	FRU FRU	II.kat.benzin nad 2000 ccm	Toyota Supra	13.328	3.053
			13.362 (5) 185.642km/h (4)		13.973 (7) 175.212km/h (5)	
			13.328 (5) 183.614km/h (5)			
11.	409	LUCASO	I.kat.diesel do obsahu 3000 ccm	BMW	13.353	3.078
			13.353 (2) 176.643km/h (1)		13.486 (2) 177.069km/h (1)	
			13.572 (3) 171.112km/h (3)			
12.	523	DVOŘÁK Josef	II.kat.benzin nad 2000 ccm	Fiat Coupé	13.368	3.093
			13.424 (6) 176.756km/h (7)		13.477 (4) 170.711km/h (6)	
			13.368 (6) 171.171km/h (7)			
13.	525	WERTTHEIM Honza	II.kat.benzin nad 2000 ccm	Ford GT 40	13.427	3.152
			13.473 (7) 185.228km/h (5)		13.990 (8) 182.218km/h (3)	
			13.427 (7) 186.029km/h (3)			

Poř.	Stč	Jméno	Třída	stroj	Čas	Ztráta
			1. pokus		2. pokus	
			3. pokus		4. pokus	
			5. pokus		6. pokus	
14.	485	ZIZIVZI	II.kat.benzin do 2000 ccm 13.892(1) 171.624km/h (1) 13.487(1) 170.174km/h (1)	Honda Civic	13.487 13.668(1) 172.535km/h (1)	3.212
15.	521	TOULA Jiří	II.kat.benzin nad 2000 ccm 13.491(8) 173.274km/h (8) 14.328(10) 158.035km/h (8)	Brouk	13.491 15.000(12) 109.258km/h (18)	3.216
16.	407	ŠKUBY	I.kat.diesel do obsahu 3000 ccm 13.638(3) 164.806km/h (4) 13.554(2) 173.283km/h (2)	BMW	13.515 (3) 172.504km/h (3)	3.240
17.	526	GULF	II.kat.benzin nad 2000 ccm 13.894(9) 169.129km/h (9)	AC Cobra 427 SC	13.521 (5) 167.568km/h (7)	3.246
18.	325	STANO TDi Drápek	I.kat.diesel do obsahu 2000 ccm 13.866(2) 164.625km/h (3) 13.561(1) 161.088km/h (4)	VW Golf	13.561 13.736(1) 161.163km/h (3)	3.286
19.	244	JAKUB	I.kat.benzin do obsahu 4000 ccm 13.698(1) 170.960km/h (2) 13.655(1) 170.652km/h (1)	Nissan 370 Z	13.579 (1) 165.549km/h (2)	3.304
20.	333	MIRULU	I.kat.diesel do obsahu 2000 ccm 13.611(1) 181.138km/h (1) 13.684(2) 176.921km/h (1)	Škoda Octavia	13.611 13.856(2) 186.417km/h (1)	3.336
21.	284	MAŠEK Jiří	I.kat.benzin nad obsah 4000 ccm 13.782(4) 168.996km/h (4) 13.666(4) 176.002km/h (4)	Lexus ISF	13.651 (4) 170.281km/h (4)	3.376
22.	203	PETR Ryčavý	I.kat.benzin do obsahu 3500 ccm 13.931(1) 178.996km/h (1) 13.709(1) 178.412km/h (1)	Fiat Coupe	13.709 13.744(1) 177.843km/h (1)	3.434
23.	246	KOUBIČ	I.kat.benzin do obsahu 4000 ccm 13.715(2) 172.213km/h (1) 13.824(2) 165.572km/h (2)	BMW M23	13.715 14.424(2) 175.959km/h (1)	3.440
24.	406	LUŘA 330D	I.kat.diesel do obsahu 3000 ccm 13.901(5) 165.046km/h (3) 13.738(4) 166.155km/h (5)	BMW 330D	13.738 21.921(11) 118.537km/h (11)	3.463
25.	404	INDI TDi garage	I.kat.diesel do obsahu 3000 ccm 13.742(4) 162.730km/h (5) 14.151(7) 166.753km/h (4)	Audi A40 30TDi	13.742 13.826(4) 161.797km/h (4)	3.467
26.	534	KOPEC Harakiri	II.kat.benzin nad 2000 ccm 14.123(10) 153.998km/h (12) 14.205(8) 157.682km/h (9)	Subaru Impreza	13.754 (6) 156.178km/h (10)	3.479
27.	167	PRCEK	I.kat.benzin do obsahu 3000 ccm 14.110(1) 166.019km/h (1) 13.935(1) 161.480km/h (1)	BMW M3	13.836 (1) 162.154km/h (2)	3.561
28.	281	GÜRTUER Jakub	I.kat.benzin nad obsah 4000 ccm 15.054(6) 141.620km/h (6) 13.858(5) 161.759km/h (6)	Audi R8	13.858 13.909(5) 160.946km/h (6)	3.583
29.	402	SURMIK Křištof	I.kat.diesel do obsahu 3000 ccm 14.839(9) 155.251km/h (9) 13.901(5) 161.792km/h (6)	Audi A5	13.901 13.917(6) 161.402km/h (5)	3.626

Poř.	Stč	Jméno	Třída	stroj	Čas	Ztráta
			1. pokus		2. pokus	
			3. pokus		4. pokus	
			5. pokus		6. pokus	
30.	411	DANDY	I.kat.diesel do obsahu 3000 ccm	Audi A5	13.906	3.631
			14.136(6) 159.973km/h (7)	13.906 (5)	160.920km/h (6)	
			14.041(6) 160.254km/h (7)			
31.	283	KIR Milan	I.kat.benzin nad obsah 4000 ccm	Audi S6	13.923	3.648
			14.288(5) 165.460km/h (5)	14.310 (6)	165.908km/h (5)	
			13.923(6) 169.823km/h (5)			
32.	322	SAPY	I.kat.diesel do obsahu 2000 ccm	VW Golf IV	14.001	3.726
			14.147(3) 160.976km/h (7)	14.001 (3)	160.707km/h (4)	
			14.002(3) 162.636km/h (3)			
33.	532	BRUTILA	II.kat.benzin nad 2000 ccm	Honda Civic	14.011	3.736
			14.142(11) 156.705km/h (11)	14.011 (9)	156.724km/h (9)	
			14.247(9) 157.632km/h (10)			
34.	81	TRANOVÁ Irena	I.kat.benzin do obsahu 2000 ccm	Lotus Elise	14.079	3.804
			14.108(1) 161.337km/h (1)	14.079 (1)	156.884km/h (2)	
			14.232(1) 159.905km/h (1)			
35.	204	RADZO	I.kat.benzin do obsahu 3500 ccm	VW Golf	14.174	3.899
			14.313(2) 165.490km/h (2)	14.251 (3)	162.114km/h (3)	
			14.174(2) 166.606km/h (2)			
36.	241	CEBE Robert	I.kat.benzin do obsahu 3500 ccm	Subaru Impreza STI	14.223	3.948
			14.369(3) 157.399km/h (4)	14.223 (2)	158.529km/h (4)	
			14.682(4) 147.051km/h (7)			
37.	85	PARY	I.kat.benzin do obsahu 2000 ccm	Nissan Sunny	14.249	3.974
			14.429(2) 154.032km/h (2)	14.304 (2)	160.188km/h (1)	
			14.249(2) 154.342km/h (2)			
38.	162	SEMIR	I.kat.benzin do obsahu 3000 ccm	BMW M3	14.288	4.013
			14.526(2) 153.550km/h (3)	14.288 (2)	163.882km/h (1)	
			14.341(2) 159.834km/h (2)			
39.	43	MÍŠAN	I.kat.benzin do obsahu 1600 ccm	Honda Civic	14.320	4.045
			14.732(1) 159.202km/h (1)	14.367 (1)	160.902km/h (1)	
			14.320(1) 161.755km/h (1)			
40.	561	JIRKA-1	II.kat.Diesel do 2000 ccm	BMW 125d	14.338	4.063
			14.338(2) 158.546km/h (2)	14.837 (2)	150.626km/h (2)	
			15.234(2) 149.537km/h (3)			
41.	130	ROBERT-RX	I.kat.benzin do obsahu 2500 ccm	Honda Prelude	14.386	4.111
			15.412(2) 155.396km/h (2)	14.697 (1)	152.129km/h (2)	
			14.386(1) 153.219km/h (2)			
42.	324	LÁĀA TDi Drápek	I.kat.diesel do obsahu 2000 ccm	VW Golf	14.394	4.119
			14.425(4) 161.895km/h (6)	14.394 (4)	155.531km/h (6)	
			14.884(5) 143.250km/h (9)			
43.	321	KOBBE	I.kat.diesel do obsahu 2000 ccm	Fabia RS	14.466	4.191
			15.511(8) 164.663km/h (2)	14.466 (5)	168.998km/h (2)	
			14.674(4) 169.823km/h (2)			
44.	410	ROUD Ondřej	I.kat.diesel do obsahu 3000 ccm	BMW 330XD	14.524	4.249
			14.579(8) 152.305km/h (10)	14.529 (7)	156.474km/h (9)	
			14.524(8) 156.640km/h (9)			
45.	401	KAPITÁN Šnek	I.kat.diesel do obsahu 3000 ccm	BMW 535d	14.532	4.257
			14.532(7) 160.755km/h (6)	14.670 (8)	159.620km/h (7)	
			15.002(10) 159.110km/h (8)			

Poř.	Stč	Jméno	Třída	stroj	Čas	Ztráta
			1. pokus		2. pokus	
			3. pokus		4. pokus	
			5. pokus		6. pokus	
46.	205	BÁRTIČKA Jiří	I.kat.benzin do obsahu 3500 ccm	BMW	14.621	4.346
			14.861(4) 158.494km/h (3)	14.688(4) 165.181km/h (2)		
			14.621(3) 165.075km/h (3)			
47.	537	TIFANY	II.kat.benzin nad 2000 ccm	Škoda Octavia	14.622	4.347
			14.777(12) 149.742km/h (14)	14.622(10) 154.880km/h (11)		
			14.727(11) 154.963km/h (11)			
48.	362	RADEK156	I.kat.diesel do obsahu 2500 ccm	Alfa Romeo	14.660	4.385
			14.757(1) 166.770km/h (1)	16.219(1) 142.653km/h (1)		
			14.660(1) 161.407km/h (1)			
49.	408	ŠTRACH Martin	I.kat.diesel do obsahu 3000 ccm	BMW 535D	14.712	4.437
			14.912(10) 158.730km/h (8)	18.031(10) 157.483km/h (8)		
			14.712(9) 156.615km/h (10)			
50.	48	DAVID VTi	I.kat.benzin do obsahu 1600 ccm	Honda Civic	14.769	4.494
			14.936(2) 148.729km/h (3)	14.865(2) 146.636km/h (4)		
			14.769(2) 152.298km/h (2)			
51.	84	MATOUŠ Jindřich	I.kat.benzin do obsahu 2000 ccm	Opel Kadet GTi	14.775	4.500
			14.881(3) 149.804km/h (3)	16.614(6) 107.494km/h (8)		
			14.775(3) 149.343km/h (3)			
52.	131	ZAHÁLKA Václav	I.kat.benzin do obsahu 2500 ccm	Fiat Uno	14.780	4.505
			15.072(1) 158.054km/h (1)	14.843(2) 160.452km/h (1)		
			14.780(2) 162.811km/h (1)			
53.	405	ROUBIC	I.kat.diesel do obsahu 3000 ccm	Audi A6	14.802	4.527
			15.044(11) 152.134km/h (11)	14.802(9) 147.598km/h (10)		
			15.034(11) 152.874km/h (11)			
54.	47	PETKA	I.kat.benzin do obsahu 1600 ccm	Honda CRX	14.836	4.561
			15.094(3) 153.948km/h (2)	14.905(3) 153.631km/h (2)		
			14.836(3) 151.562km/h (3)			
55.	522	WARHOL	II.kat.benzin nad 2000 ccm	Fiat Coupe	14.978	4.703
			15.310(14) 153.046km/h (13)	14.978(11) 160.892km/h (8)		
			15.480(15) 147.918km/h (15)			
56.	530	MATTY	II.kat.benzin nad 2000 ccm	Škoda Fabia	14.983	4.708
			15.288(13) 148.201km/h (17)	15.057(13) 148.111km/h (14)		
			14.983(12) 149.388km/h (14)			
57.	323	MÁČA- TDi Drápek	I.kat.diesel do obsahu 2000 ccm	VW Golf	15.005	4.730
			15.005(5) 162.131km/h (5)	15.156(6) 157.146km/h (5)		
			17.469(15) 141.726km/h (10)			
58.	163	HORÁK Jan	I.kat.benzin do obsahu 3000 ccm	Opel Kadet 2.0	15.084	4.809
			15.313(3) 142.825km/h (7)	15.084(3) 143.823km/h (5)		
			15.162(4) 144.842km/h (5)			
59.	164	SKŘIVÁNEK Tomáš	I.kat.benzin do obsahu 3000 ccm	BMW 330i	15.091	4.816
			15.373(4) 154.855km/h (2)	15.204(4) 155.038km/h (3)		
			15.091(3) 157.787km/h (3)			
60.	327	PROCHY	I.kat.diesel do obsahu 2000 ccm	Seat Ibiza	15.145	4.870
			15.145(6) 162.568km/h (4)	15.205(7) 153.211km/h (7)		
			15.718(8) 160.094km/h (5)			
61.	206	MĚSÍC	I.kat.benzin do obsahu 3500 ccm	VW Golf 5 GTi	15.167	4.892
			15.423(6) 148.461km/h (7)	15.167(5) 153.972km/h (5)		
			15.533(6) 149.775km/h (5)			

Poř.	Stč	Jméno	Třída	stroj	Čas	Ztráta
			1. pokus		2. pokus	
			3. pokus		4. pokus	
			5. pokus		6. pokus	
62.	4	DREXLER Tomáš	I.kat.benzin obsahu 1400 ccm 15.502(1) 143.866km/h (1) 15.460(1) 138.106km/h (1)	Škoda Favorit	15.173 15.173 (1) 145.338km/h (1)	4.898
63.	533	MORYMOTO	II.kat.benzin nad 2000 ccm 15.526(16) 146.603km/h (18) 15.182(13) 154.192km/h (12)	BMW E30	15.182 15.229 (14) 147.839km/h (15)	4.907
64.	45	LUKÁŠ	I.kat.benzin do obsahu 1600 ccm 15.438(5) 144.675km/h (4) 15.215(4) 146.347km/h (4)	Honda CRX	15.215 15.338 (4) 145.453km/h (5)	4.940
65.	528	PACOŠ	II.kat.benzin nad 2000 ccm 17.604(18) 148.568km/h (16) 15.225(14) 151.764km/h (13)	Sebrin	15.225 15.645 (16) 151.317km/h (12)	4.950
66.	328	ŠUNKA	I.kat.diesel do obsahu 2000 ccm 16.165(10) 139.345km/h (10) 15.237(6) 156.294km/h (6)	VW Golf II	15.237 15.498 (8) 150.796km/h (9)	4.962
67.	210	TAJBL Michal	I.kat.benzin do obsahu 3500 ccm 15.367(5) 147.595km/h (8) 15.529(5) 154.063km/h (4)	Audi A3	15.276 15.276 (6) 150.360km/h (8)	5.001
68.	563	VENCA	II.kat.Diesel do 2000 ccm 15.809(4) 149.959km/h (3) 16.965(4) 137.830km/h (4)	Škoda Felicia	15.296 15.296 (3) 149.556km/h (4)	5.021
69.	207	DRESIK Scuderia Itai	I.kat.benzin do obsahu 3500 ccm 15.429(7) 151.780km/h (5) 15.538(7) 147.245km/h (6)	Lancia Delta HF	15.378 15.378 (7) 153.198km/h (6)	5.103
70.	564	REGITKO Roman	II.kat.Diesel do 2000 ccm 15.631(3) 147.246km/h (4) 15.404(3) 150.405km/h (2)	VW Golf	15.404 15.487 (4) 149.770km/h (3)	5.129
71.	41	LUKÁŠ Zeman	I.kat.benzin do obsahu 1600 ccm 15.421(4) 143.830km/h (5) 15.609(5) 143.978km/h (7)	Honda Civic VTi	15.421 15.633 (6) 144.112km/h (6)	5.146
72.	535	ABELES	II.kat.benzin nad 2000 ccm 15.422(15) 158.852km/h (10) 17.520(17) 135.549km/h (17)	Seat Ibiza	15.422 15.960 (17) 144.439km/h (16)	5.147
73.	329	MILI TDi Drápek	I.kat.diesel do obsahu 2000 ccm 15.457(7) 146.573km/h (9) 15.567(7) 151.737km/h (7)	Seat Leon	15.457 15.534 (9) 152.464km/h (8)	5.182
74.	49	FÍLA	I.kat.benzin do obsahu 1600 ccm 16.163(7) 140.593km/h (7) 15.666(7) 144.588km/h (5)	Honad Civic	15.500 15.500 (5) 150.009km/h (3)	5.225
75.	166	OLAN	I.kat.benzin do obsahu 3000 ccm 16.113(6) 130.422km/h (9) 15.610(5) 142.430km/h (8)	BMW	15.557 15.557 (5) 143.237km/h (6)	5.282
76.	531	VW Golf II	II.kat.benzin nad 2000 ccm 15.617(17) 149.091km/h (15) 15.901(16) 145.000km/h (16)	VW Golf II	15.617 15.638 (15) 149.730km/h (13)	5.342
77.	42	ŠVÁB	I.kat.benzin do obsahu 1600 ccm 16.976(8) 124.762km/h (9) 15.627(6) 144.310km/h (6)	Honda CRX	15.627 15.780 (8) 143.494km/h (7)	5.352

Poř.	Stč	Jméno	Třída	stroj	Čas	Ztráta
			1. pokus		2. pokus	
			3. pokus		4. pokus	
			5. pokus		6. pokus	
78.	201	MILIS.19	I.kat.benzin do obsahu 3500 ccm	Mitsubishi Eclips	15.655	5.380
			16.186(8) 148.764km/h (6)	15.655(8)	153.023km/h (7)	
			16.365(9) 141.860km/h (10)			
79.	82	HRABĚ Martin	I.kat.benzin do obsahu 2000 ccm	Mitsubishi Eclips	15.693	5.418
			15.837(4) 146.469km/h (4)	15.693(3)	151.235km/h (3)	
			16.373(4) 139.909km/h (5)			
80.	50	PATYS	I.kat.benzin do obsahu 1600 ccm	Honda CRX	15.720	5.445
			15.799(6) 142.865km/h (6)	15.778(7)	142.171km/h (8)	
			15.720(8) 142.376km/h (8)			
81.	161	POSPI	I.kat.benzin do obsahu 3000 ccm	BMW E46 328i	15.724	5.449
			16.442(8) 144.386km/h (5)	16.132(7)	143.230km/h (7)	
			15.724(6) 145.936km/h (4)			
82.	243	MUSTAFA	I.kat.benzin do obsahu 4000 ccm	Ford Mustang	15.763	5.488
			16.254(3) 148.256km/h (3)	15.763(3)	149.143km/h (3)	
			15.995(3) 148.766km/h (3)			
83.	169	MARCEL Brožek	I.kat.benzin do obsahu 3000 ccm	BMW E46 330ci	15.798	5.523
			16.112(5) 144.666km/h (4)	15.798(6)	141.891km/h (9)	
			15.934(7) 143.433km/h (7)			
84.	334	VARGY	I.kat.diesel do obsahu 2000 ccm	Seat Leon	15.831	5.556
			15.948(9) 147.057km/h (8)	15.831(10)	149.857km/h (10)	
			16.015(9) 147.332km/h (8)			
85.	202	ZARDA	I.kat.benzin do obsahu 3500 ccm	Mitsubishi Eclips	15.836	5.561
			18.112(11) 121.376km/h (11)	16.133(9)	146.643km/h (9)	
			15.836(8) 146.768km/h (8)			
86.	123	WOLFRAM Vladimír	I.kat.benzin do obsahu 2500 ccm	Fiat Punto GT	15.859	5.584
			15.885(3) 143.655km/h (4)	15.859(3)	144.246km/h (4)	
			16.354(6) 137.633km/h (7)			
87.	484	ĎUBY	II.kat.benzin do 2000 ccm	Honda CRX	15.885	5.610
			16.068(2) 140.861km/h (2)	16.096(2)	142.472km/h (2)	
			15.885(2) 145.088km/h (2)			
88.	3	POVÝŠIL Lukáš	I.kat.benzin obsahu 1400 ccm	Citroen Saxo	15.956	5.681
			16.056(2) 136.318km/h (3)	15.956(2)	137.801km/h (2)	
			16.018(2) 133.705km/h (3)			
89.	124	JIRKA VTi	I.kat.benzin do obsahu 2500 ccm	Honda Prelude 4G	16.072	5.797
			16.142(4) 146.748km/h (3)	16.072(4)	145.553km/h (3)	
			16.276(4) 143.907km/h (3)			
90.	165	BERY	I.kat.benzin do obsahu 3000 ccm	Opel Omega	16.122	5.847
			16.723(9) 134.673km/h (8)	16.403(9)	144.822km/h (4)	
			16.122(8) 140.959km/h (9)			
91.	168	BELLE Tomáš	I.kat.benzin do obsahu 3000 ccm	Peugeot 406	16.196	5.921
			16.277(7) 143.023km/h (6)	16.368(8)	142.386km/h (8)	
			16.196(9) 143.942km/h (6)			
92.	125	KASKI	I.kat.benzin do obsahu 2500 ccm	BMW	16.232	5.957
			16.391(5) 136.599km/h (7)	16.581(8)	136.571km/h (7)	
			16.232(3) 137.401km/h (8)			
93.	133	PAJANROSS	I.kat.benzin do obsahu 2500 ccm	Hond Accord RR	16.281	6.006
			16.398(6) 142.774km/h (5)	16.405(5)	142.196km/h (5)	
			16.281(5) 137.941km/h (6)			

Poř.	Stč	Jméno	Třída	stroj	Čas	Ztráta
			1. pokus		2. pokus	
			3. pokus		4. pokus	
			5. pokus		6. pokus	
94.	208	STRAČENKA	I.kat.benzin do obsahu 3500 ccm	škoda Octavia	16.326	6.051
			16.762(9) 142.257km/h (9)	16.326 (10) 143.414km/h (10)		
			16.366(10) 143.253km/h (9)			
95.	86	PAVEL Scuderia ItalM	I.kat.benzin do obsahu 2000 ccm	Alfa Romeo 147	16.342	6.067
			16.533(5) 136.234km/h (5)	16.342 (4) 141.746km/h (4)		
			16.417(5) 136.385km/h (6)			
96.	46	BAKY	I.kat.benzin do obsahu 1600 ccm	Honda CRX	16.353	6.078
			17.207(9) 140.204km/h (8)	16.353 (9) 142.007km/h (9)		
			16.413(9) 129.069km/h (9)			
97.	361	KRISTE	I.kat.diesel do obsahu 2500 ccm	BMW	16.364	6.089
			16.604(2) 141.148km/h (2)	16.364 (2) 136.304km/h (2)		
			16.731(2) 136.586km/h (2)			
98.	245	HEFA	I.kat.benzin do obsahu 4000 ccm	Ford Probe	16.414	6.139
			16.632(4) 136.658km/h (4)	16.414 (4) 137.835km/h (4)		
			16.620(4) 137.704km/h (4)			
99.	88	ŽŮREK David	I.kat.benzin do obsahu 2000 ccm	Peugeot 206 S16	16.496	6.221
			16.943(6) 133.763km/h (6)	16.577 (5) 137.470km/h (5)		
			16.496(6) 141.205km/h (4)			
100.	126	TOCI	I.kat.benzin do obsahu 2500 ccm	BMW	16.498	6.223
			16.498(7) 134.849km/h (9)	16.551 (7) 134.854km/h (10)		
			16.580(8) 135.223km/h (10)			
101.	129	LUKY	I.kat.benzin do obsahu 2500 ccm	Ford Probe	16.527	6.252
			16.574(8) 135.133km/h (8)	16.527 (6) 135.324km/h (8)		
			16.671(9) 134.209km/h (11)			
102.	326	GROF Marek	I.kat.diesel do obsahu 2000 ccm	VW Golf IV	16.537	6.262
			16.671(11) 132.740km/h (12)	16.590 (11) 139.876km/h (11)		
			16.537(10) 134.563km/h (13)			
103.	132	RICHINA	I.kat.benzin do obsahu 2500 ccm	BMW E36 325i	16.557	6.282
			17.471(11) 131.106km/h (12)	16.744 (11) 129.583km/h (12)		
			16.557(7) 135.366km/h (9)			
104.	2	LAFY	I.kat.benzin obsahu 1400 ccm	Honda Civic	16.588	6.313
			16.588(3) 133.812km/h (4)	16.688 (4) 129.708km/h (5)		
			16.726(3) 129.767km/h (4)			
105.	6	PUNKERKA 89	I.kat.benzin obsahu 1400 ccm	Honda Civic	16.610	6.335
			16.610(4) 138.955km/h (2)	16.621 (3) 131.342km/h (4)		
			16.815(5) 134.078km/h (2)			
106.	121	WURA Lukáš	I.kat.benzin do obsahu 2500 ccm	Alfa Romeo 156	16.655	6.380
			16.778(9) 140.203km/h (6)	16.655 (9) 139.861km/h (6)		
			17.187(11) 127.970km/h (12)			
107.	127	LHOTY	I.kat.benzin do obsahu 2500 ccm	BMW	16.675	6.400
			16.974(10) 133.806km/h (10)	16.683 (10) 135.127km/h (9)		
			16.675(10) 140.548km/h (4)			
108.	335	E30	I.kat.diesel do obsahu 2000 ccm	BMW E46 320D	16.754	6.479
			16.754(12) 131.975km/h (13)	16.768 (12) 136.777km/h (12)		
			16.895(11) 135.330km/h (12)			
109.	5	GOLFI	I.kat.benzin obsahu 1400 ccm	Honda Civis	16.806	6.531
			17.141(5) 127.734km/h (6)	16.944 (5) 132.156km/h (3)		
			16.806(4) 129.332km/h (5)			

Poř.	Stč	Jméno	Třída	stroj	Čas	Ztráta
			1. pokus 3. pokus 5. pokus		2. pokus 4. pokus 6. pokus	
110.	487	PUSTIL Harakiri	II.kat.benzin do 2000 ccm 18.120(5) 121.406km/h (5) 16.862(3) 136.899km/h (3)	Mazda 323F	16.862 17.395(5) 131.434km/h (3)	6.587
111.	481	VAVRUŠKA Jiří	II.kat.benzin do 2000 ccm 17.362(4) 127.349km/h (4) 16.920(4) 124.455km/h (6)	Škoda Favorit	16.920 17.282(4) 123.994km/h (6)	6.645
112.	332	HUDEC Zdeněk	I.kat.diesel do obsahu 2000 ccm 17.194(13) 133.403km/h (11) 17.022(12) 136.159km/h (11)	Škoda Octavia	16.929 16.929(13) 136.100km/h (13)	6.654
113.	488	KRÁLÍK	II.kat.benzin do 2000 ccm 17.130(3) 128.222km/h (3) 17.032(5) 129.182km/h (4)	Mazda 323 F BG	17.032 17.072(3) 128.919km/h (4)	6.757
114.	331	ČUDLA	I.kat.diesel do obsahu 2000 ccm 17.396(14) 130.124km/h (14) 17.130(13) 131.854km/h (15)	Škoda Octavia	17.044 17.044(14) 132.349km/h (14)	6.769
115.	209	KOUBA	I.kat.benzin do obsahu 3500 ccm W 17.441(10) 132.734km/h (10) 17.244(11) 131.275km/h (11)		17.244 17.443(11) 131.907km/h (11)	6.969
116.	128	LUKAASSSS	I.kat.benzin do obsahu 2500 ccm 17.532(12) 132.412km/h (11) 17.472(12) 139.417km/h (5)	Opel Astra	17.262 17.262(12) 133.831km/h (11)	6.987
117.	1	TOMEK	I.kat.benzin obsahu 1400 ccm 17.363(6) 130.404km/h (5) 17.475(6) 126.660km/h (6)	Honda Civic	17.363 17.590(6) 125.414km/h (6)	7.088
118.	330	FLOP	I.kat.diesel do obsahu 2000 ccm 17.898(15) 129.961km/h (15) 17.443(14) 134.506km/h (14)	Škoda Octvia II	17.443 17.780(15) 130.486km/h (15)	7.168
119.	486	MARTY	II.kat.benzin do 2000 ccm 18.249(6) 120.635km/h (6) 17.458(6) 127.135km/h (5)	Škoda	17.458 17.522(6) 126.068km/h (5)	7.183
120.	87	DANČA Harakiri	I.kat.benzin do obsahu 2000 ccm 18.942(8) 121.514km/h (7) 17.920(7) 126.582km/h (7)	Mazda	17.920 18.894(8) 119.798km/h (7)	7.645
121.	51	RÁJA	I.kat.benzin do obsahu 1600 ccm 18.403(10) 121.759km/h (10) 18.033(10) 123.867km/h (10)	Mazda 323 F B6	18.033 18.115(10) 122.560km/h (10)	7.758
122.	44	ANDRLE Lukáš	II.kat.benzin nad 2000 ccm 13:39:21(19) 121.259km/h (19) 18.092(18) 124.296km/h (18)	BMW	18.092 19.029(19) 116.426km/h (17)	7.817
123.	482	JOHN	II.kat.benzin do 2000 ccm 18.663(7) 118.098km/h (7) 18.310(7) 119.631km/h (7)	Škoda Fabia	18.264 18.264(7) 122.638km/h (7)	7.989
124.	83	KARLOS	I.kat.benzin do obsahu 2000 ccm 18.828(7) 116.812km/h (8) 18.288(8) 125.980km/h (8)	BMW	18.288 18.738(7) 122.604km/h (6)	8.013
125.	122	KENTAUR	I.kat.benzin do obsahu 2500 ccm W 18.938(13) 117.574km/h (13) 18.416(13) 123.329km/h (13)	W Passat	18.416 19.047(13) 111.453km/h (13)	8.141

Poř.	Stč	Jméno	Třída 1. pokus 3. pokus 5. pokus	stroj	Čas 2. pokus 4. pokus 6. pokus	Ztráta
126.	483	JÍČKA	<i>II.kat.benzin do 2000 ccm</i> 19.135(8) 115.248km/h (8) 18.938(8) 116.209km/h (8)	Škoda Fabia	18.938 20.016 (8) 107.525km/h (8)	8.663
127.	52	PŠENDA	<i>I.kat.benzin do obsahu 1600 ccm</i> 19.170(11) 118.910km/h (11) 19.095(11) 115.365km/h (11)	Opel Vectra B	19.095 19.193 (11) 114.263km/h (11)	8.820
DNS	233		<i>všechny kategorie</i>		<i>Nestart.</i>	
DNS	242	KARLOS	<i>I.kat.benzin do obsahu 4000 ccm</i>	Mercedes Benz	<i>Nestart.</i>	
DNS	253		<i>všechny kategorie</i>		<i>Nestart.</i>	
DNS	336	SMS	<i>I.kat.diesel do obsahu 2000 ccm</i>	Megane	<i>Nestart.</i>	
DNS	363	ROTH kamil	<i>I.kat.diesel do obsahu 2500 ccm</i>	Alfa Romeo 166	<i>Nestart.</i>	

Přihlášeno 134
Startovalo 127
Klasifikováno 127

I.kat.benzin obsahu 1400 ccm

Poř.	Stč	Jméno	Třída 1. pokus 3. pokus 5. pokus	stroj	Čas 2. pokus 4. pokus 6. pokus	Ztráta
1.	4	DREXLER Tomáš	<i>I.kat.benzin obsahu 1400 ccm</i> 15.502(1) 143.866km/h (1) 15.460(1) 138.106km/h (1)	Škoda Favorit	15.173 15.173 (1) 145.338km/h (1)	
2.	3	POVÝŠIL Lukáš	<i>I.kat.benzin obsahu 1400 ccm</i> 16.056(2) 136.318km/h (3) 16.018(2) 133.705km/h (3)	Citroen Saxo	15.956 15.956 (2) 137.801km/h (2)	0.783
3.	2	LAFY	<i>I.kat.benzin obsahu 1400 ccm</i> 16.588(3) 133.812km/h (4) 16.726(3) 129.767km/h (4)	Honda Civic	16.588 16.688 (4) 129.708km/h (5)	1.415
4.	6	PUNKERKA 89	<i>I.kat.benzin obsahu 1400 ccm</i> 16.610(4) 138.955km/h (2) 16.815(5) 134.078km/h (2)	Honda Civic	16.610 16.621 (3) 131.342km/h (4)	1.437
5.	5	GOLFI	<i>I.kat.benzin obsahu 1400 ccm</i> 17.141(5) 127.734km/h (6) 16.806(4) 129.332km/h (5)	Honda Civic	16.806 16.944 (5) 132.156km/h (3)	1.633
6.	1	TOMEK	<i>I.kat.benzin obsahu 1400 ccm</i> 17.363(6) 130.404km/h (5) 17.475(6) 126.660km/h (6)	Honda Civic	17.363 17.590 (6) 125.414km/h (6)	2.190

Přihlášeno 6
 Startovalo 6
 Klasifikováno 6

I.kat.benzin do obsahu 1600 ccm

Poř.	Stč	Jméno	Třída		stroj	Čas		Ztráta
			1. pokus	3. pokus		2. pokus	4. pokus	
1.	43	MÍŠAN	I.kat.benzin do obsahu 1600 ccm		Honda Civic	14.320		
			14.732(1)	159.202km/h (1)		14.367 (1)	160.902km/h (1)	
			14.320(1)	161.755km/h (1)				
2.	48	DAVID VTi	I.kat.benzin do obsahu 1600 ccm		Honda Civic	14.769		0.449
			14.936(2)	148.729km/h (3)		14.865 (2)	146.636km/h (4)	
			14.769(2)	152.298km/h (2)				
3.	47	PETKA	I.kat.benzin do obsahu 1600 ccm		Honda CRX	14.836		0.516
			15.094(3)	153.948km/h (2)		14.905 (3)	153.631km/h (2)	
			14.836(3)	151.562km/h (3)				
4.	45	LUKÁŠ	I.kat.benzin do obsahu 1600 ccm		Honda CRX	15.215		0.895
			15.438(5)	144.675km/h (4)		15.338 (4)	145.453km/h (5)	
			15.215(4)	146.347km/h (4)				
5.	41	LUKÁŠ Zeman	I.kat.benzin do obsahu 1600 ccm		Honda Civic VTi	15.421		1.101
			15.421(4)	143.830km/h (5)		15.633 (6)	144.112km/h (6)	
			15.609(5)	143.978km/h (7)				
6.	49	FÍLA	I.kat.benzin do obsahu 1600 ccm		Honad Civic	15.500		1.180
			16.163(7)	140.593km/h (7)		15.500 (5)	150.009km/h (3)	
			15.666(7)	144.588km/h (5)				
7.	42	ŠVÁB	I.kat.benzin do obsahu 1600 ccm		Honda CRX	15.627		1.307
			16.976(8)	124.762km/h (9)		15.780 (8)	143.494km/h (7)	
			15.627(6)	144.310km/h (6)				
8.	50	PATYS	I.kat.benzin do obsahu 1600 ccm		Honda CRX	15.720		1.400
			15.799(6)	142.865km/h (6)		15.778 (7)	142.171km/h (8)	
			15.720(8)	142.376km/h (8)				
9.	46	BAKY	I.kat.benzin do obsahu 1600 ccm		Honda CRX	16.353		2.033
			17.207(9)	140.204km/h (8)		16.353 (9)	142.007km/h (9)	
			16.413(9)	129.069km/h (9)				
10.	51	RÁJA	I.kat.benzin do obsahu 1600 ccm		Mazda 323 F B6	18.033		3.713
			18.403(10)	121.759km/h (10)		18.115 (10)	122.560km/h (10)	
			18.033(10)	123.867km/h (10)				
11.	52	PŠENDA	I.kat.benzin do obsahu 1600 ccm		Opel Vectra B	19.095		4.775
			19.170(11)	118.910km/h (11)		19.193 (11)	114.263km/h (11)	
			19.095(11)	115.365km/h (11)				

Přihlášeno 11
 Startovalo 11
 Klasifikováno 11

I.kat.benzin do obsahu 2000 ccm

Poř.	Stč	Jméno	Třída	stroj	Čas	Ztráta
			1. pokus		2. pokus	
			3. pokus		4. pokus	
			5. pokus		6. pokus	
1.	81	TRANOVÁ Irena	I.kat.benzin do obsahu 2000 ccm Lotus Elise		14.079	
			14.108 (1)	161.337km/h (1)	14.079 (1)	156.884km/h (2)
			14.232 (1)	159.905km/h (1)		
2.	85	PARY	I.kat.benzin do obsahu 2000 ccm Nissan Sunny		14.249	0.170
			14.429 (2)	154.032km/h (2)	14.304 (2)	160.188km/h (1)
			14.249 (2)	154.342km/h (2)		
3.	84	MATOUŠ Jindřich	I.kat.benzin do obsahu 2000 ccm Opel Kadet GTi		14.775	0.696
			14.881 (3)	149.804km/h (3)	16.614 (6)	107.494km/h (8)
			14.775 (3)	149.343km/h (3)		
4.	82	HRABĚ Martin	I.kat.benzin do obsahu 2000 ccm Mitsubischi Eclips		15.693	1.614
			15.837 (4)	146.469km/h (4)	15.693 (3)	151.235km/h (3)
			16.373 (4)	139.909km/h (5)		
5.	86	PAVEL Scuderia ItalM	I.kat.benzin do obsahu 2000 ccm Alfa Romeo 147		16.342	2.263
			16.533 (5)	136.234km/h (5)	16.342 (4)	141.746km/h (4)
			16.417 (5)	136.385km/h (6)		
6.	88	ŽŮREK David	I.kat.benzin do obsahu 2000 ccm Peugeot 206 S16		16.496	2.417
			16.943 (6)	133.763km/h (6)	16.577 (5)	137.470km/h (5)
			16.496 (6)	141.205km/h (4)		
7.	87	DANČA Harakiri	I.kat.benzin do obsahu 2000 ccm Mazda		17.920	3.841
			18.942 (8)	121.514km/h (7)	18.894 (8)	119.798km/h (7)
			17.920 (7)	126.582km/h (7)		
8.	83	KARLOS	I.kat.benzin do obsahu 2000 ccm BMW		18.288	4.209
			18.828 (7)	116.812km/h (8)	18.738 (7)	122.601km/h (6)
			18.288 (8)	125.980km/h (8)		

Přihlášeno 8
 Startovalo 8
 Klasifikováno 8

I.kat.benzin do obsahu 2500 ccm

Poř.	Stč	Jméno	Třída	stroj	Čas	Ztráta
			1. pokus		2. pokus	
			3. pokus		4. pokus	
			5. pokus		6. pokus	
1.	130	ROBERT-RX	I.kat.benzin do obsahu 2500 ccm Honda Prelude		14.386	
			15.412 (2)	155.396km/h (2)	14.697 (1)	152.129km/h (2)
			14.386 (1)	153.219km/h (2)		
2.	131	ZAHÁLKA Václav	I.kat.benzin do obsahu 2500 ccm Fiat Uno		14.780	0.394
			15.072 (1)	158.054km/h (1)	14.843 (2)	160.452km/h (1)
			14.780 (2)	162.811km/h (1)		
3.	123	WOLFRAM Vladimír	I.kat.benzin do obsahu 2500 ccm Fiat Punto GT		15.859	1.473
			15.885 (3)	143.655km/h (4)	15.859 (3)	144.246km/h (4)
			16.354 (6)	137.633km/h (7)		
4.	124	JIRKA VTi	I.kat.benzin do obsahu 2500 ccm Honda Prelude 4G		16.072	1.686
			16.142 (4)	146.748km/h (3)	16.072 (4)	145.553km/h (3)
			16.276 (4)	143.907km/h (3)		

Poř.	Stč	Jméno	Třída		stroj	Čas		Ztráta
			1. pokus	3. pokus		2. pokus	4. pokus	
5.	125	KASKI	I.kat.benzin do obsahu 2500 ccm		BMW	16.232		1.846
			16.391 (5)	136.599km/h (7)		16.581 (8)	136.571km/h (7)	
			16.232 (3)	137.401km/h (8)				
6.	133	PAJANROSS	I.kat.benzin do obsahu 2500 ccm		Hond Accord RR	16.281		1.895
			16.398 (6)	142.774km/h (5)		16.405 (5)	142.196km/h (5)	
			16.281 (5)	137.941km/h (6)				
7.	126	TOCI	I.kat.benzin do obsahu 2500 ccm		BMW	16.498		2.112
			16.498 (7)	134.849km/h (9)		16.551 (7)	134.854km/h (10)	
			16.580 (8)	135.223km/h (10)				
8.	129	LUKY	I.kat.benzin do obsahu 2500 ccm		Ford Probe	16.527		2.141
			16.574 (8)	135.133km/h (8)		16.527 (6)	135.324km/h (8)	
			16.671 (9)	134.209km/h (11)				
9.	132	RICHINA	I.kat.benzin do obsahu 2500 ccm		BMW E36 325i	16.557		2.171
			17.471 (11)	131.106km/h (12)		16.744 (11)	129.583km/h (12)	
			16.557 (7)	135.366km/h (9)				
10.	121	WURA Lukáš	I.kat.benzin do obsahu 2500 ccm		Alfa Romeo 156	16.655		2.269
			16.778 (9)	140.203km/h (6)		16.655 (9)	139.861km/h (6)	
			17.187 (11)	127.970km/h (12)				
11.	127	LHOTY	I.kat.benzin do obsahu 2500 ccm		BMW	16.675		2.289
			16.974 (10)	133.806km/h (10)		16.683 (10)	135.127km/h (9)	
			16.675 (10)	140.548km/h (4)				
12.	128	LUKAASSSS	I.kat.benzin do obsahu 2500 ccm		Opel Astra	17.262		2.876
			17.532 (12)	132.412km/h (11)		17.262 (12)	133.831km/h (11)	
			17.472 (12)	139.417km/h (5)				
13.	122	KENTAUR	I.kat.benzin do obsahu 2500 ccm		W Passat	18.416		4.030
			18.938 (13)	117.571km/h (13)		19.047 (13)	111.453km/h (13)	
			18.416 (13)	123.329km/h (13)				

Přihlášeno 13
 Startovalo 13
 Klasifikováno 13

I.kat.benzin do obsahu 3000 ccm

Poř.	Stč	Jméno	Třída		stroj	Čas		Ztráta
			1. pokus	3. pokus		2. pokus	4. pokus	
1.	167	PRCEK	I.kat.benzin do obsahu 3000 ccm		BMW M3	13.836		
			14.110 (1)	166.019km/h (1)		13.836 (1)	162.154km/h (2)	
			13.935 (1)	161.480km/h (1)				
2.	162	SEMIR	I.kat.benzin do obsahu 3000 ccm		BMW M3	14.288		0.452
			14.526 (2)	153.550km/h (3)		14.288 (2)	163.882km/h (1)	
			14.341 (2)	159.834km/h (2)				
3.	163	HORÁK Jan	I.kat.benzin do obsahu 3000 ccm		Opel Kadet 2.0	15.084		1.248
			15.313 (3)	142.825km/h (7)		15.084 (3)	143.823km/h (5)	
			15.162 (4)	144.842km/h (5)				
4.	164	SKŘIVÁNEK Tomáš	I.kat.benzin do obsahu 3000 ccm		BMW 330i	15.091		1.255
			15.373 (4)	154.855km/h (2)		15.204 (4)	155.038km/h (3)	
			15.091 (3)	157.787km/h (3)				

Poř.	Stč	Jméno	Třída	stroj	Čas	Ztráta
			1. pokus		2. pokus	
			3. pokus		4. pokus	
			5. pokus		6. pokus	
5.	166	OLAN	I.kat.benzin do obsahu 3000 ccm	BMW	15.557	1.721
			16.113(6) 130.422km/h (9)		15.557(5) 143.237km/h (6)	
			15.610(5) 142.430km/h (8)			
6.	161	POSPI	I.kat.benzin do obsahu 3000 ccm	BMW E46 328i	15.724	1.888
			16.442(8) 144.386km/h (5)		16.132(7) 143.230km/h (7)	
			15.724(6) 145.936km/h (4)			
7.	169	MARCEL Brožek	I.kat.benzin do obsahu 3000 ccm	BMW E46 330ci	15.798	1.962
			16.112(5) 144.666km/h (4)		15.798(6) 141.891km/h (9)	
			15.934(7) 143.433km/h (7)			
8.	165	BERY	I.kat.benzin do obsahu 3000 ccm	Opel Omega	16.122	2.286
			16.723(9) 134.673km/h (8)		16.403(9) 144.822km/h (4)	
			16.122(8) 140.959km/h (9)			
9.	168	BELLE Tomáš	I.kat.benzin do obsahu 3000 ccm	Peugeot 406	16.196	2.360
			16.277(7) 143.023km/h (6)		16.368(8) 142.386km/h (8)	
			16.196(9) 143.942km/h (6)			

Přihlášeno 9

Startovalo 9

Klasifikováno 9

I.kat.benzin do obsahu 3500 ccm

Poř.	Stč	Jméno	Třída	stroj	Čas	Ztráta
			1. pokus		2. pokus	
			3. pokus		4. pokus	
			5. pokus		6. pokus	
1.	203	PETR Ryčavý	I.kat.benzin do obsahu 3500 ccm	Fiat Coupe	13.709	
			13.931(1) 178.396km/h (1)		13.744(1) 177.843km/h (1)	
			13.709(1) 178.412km/h (1)			
2.	204	RADZO	I.kat.benzin do obsahu 3500 ccm	VW Golf	14.174	0.465
			14.313(2) 165.490km/h (2)		14.251(3) 162.114km/h (3)	
			14.174(2) 166.606km/h (2)			
3.	241	CEBE Robert	I.kat.benzin do obsahu 3500 ccm	Subaru Impreza STI	14.223	0.514
			14.369(3) 157.399km/h (4)		14.223(2) 158.529km/h (4)	
			14.682(4) 147.051km/h (7)			
4.	205	BÁRTIČKA Jiří	I.kat.benzin do obsahu 3500 ccm	BMW	14.621	0.912
			14.861(4) 158.494km/h (3)		14.688(4) 165.181km/h (2)	
			14.621(3) 165.075km/h (3)			
5.	206	MĚSÍC	I.kat.benzin do obsahu 3500 ccm	VW Golf 5 GTi	15.167	1.458
			15.423(6) 148.461km/h (7)		15.167(5) 153.972km/h (5)	
			15.533(6) 149.775km/h (5)			
6.	210	TAJBL Michal	I.kat.benzin do obsahu 3500 ccm	Audi A3	15.276	1.567
			15.367(5) 147.595km/h (8)		15.276(6) 150.360km/h (8)	
			15.529(5) 154.063km/h (4)			
7.	207	DRESIK Scuderia Itai	I.kat.benzin do obsahu 3500 ccm	Lancia Delta HF	15.378	1.669
			15.429(7) 151.780km/h (5)		15.378(7) 153.198km/h (6)	
			15.538(7) 147.245km/h (6)			
8.	201	MILIS.19	I.kat.benzin do obsahu 3500 ccm	Mitsubishi Eclips	15.655	1.946
			16.186(8) 148.764km/h (6)		15.655(8) 153.023km/h (7)	
			16.365(9) 141.860km/h (10)			

Poř.	Stč	Jméno	Třída 1. pokus 3. pokus 5. pokus	stroj	Čas 2. pokus 4. pokus 6. pokus	Ztráta
9.	202	ZARDA	I.kat.benzin do obsahu 3500 ccm 18.112(11) 121.376km/h (11) 15.836(8) 146.768km/h (8)	Mitsubishi Eclips	15.836 16.133 (9) 146.643km/h (9)	2.127
10.	208	STRAČENKA	I.kat.benzin do obsahu 3500 ccm 16.762(9) 142.257km/h (9) 16.366(10) 143.253km/h (9)	škoda Octavia	16.326 16.326 (10) 143.414km/h (10)	2.617
11.	209	KOUBA	I.kat.benzin do obsahu 3500 ccm 17.441(10) 132.734km/h (10) 17.244(11) 131.275km/h (11)	WV	17.244 17.443 (11) 131.907km/h (11)	3.535

Přihlášeno 11

Startovalo 11

Klasifikováno 11

I.kat.benzin do obsahu 4000 ccm

Poř.	Stč	Jméno	Třída 1. pokus 3. pokus 5. pokus	stroj	Čas 2. pokus 4. pokus 6. pokus	Ztráta
1.	244	JAKUB	I.kat.benzin do obsahu 4000 ccm 13.698(1) 170.960km/h (2) 13.655(1) 170.652km/h (1)	Nissan 370 Z	13.579 13.579 (1) 165.549km/h (2)	
2.	246	KOUBIČ	I.kat.benzin do obsahu 4000 ccm 13.715(2) 172.213km/h (1) 13.824(2) 165.572km/h (2)	BMW M23	13.715 14.424 (2) 175.959km/h (1)	0.136
3.	243	MUSTAFA	I.kat.benzin do obsahu 4000 ccm 16.254(3) 148.256km/h (3) 15.995(3) 148.766km/h (3)	Ford Mustang	15.763 15.763 (3) 149.143km/h (3)	2.184
4.	245	HEFA	I.kat.benzin do obsahu 4000 ccm 16.632(4) 138.858km/h (4) 16.620(4) 137.704km/h (4)	Ford Probe	16.414 16.414 (4) 137.835km/h (4)	2.835

Přihlášeno 5

Startovalo 4

Klasifikováno 4

I.kat.benzin nad obsah 4000 ccm

Poř.	Stč	Jméno	Třída	stroj	Čas	Ztráta
			1. pokus		2. pokus	
			3. pokus		4. pokus	
			5. pokus		6. pokus	
1.	282	TOM	I.kat.benzin nad obsah 4000 ccm Nissan GTR		10.275	
			10.903(1)	229.493km/h (1)	10.275 (1)	219.528km/h (1)
			10.349(1)	224.789km/h (1)		
2.	285	MÁRA	I.kat.benzin nad obsah 4000 ccm Chevrolet Corvette 6		12.279	2.004
			12.530(2)	189.331km/h (3)	12.279 (2)	197.886km/h (2)
			12.373(2)	189.433km/h (2)		
3.	286	MVOLESKO	I.kat.benzin nad obsah 4000 ccm Porsche 911		12.510	2.235
			12.683(3)	193.829km/h (2)	12.659 (3)	193.861km/h (3)
			12.510(3)	188.343km/h (3)		
4.	284	MAŠEK Jiří	I.kat.benzin nad obsah 4000 ccm Lexus ISF		13.651	3.376
			13.782(4)	168.996km/h (4)	13.651 (4)	170.281km/h (4)
			13.666(4)	176.002km/h (4)		
5.	281	GÜRTUER Jakub	I.kat.benzin nad obsah 4000 ccm Audi R8		13.858	3.583
			15.054(6)	141.620km/h (6)	13.909 (5)	160.946km/h (6)
			13.858(5)	161.759km/h (6)		
6.	283	KIR Milan	I.kat.benzin nad obsah 4000 ccm Audi S6		13.923	3.648
			14.288(5)	165.460km/h (5)	14.310 (6)	165.908km/h (5)
			13.923(6)	169.823km/h (5)		

Přihlášeno 6

Startovalo 6

Klasifikováno 6

I.kat.diesel do obsahu 2000 ccm

Poř.	Stč	Jméno	Třída	stroj	Čas	Ztráta
			1. pokus		2. pokus	
			3. pokus		4. pokus	
			5. pokus		6. pokus	
1.	325	STANO TDi Drápek	I.kat.diesel do obsahu 2000 ccm VW Golf		13.561	
			13.866(2)	164.625km/h (3)	13.736 (1)	161.163km/h (3)
			13.561(1)	161.088km/h (4)		
2.	333	MIRULU	I.kat.diesel do obsahu 2000 ccm Škoda Octavia		13.611	0.050
			13.611(1)	181.138km/h (1)	13.856 (2)	186.417km/h (1)
			13.684(2)	176.921km/h (1)		
3.	322	SAPY	I.kat.diesel do obsahu 2000 ccm VW Golf IV		14.001	0.440
			14.147(3)	160.976km/h (7)	14.001 (3)	160.707km/h (4)
			14.002(3)	162.636km/h (3)		
4.	324	LÁĎA TDi Drápek	I.kat.diesel do obsahu 2000 ccm VW Golf		14.394	0.833
			14.425(4)	161.895km/h (6)	14.394 (4)	155.531km/h (6)
			14.884(5)	143.250km/h (9)		
5.	321	KOBBE	I.kat.diesel do obsahu 2000 ccm Fabia RS		14.466	0.905
			15.511(8)	164.663km/h (2)	14.466 (5)	168.998km/h (2)
			14.674(4)	169.823km/h (2)		
6.	323	MÁCA- TDi Drápek	I.kat.diesel do obsahu 2000 ccm VW Golf		15.005	1.444
			15.005(5)	162.131km/h (5)	15.156 (6)	157.146km/h (5)
			17.469(15)	141.726km/h (10)		

Poř.	Stč	Jméno	Třída	stroj	Čas	Ztráta
			1. pokus		2. pokus	
			3. pokus		4. pokus	
			5. pokus		6. pokus	
7.	327	PROCHY	I.kat.diesel do obsahu 2000 ccmSeat Ibiza		15.145	1.584
			15.145(6)	162.568km/h (4)	15.205 (7)	153.211km/h (7)
			15.718(8)	160.094km/h (5)		
8.	328	ŠUNKA	I.kat.diesel do obsahu 2000 ccmVW Golf II		15.237	1.676
			16.165(10)	139.345km/h (10)	15.498 (8)	150.796km/h (9)
			15.237(6)	156.294km/h (6)		
9.	329	MILI TDi Drápek	I.kat.diesel do obsahu 2000 ccmSeat Leon		15.457	1.896
			15.457(7)	146.573km/h (9)	15.534 (9)	152.464km/h (8)
			15.567(7)	151.737km/h (7)		
10.	334	VARGY	I.kat.diesel do obsahu 2000 ccmSeat Leon		15.831	2.270
			15.948(9)	147.057km/h (8)	15.831 (10)	149.857km/h (10)
			16.015(9)	147.332km/h (8)		
11.	326	GROF Marek	I.kat.diesel do obsahu 2000 ccmVW Golf IV		16.537	2.976
			16.671(11)	132.740km/h (12)	16.590 (11)	139.876km/h (11)
			16.537(10)	134.563km/h (13)		
12.	335	E30	I.kat.diesel do obsahu 2000 ccmBMW E46 320D		16.754	3.193
			16.754(12)	131.975km/h (13)	16.768 (12)	136.777km/h (12)
			16.895(11)	135.330km/h (12)		
13.	332	HUDEC Zdeněk	I.kat.diesel do obsahu 2000 ccmŠkoda Octavia		16.929	3.368
			17.194(13)	133.403km/h (11)	16.929 (13)	136.100km/h (13)
			17.022(12)	136.159km/h (11)		
14.	331	ČUDLA	I.kat.diesel do obsahu 2000 ccmŠkoda Octavia		17.044	3.483
			17.396(14)	130.124km/h (14)	17.044 (14)	132.349km/h (14)
			17.130(13)	131.854km/h (15)		
15.	330	FLOP	I.kat.diesel do obsahu 2000 ccmŠkoda Octvia II		17.443	3.882
			17.898(15)	129.961km/h (15)	17.780 (15)	130.486km/h (15)
			17.443(14)	134.506km/h (14)		

Přihlášeno 16
 Startovalo 15
 Klasifikováno 15

I.kat.diesel do obsahu 2500 ccm

Poř.	Stč	Jméno	Třída	stroj	Čas	Ztráta
			1. pokus		2. pokus	
			3. pokus		4. pokus	
			5. pokus		6. pokus	
1.	362	RADEK156	I.kat.diesel do obsahu 2500 ccmAlfa Romeo		14.660	
			14.757(1)	166.770km/h (1)	16.219 (1)	142.653km/h (1)
			14.660(1)	161.407km/h (1)		
2.	361	KRISTE	I.kat.diesel do obsahu 2500 ccmBMW		16.364	1.704
			16.604(2)	141.148km/h (2)	16.364 (2)	136.304km/h (2)
			16.731(2)	136.586km/h (2)		

Přihlášeno 3
 Startovalo 2
 Klasifikováno 2

I.kat.diesel do obsahu 3000 ccm

Poř.	Stč	Jméno	Třída		stroj	Čas		Ztráta
			1. pokus	3. pokus		2. pokus	4. pokus	
1.	403	OŠKRDA Dušan	<i>I.kat.diesel do obsahu 3000 ccm</i>		BMW 330xd	13.189		
			13.241 (1)	169.174km/h (2)		13.189 (1)	173.986km/h (2)	
			13.243 (1)	174.336km/h (1)				
2.	409	LUCASO	<i>I.kat.diesel do obsahu 3000 ccm</i>		BMW	13.353		0.164
			13.353 (2)	176.643km/h (1)		13.486 (2)	177.069km/h (1)	
			13.572 (3)	171.112km/h (3)				
3.	407	ŠKUBY	<i>I.kat.diesel do obsahu 3000 ccm</i>		BMW	13.515		0.326
			13.638 (3)	164.806km/h (4)		13.515 (3)	172.504km/h (3)	
			13.554 (2)	173.283km/h (2)				
4.	406	LUŘA 330D	<i>I.kat.diesel do obsahu 3000 ccm</i>		BMW 330D	13.738		0.549
			13.901 (5)	165.046km/h (3)		21.921 (11)	118.537km/h (11)	
			13.738 (4)	166.155km/h (5)				
5.	404	INDI TDi garage	<i>I.kat.diesel do obsahu 3000 ccm</i>		Audi A40 30TDi	13.742		0.553
			13.742 (4)	162.730km/h (5)		13.826 (4)	161.797km/h (4)	
			14.151 (7)	166.753km/h (4)				
6.	402	SURMIK Křištof	<i>I.kat.diesel do obsahu 3000 ccm</i>		Audi A5	13.901		0.712
			14.839 (9)	155.251km/h (9)		13.917 (6)	161.402km/h (5)	
			13.901 (5)	161.792km/h (6)				
7.	411	DANDY	<i>I.kat.diesel do obsahu 3000 ccm</i>		Audi A5	13.906		0.717
			14.136 (6)	159.973km/h (7)		13.906 (5)	160.920km/h (6)	
			14.041 (6)	160.254km/h (7)				
8.	410	ROUD Ondřej	<i>I.kat.diesel do obsahu 3000 ccm</i>		BMW 330XD	14.524		1.335
			14.579 (8)	152.305km/h (10)		14.529 (7)	156.474km/h (9)	
			14.524 (8)	156.640km/h (9)				
9.	401	KAPITÁN Šnek	<i>I.kat.diesel do obsahu 3000 ccm</i>		BMW 535d	14.532		1.343
			14.532 (7)	160.755km/h (6)		14.670 (8)	159.620km/h (7)	
			15.002 (10)	159.110km/h (8)				
10.	408	ŠTRACH Martin	<i>I.kat.diesel do obsahu 3000 ccm</i>		BMW 535D	14.712		1.523
			14.912 (10)	158.730km/h (8)		18.031 (10)	157.483km/h (8)	
			14.712 (9)	156.615km/h (10)				
11.	405	ROUBIC	<i>I.kat.diesel do obsahu 3000 ccm</i>		Audi A6	14.802		1.613
			15.044 (11)	152.134km/h (11)		14.802 (9)	147.598km/h (10)	
			15.034 (11)	152.871km/h (11)				

Přihlášeno 11

Startovalo 11

Klasifikováno 11

II.kat.benzin do 2000 ccm

Poř.	Stč	Jméno	Třída	stroj	Čas	Ztráta
			1. pokus		2. pokus	
			3. pokus		4. pokus	
			5. pokus		6. pokus	
1.	485	ZIZIVZI	II.kat.benzin do 2000 ccm 13.892(1) 171.624km/h (1) 13.487(1) 170.174km/h (1)	Honda Civic	13.487 13.668(1) 172.535km/h (1)	
2.	484	ĎUBY	II.kat.benzin do 2000 ccm 16.068(2) 140.861km/h (2) 15.885(2) 145.088km/h (2)	Honda CRX	15.885 16.096(2) 142.472km/h (2)	2.398
3.	487	PUSTIL Harakiri	II.kat.benzin do 2000 ccm 18.120(5) 121.406km/h (5) 16.862(3) 136.899km/h (3)	Mazda 323F	16.862 17.395(5) 131.434km/h (3)	3.375
4.	481	VAVRUŠKA Jiří	II.kat.benzin do 2000 ccm 17.362(4) 127.349km/h (4) 16.920(4) 124.455km/h (6)	Škoda Favorit	16.920 17.282(4) 123.994km/h (6)	3.433
5.	488	KRÁLÍK	II.kat.benzin do 2000 ccm 17.130(3) 128.222km/h (3) 17.032(5) 129.182km/h (4)	Mazda 323 F BG	17.032 17.072(3) 128.919km/h (4)	3.545
6.	486	MARTY	II.kat.benzin do 2000 ccm 18.249(6) 120.635km/h (6) 17.458(6) 127.135km/h (5)	Škoda	17.458 17.522(6) 126.068km/h (5)	3.971
7.	482	JOHN	II.kat.benzin do 2000 ccm 18.663(7) 118.098km/h (7) 18.310(7) 119.631km/h (7)	Škoda Fabia	18.264 18.264(7) 122.638km/h (7)	4.777
8.	483	JÍČKA	II.kat.benzin do 2000 ccm 19.135(8) 115.248km/h (8) 18.938(8) 116.209km/h (8)	Škoda Fabia	18.938 20.016(8) 107.525km/h (8)	5.451

Přihlášeno 8
Startovalo 8
Klasifikováno 8

II.kat.benzin nad 2000 ccm

Poř.	Stč	Jméno	Třída	stroj	Čas	Ztráta
			1. pokus		2. pokus	
			3. pokus		4. pokus	
			5. pokus		6. pokus	
1.	527	BOHUSLÁVEK Václav	II.kat.benzin nad 2000 ccm 11.597(1) 210.397km/h (1) 11.884(1) 203.513km/h (1)	Shelby Cobra 427	11.597 11.813(1) 210.185km/h (1)	
2.	529	HUJER	II.kat.benzin nad 2000 ccm 12.217(2) 193.587km/h (2) 12.375(2) 185.380km/h (4)	Pontiac	12.217 12.879(2) 183.610km/h (2)	0.620
3.	536	MIKI Louda	II.kat.benzin nad 2000 ccm 12.729(3) 188.141km/h (3) 12.540(3) 189.560km/h (2)	BMW 335i	12.540 16.490(18) 92.995km/h (19)	0.943
4.	524	KRUML Petr	II.kat.benzin nad 2000 ccm 13.256(4) 177.372km/h (6) 13.225(4) 176.630km/h (6)	Cobra	12.961 12.961(3) 178.056km/h (4)	1.364

Poř.	Stč	Jméno	Třída 1. pokus 3. pokus 5. pokus	stroj	Čas 2. pokus 4. pokus 6. pokus	Ztráta
5.	247	FRU FRU	II.kat.benzin nad 2000 ccm 13.362(5) 185.842km/h (4) 13.328(5) 183.614km/h (5)	Toyota Supra	13.328 13.973(7) 175.212km/h (5)	1.731
6.	523	DVOŘÁK Josef	II.kat.benzin nad 2000 ccm 13.424(6) 176.756km/h (7) 13.368(6) 171.171km/h (7)	Fiat Coupé	13.368 13.477(4) 170.711km/h (6)	1.771
7.	525	WERTTHEIM Honza	II.kat.benzin nad 2000 ccm 13.473(7) 185.228km/h (5) 13.427(7) 186.029km/h (3)	Ford GT 40	13.427 13.990(8) 182.218km/h (3)	1.830
8.	521	TOULA Jiří	II.kat.benzin nad 2000 ccm 13.491(8) 173.274km/h (8) 14.328(10) 158.035km/h (8)	Brouk	13.491 15.000(12) 109.258km/h (18)	1.894
9.	526	GULF	II.kat.benzin nad 2000 ccm 13.894(9) 169.129km/h (9)	AC Cobra 427 SC	13.521 13.521(5) 167.568km/h (7)	1.924
10.	534	KOPEC Harakiri	II.kat.benzin nad 2000 ccm 14.123(10) 153.398km/h (12) 14.205(8) 157.682km/h (9)	Subaru Impreza	13.754 13.754(6) 156.178km/h (10)	2.157
11.	532	BRUTILA	II.kat.benzin nad 2000 ccm 14.142(11) 156.705km/h (11) 14.247(9) 157.632km/h (10)	Honda Civic	14.011 14.011(9) 156.724km/h (9)	2.414
12.	537	TIFANY	II.kat.benzin nad 2000 ccm 14.777(12) 149.742km/h (14) 14.727(11) 154.963km/h (11)	Škoda Octavia	14.622 14.622(10) 154.880km/h (11)	3.025
13.	522	WARHOL	II.kat.benzin nad 2000 ccm 15.310(14) 153.046km/h (13) 15.480(15) 147.918km/h (15)	Fiat Coupe	14.978 14.978(11) 160.892km/h (8)	3.381
14.	530	MATTY	II.kat.benzin nad 2000 ccm 15.288(13) 148.201km/h (17) 14.983(12) 149.388km/h (14)	Škoda Fabia	14.983 15.057(13) 148.111km/h (14)	3.386
15.	533	MORYMOTO	II.kat.benzin nad 2000 ccm 15.526(16) 146.603km/h (18) 15.182(13) 154.192km/h (12)	BMW E30	15.182 15.229(14) 147.839km/h (15)	3.585
16.	528	PACOŠ	II.kat.benzin nad 2000 ccm 17.604(18) 148.568km/h (16) 15.225(14) 151.764km/h (13)	Sebrin	15.225 15.645(16) 151.317km/h (12)	3.628
17.	535	ABELES	II.kat.benzin nad 2000 ccm 15.422(15) 158.852km/h (10) 17.520(17) 135.549km/h (17)	Seat Ibiza	15.422 15.960(17) 144.439km/h (16)	3.825
18.	531	VW Golf II	II.kat.benzin nad 2000 ccm 15.617(17) 149.091km/h (15) 15.901(16) 145.000km/h (16)	VW Golf II	15.617 15.638(15) 149.730km/h (13)	4.020
19.	44	ANDRLE Lukáš	II.kat.benzin nad 2000 ccm 13:39:21(19) 121.259km/h (19) 18.092(18) 124.296km/h (18)	BMW	18.092 19.029(19) 116.426km/h (17)	6.495

Přihlášeno 19
Startovalo 19
Klasifikováno 19

II.kat.Diesel do 2000 ccm

Poř.	Stč	Jméno	Třída	stroj	Čas	Ztráta
			1. pokus		2. pokus	
			3. pokus		4. pokus	
			5. pokus		6. pokus	
1.	562	FRIC Michal	II.kat.Diesel do 2000 ccm	VW Golf II	13.244	
			13.822(1) 170.934km/h (1)		13.563(1) 167.947km/h (1)	
			13.244(1) 175.603km/h (1)			
2.	561	JIRKA-1	II.kat.Diesel do 2000 ccm	BMW 125d	14.338	1.094
			14.338(2) 158.546km/h (2)		14.837(2) 150.626km/h (2)	
			15.234(2) 149.537km/h (3)			
3.	563	VENCA	II.kat.Diesel do 2000 ccm	Škoda Felicia	15.296	2.052
			15.809(4) 149.959km/h (3)		15.296(3) 149.556km/h (4)	
			16.965(4) 137.830km/h (4)			
4.	564	REGITKO Roman	II.kat.Diesel do 2000 ccm	VW Golf	15.404	2.160
			15.631(3) 147.246km/h (4)		15.487(4) 149.770km/h (3)	
			15.404(3) 150.405km/h (2)			

Přihlášeno 4

Startovalo 4

Klasifikováno 4

Kategorie I - cestovní vozy

Poř.	Stč	Jméno	Třída	stroj	Čas	Ztráta
			1. pokus		2. pokus	
			3. pokus		4. pokus	
			5. pokus		6. pokus	
1.	282	TOM	I.kat.benzin nad obsah 4000 ccm	Nissan GTR	10.275	
			10.903(1) 229.493km/h (1)		10.275(1) 219.528km/h (1)	
			10.349(1) 224.789km/h (1)			
2.	285	MÁRA	I.kat.benzin nad obsah 4000 ccm	Chevrolet Corvette 6	12.279	2.004
			12.530(2) 189.531km/h (3)		12.279(2) 197.886km/h (2)	
			12.373(2) 189.433km/h (2)			
3.	286	MVOLESKO profituning	I.kat.benzin nad obsah 4000 ccm	Porsche 911	12.510	2.235
			12.683(3) 193.829km/h (2)		12.659(3) 193.861km/h (3)	
			12.510(3) 188.343km/h (3)			
4.	403	OŠKRDA Dušan	I.kat.diesel do obsahu 3000 ccm	BMW 330xd	13.189	2.914
			13.241(1) 169.174km/h (2)		13.189(1) 173.986km/h (2)	
			13.243(1) 174.336km/h (1)			
5.	409	LUCASO	I.kat.diesel do obsahu 3000 ccm	BMW	13.353	3.078
			13.353(2) 176.643km/h (1)		13.486(2) 177.069km/h (1)	
			13.572(3) 171.112km/h (3)			
6.	407	ŠKUBY	I.kat.diesel do obsahu 3000 ccm	BMW	13.515	3.240
			13.638(3) 164.806km/h (4)		13.515(3) 172.504km/h (3)	
			13.554(2) 173.283km/h (2)			
7.	325	STANO TDi Drápek	I.kat.diesel do obsahu 2000 ccm	VW Golf	13.561	3.286
			13.866(2) 164.625km/h (3)		13.736(1) 161.163km/h (3)	
			13.561(1) 161.088km/h (4)			
8.	244	JAKUB	I.kat.benzin do obsahu 4000 ccm	Nissan 370 Z	13.579	3.304
			13.698(1) 170.960km/h (2)		13.579(1) 165.549km/h (2)	
			13.655(1) 170.652km/h (1)			

Poř.	Stč	Jméno	Třída	stroj	Čas	Ztráta
			1. pokus		2. pokus	
			3. pokus		4. pokus	
			5. pokus		6. pokus	
9.	333	MIRULU	I.kat.diesel do obsahu 2000 ccm	Škoda Octavia	13.611	3.336
			13.611 (1) 181.138km/h (1)	13.856 (2) 186.417km/h (1)		
			13.684 (2) 176.921km/h (1)			
10.	284	MAŠEK Jiří	I.kat.benzin nad obsah 4000 ccm	Lexus ISF	13.651	3.376
			13.782 (4) 168.996km/h (4)	13.651 (4) 170.281km/h (4)		
			13.666 (4) 176.002km/h (4)			
11.	203	PETR Ryčavý	I.kat.benzin do obsahu 3500 ccm	Fiat Coupe	13.709	3.434
			13.931 (1) 178.396km/h (1)	13.744 (1) 177.843km/h (1)		
			13.709 (1) 178.412km/h (1)			
12.	246	KOUBIČ	I.kat.benzin do obsahu 4000 ccm	BMW M23	13.715	3.440
			13.715 (2) 172.213km/h (1)	14.424 (2) 175.959km/h (1)		
			13.824 (2) 165.572km/h (2)			
13.	406	LUŽA 330D	I.kat.diesel do obsahu 3000 ccm	BMW 330D	13.738	3.463
			13.901 (5) 165.046km/h (3)	21.921 (11) 118.537km/h (11)		
			13.738 (4) 166.155km/h (5)			
14.	404	INDI TDi garage	I.kat.diesel do obsahu 3000 ccm	Audi A40 30TDi	13.742	3.467
			13.742 (4) 162.730km/h (5)	13.826 (4) 161.797km/h (4)		
			14.151 (7) 166.753km/h (4)			
15.	167	PRCEK	I.kat.benzin do obsahu 3000 ccm	BMW M3	13.836	3.561
			14.110 (1) 166.019km/h (1)	13.836 (1) 162.154km/h (2)		
			13.935 (1) 161.480km/h (1)			
16.	281	GÜRTUER Jakub	I.kat.benzin nad obsah 4000 ccm	Audi R8	13.858	3.583
			15.054 (6) 141.620km/h (6)	13.909 (5) 160.946km/h (6)		
			13.858 (5) 161.759km/h (6)			
17.	402	SURMIK Krištof	I.kat.diesel do obsahu 3000 ccm	Audi A5	13.901	3.626
			14.839 (9) 155.251km/h (9)	13.917 (6) 161.402km/h (5)		
			13.901 (5) 161.792km/h (6)			
18.	411	DANDY	I.kat.diesel do obsahu 3000 ccm	Audi A5	13.906	3.631
			14.136 (6) 159.973km/h (7)	13.906 (5) 160.920km/h (6)		
			14.041 (6) 160.254km/h (7)			
19.	283	KIR Milan	I.kat.benzin nad obsah 4000 ccm	Audi S6	13.923	3.648
			14.288 (5) 165.460km/h (5)	14.310 (6) 165.908km/h (5)		
			13.923 (6) 169.823km/h (5)			
20.	322	SAPY	I.kat.diesel do obsahu 2000 ccm	VW Golf IV	14.001	3.726
			14.147 (3) 160.976km/h (7)	14.001 (3) 160.707km/h (4)		
			14.002 (3) 162.636km/h (3)			
21.	81	TRANOVÁ Irena	I.kat.benzin do obsahu 2000 ccm	Lotus Elise	14.079	3.804
			14.108 (1) 161.337km/h (1)	14.079 (1) 156.884km/h (2)		
			14.232 (1) 159.905km/h (1)			
22.	204	RADZO	I.kat.benzin do obsahu 3500 ccm	VW Golf	14.174	3.899
			14.313 (2) 165.490km/h (2)	14.251 (3) 162.114km/h (3)		
			14.174 (2) 166.606km/h (2)			
23.	241	CEBE Robert	I.kat.benzin do obsahu 3500 ccm	Subaru Impreza STI	14.223	3.948
			14.369 (3) 157.399km/h (4)	14.223 (2) 158.529km/h (4)		
			14.682 (4) 147.051km/h (7)			
24.	85	PARY	I.kat.benzin do obsahu 2000 ccm	Nissan Sunny	14.249	3.974
			14.429 (2) 154.032km/h (2)	14.304 (2) 160.188km/h (1)		
			14.249 (2) 154.342km/h (2)			

Poř.	Stč	Jméno	Třída	stroj	Čas	Ztráta
			1. pokus		2. pokus	
			3. pokus		4. pokus	
			5. pokus		6. pokus	
25.	162	SEMIR	I.kat.benzin do obsahu 3000 ccm	BMW M3	14.288	4.013
			14.526(2) 153.550km/h (3)	14.288(2) 163.882km/h (1)		
			14.341(2) 159.834km/h (2)			
26.	43	MÍŠAN	I.kat.benzin do obsahu 1600 ccm	Honda Civic	14.320	4.045
			14.732(1) 159.202km/h (1)	14.367(1) 160.902km/h (1)		
			14.320(1) 161.755km/h (1)			
27.	130	ROBERT-RX	I.kat.benzin do obsahu 2500 ccm	Honda Prelude	14.386	4.111
			15.412(2) 155.396km/h (2)	14.697(1) 152.129km/h (2)		
			14.386(1) 153.219km/h (2)			
28.	324	LÁĎA TDi Drápek	I.kat.diesel do obsahu 2000 ccm	VW Golf	14.394	4.119
			14.425(4) 161.895km/h (6)	14.394(4) 155.531km/h (6)		
			14.884(5) 143.250km/h (9)			
29.	321	KOBBE	I.kat.diesel do obsahu 2000 ccm	Fabia RS	14.466	4.191
			15.511(8) 164.663km/h (2)	14.466(5) 168.998km/h (2)		
			14.674(4) 169.823km/h (2)			
30.	410	ROUD Ondřej	I.kat.diesel do obsahu 3000 ccm	BMW 330XD	14.524	4.249
			14.579(8) 152.305km/h (10)	14.529(7) 156.474km/h (9)		
			14.524(8) 156.640km/h (9)			
31.	401	KAPITÁN Šnek	I.kat.diesel do obsahu 3000 ccm	BMW 535d	14.532	4.257
			14.532(7) 160.755km/h (6)	14.670(8) 159.620km/h (7)		
			15.002(10) 159.110km/h (8)			
32.	205	BÁRTIČKA Jiří	I.kat.benzin do obsahu 3500 ccm	BMW	14.621	4.346
			14.861(4) 158.494km/h (3)	14.688(4) 165.181km/h (2)		
			14.621(3) 165.075km/h (3)			
33.	362	RADEK156	I.kat.diesel do obsahu 2500 ccm	Alfa Romeo	14.660	4.385
			14.757(1) 166.770km/h (1)	16.219(1) 142.653km/h (1)		
			14.660(1) 161.407km/h (1)			
34.	408	ŠTRACH Martin	I.kat.diesel do obsahu 3000 ccm	BMW 535D	14.712	4.437
			14.912(10) 158.730km/h (8)	18.031(10) 157.483km/h (8)		
			14.712(9) 156.615km/h (10)			
35.	48	DAVID VTi	I.kat.benzin do obsahu 1600 ccm	Honda Civic	14.769	4.494
			14.936(2) 148.729km/h (3)	14.865(2) 146.636km/h (4)		
			14.769(2) 152.298km/h (2)			
36.	84	MATOUŠ Jindřich	I.kat.benzin do obsahu 2000 ccm	Opel Kadet GTi	14.775	4.500
			14.881(3) 149.804km/h (3)	16.614(6) 107.494km/h (8)		
			14.775(3) 149.343km/h (3)			
37.	131	ZAHÁLKA Václav	I.kat.benzin do obsahu 2500 ccm	Fiat Uno	14.780	4.505
			15.072(1) 158.054km/h (1)	14.843(2) 160.452km/h (1)		
			14.780(2) 162.811km/h (1)			
38.	405	ROUBIC	I.kat.diesel do obsahu 3000 ccm	Audi A6	14.802	4.527
			15.044(11) 152.134km/h (11)	14.802(9) 147.598km/h (10)		
			15.034(11) 152.871km/h (11)			
39.	47	PETKA	I.kat.benzin do obsahu 1600 ccm	Honda CRX	14.836	4.561
			15.094(3) 153.948km/h (2)	14.905(3) 153.631km/h (2)		
			14.836(3) 151.562km/h (3)			
40.	323	MÁČA- TDi Drápek	I.kat.diesel do obsahu 2000 ccm	VW Golf	15.005	4.730
			15.005(5) 162.131km/h (5)	15.156(6) 157.146km/h (5)		
			17.469(15) 141.726km/h (10)			

Poř.	Stč	Jméno	Třída 1. pokus 3. pokus 5. pokus	stroj	Čas 2. pokus 4. pokus 6. pokus	Ztráta
41.	163	HORÁK Jan	I.kat.benzin do obsahu 3000 ccm 15.313(3) 142.825km/h (7) 15.162(4) 144.842km/h (5)	Opel Kadet 2.0	15.084 15.084 (3) 143.823km/h (5)	4.809
42.	164	SKŘIVÁNEK Tomáš	I.kat.benzin do obsahu 3000 ccm 15.373(4) 154.855km/h (2) 15.091(3) 157.787km/h (3)	BMW 330i	15.091 15.204 (4) 155.038km/h (3)	4.816
43.	327	PROCHY	I.kat.diesel do obsahu 2000 ccm 15.145(6) 162.568km/h (4) 15.718(8) 160.094km/h (5)	Seat Ibiza	15.145 15.205 (7) 153.211km/h (7)	4.870
44.	206	MĚSÍC	I.kat.benzin do obsahu 3500 ccm 15.423(6) 148.461km/h (7) 15.533(6) 149.775km/h (5)	VW Golf 5 GTi	15.167 15.167 (5) 153.972km/h (5)	4.892
45.	4	DREXLER Tomáš	I.kat.benzin obsahu 1400 ccm 15.502(7) 143.866km/h (1) 15.460(7) 138.106km/h (1)	Škoda Favorit	15.173 15.173 (1) 145.338km/h (1)	4.898
46.	45	LUKÁŠ	I.kat.benzin do obsahu 1600 ccm 15.438(5) 144.675km/h (4) 15.215(4) 146.347km/h (4)	Honda CRX	15.215 15.338 (4) 145.453km/h (5)	4.940
47.	328	ŠUNKA	I.kat.diesel do obsahu 2000 ccm 16.165(10) 139.345km/h (10) 15.237(6) 156.294km/h (6)	VW Golf II	15.237 15.498 (8) 150.796km/h (9)	4.962
48.	210	TAJBL Michal	I.kat.benzin do obsahu 3500 ccm 15.367(5) 147.595km/h (8) 15.529(5) 154.063km/h (4)	Audi A3	15.276 15.276 (6) 150.360km/h (8)	5.001
49.	207	DRESIK Scuderia Itai	I.kat.benzin do obsahu 3500 ccm 15.429(7) 151.780km/h (5) 15.538(7) 147.245km/h (6)	Lancia Delta HF	15.378 15.378 (7) 153.198km/h (6)	5.103
50.	41	LUKÁŠ Zeman	I.kat.benzin do obsahu 1600 ccm 15.421(4) 143.830km/h (5) 15.609(5) 143.978km/h (7)	Honda Civic VTi	15.421 15.633 (6) 144.112km/h (6)	5.146
51.	329	MILI TDi Drápek	I.kat.diesel do obsahu 2000 ccm 15.457(7) 146.573km/h (9) 15.567(7) 151.737km/h (7)	Seat Leon	15.457 15.534 (9) 152.464km/h (8)	5.182
52.	49	FÍLA	I.kat.benzin do obsahu 1600 ccm 16.163(7) 140.593km/h (7) 15.666(7) 144.588km/h (5)	Honad Civic	15.500 15.500 (5) 150.009km/h (3)	5.225
53.	166	OLAN	I.kat.benzin do obsahu 3000 ccm 16.113(6) 130.422km/h (9) 15.610(5) 142.430km/h (8)	BMW	15.557 15.557 (5) 143.237km/h (6)	5.282
54.	42	ŠVÁB	I.kat.benzin do obsahu 1600 ccm 16.976(8) 124.762km/h (9) 15.627(6) 144.310km/h (6)	Honda CRX	15.627 15.780 (8) 143.494km/h (7)	5.352
55.	201	MILIS.19	I.kat.benzin do obsahu 3500 ccm 16.186(8) 148.764km/h (6) 16.365(9) 141.860km/h (10)	Mitsubischi Eclips	15.655 15.655 (8) 153.023km/h (7)	5.380
56.	82	HRABĚ Martin	I.kat.benzin do obsahu 2000 ccm 15.837(4) 146.469km/h (4) 16.373(4) 139.909km/h (5)	Mitsubischi Eclips	15.693 15.693 (3) 151.235km/h (3)	5.418

Poř.	Stč	Jméno	Třída		stroj	Čas		Ztráta
			1. pokus	3. pokus		2. pokus	4. pokus	
57.	50	PATYS	I.kat.benzin do obsahu 1600 ccm		Honda CRX	15.720		5.445
			15.799 (6)	142.865km/h (6)		15.778 (7)	142.171km/h (8)	
			15.720 (8)	142.376km/h (8)				
58.	161	POSPI	I.kat.benzin do obsahu 3000 ccm		BMW E46 328i	15.724		5.449
			16.442 (8)	144.386km/h (5)		16.132 (7)	143.230km/h (7)	
			15.724 (6)	145.936km/h (4)				
59.	243	MUSTAFA	I.kat.benzin do obsahu 4000 ccm		Ford Mustang	15.763		5.488
			16.254 (3)	148.256km/h (3)		15.763 (3)	149.143km/h (3)	
			15.995 (3)	148.766km/h (3)				
60.	169	MARCEL Brožek	I.kat.benzin do obsahu 3000 ccm		BMW E46 330ci	15.798		5.523
			16.112 (5)	144.666km/h (4)		15.798 (6)	141.891km/h (9)	
			15.934 (7)	143.433km/h (7)				
61.	334	VARGY	I.kat.diesel do obsahu 2000 ccm		Seat Leon	15.831		5.556
			15.948 (9)	147.057km/h (8)		15.831 (10)	149.857km/h (10)	
			16.015 (9)	147.332km/h (8)				
62.	202	ZARDA	I.kat.benzin do obsahu 3500 ccm		Mitsubishi Eclips	15.836		5.561
			18.112 (11)	121.376km/h (11)		16.133 (9)	146.643km/h (9)	
			15.836 (8)	146.768km/h (8)				
63.	123	WOLFRAM Vladimír	I.kat.benzin do obsahu 2500 ccm		Fiat Punto GT	15.859		5.584
			15.885 (3)	143.655km/h (4)		15.859 (3)	144.246km/h (4)	
			16.354 (6)	137.633km/h (7)				
64.	3	POVÝŠIL Lukáš	I.kat.benzin obsahu 1400 ccm		Citroen Saxo	15.956		5.681
			16.056 (2)	136.318km/h (3)		15.956 (2)	137.801km/h (2)	
			16.018 (2)	133.705km/h (3)				
65.	124	JIRKA VTi	I.kat.benzin do obsahu 2500 ccm		Honda Prelude 4G	16.072		5.797
			16.142 (4)	146.748km/h (3)		16.072 (4)	145.553km/h (3)	
			16.276 (4)	143.907km/h (3)				
66.	165	BERY	I.kat.benzin do obsahu 3000 ccm		Opel Omega	16.122		5.847
			16.723 (9)	134.673km/h (8)		16.403 (9)	144.822km/h (4)	
			16.122 (8)	140.959km/h (9)				
67.	168	BELLE Tomáš	I.kat.benzin do obsahu 3000 ccm		Peugeot 406	16.196		5.921
			16.277 (7)	143.023km/h (6)		16.368 (8)	142.386km/h (8)	
			16.196 (9)	143.942km/h (6)				
68.	125	KASKI	I.kat.benzin do obsahu 2500 ccm		BMW	16.232		5.957
			16.391 (5)	136.599km/h (7)		16.581 (8)	136.571km/h (7)	
			16.232 (3)	137.401km/h (8)				
69.	133	PAJANROSS	I.kat.benzin do obsahu 2500 ccm		Hond Accord RR	16.281		6.006
			16.398 (6)	142.774km/h (5)		16.405 (5)	142.196km/h (5)	
			16.281 (5)	137.941km/h (6)				
70.	208	STRAČENKA	I.kat.benzin do obsahu 3500 ccm		škoda Octavia	16.326		6.051
			16.762 (9)	142.257km/h (9)		16.326 (10)	143.414km/h (10)	
			16.366 (10)	143.253km/h (9)				
71.	86	PAVEL Scuderia ItalM	I.kat.benzin do obsahu 2000 ccm		Alfa Romeo 147	16.342		6.067
			16.533 (5)	136.234km/h (5)		16.342 (4)	141.746km/h (4)	
			16.417 (5)	136.385km/h (6)				
72.	46	BAKY	I.kat.benzin do obsahu 1600 ccm		Honda CRX	16.353		6.078
			17.207 (9)	140.204km/h (8)		16.353 (9)	142.007km/h (9)	
			16.413 (9)	129.069km/h (9)				

Poř.	Stč	Jméno	Třída	stroj	Čas	Ztráta
			1. pokus		2. pokus	
			3. pokus		4. pokus	
			5. pokus		6. pokus	
73.	361	KRISTE	I.kat.diesel do obsahu 2500 ccm	BMW	16.364	6.089
			16.604 (2) 141.148km/h (2)	16.364 (2) 136.304km/h (2)		
			16.731 (2) 136.586km/h (2)			
74.	245	HEFA	I.kat.benzin do obsahu 4000 ccm	Ford Probe	16.414	6.139
			16.632 (4) 138.858km/h (4)	16.414 (4) 137.835km/h (4)		
			16.620 (4) 137.704km/h (4)			
75.	88	ŽŮREK David	I.kat.benzin do obsahu 2000 ccm	Peugeot 206 S16	16.496	6.221
			16.943 (6) 133.763km/h (6)	16.577 (5) 137.470km/h (5)		
			16.496 (6) 141.205km/h (4)			
76.	126	TOCI	I.kat.benzin do obsahu 2500 ccm	BMW	16.498	6.223
			16.498 (7) 134.849km/h (9)	16.551 (7) 134.854km/h (10)		
			16.580 (8) 135.223km/h (10)			
77.	129	LUKY	I.kat.benzin do obsahu 2500 ccm	Ford Probe	16.527	6.252
			16.574 (8) 135.133km/h (8)	16.527 (6) 135.324km/h (8)		
			16.671 (9) 134.209km/h (11)			
78.	326	GROF Marek	I.kat.diesel do obsahu 2000 ccm	VW Golf IV	16.537	6.262
			16.671 (11) 132.740km/h (12)	16.590 (11) 139.876km/h (11)		
			16.537 (10) 134.563km/h (13)			
79.	132	RICHINA	I.kat.benzin do obsahu 2500 ccm	BMW E36 325i	16.557	6.282
			17.471 (11) 131.106km/h (12)	16.744 (11) 129.583km/h (12)		
			16.557 (7) 135.366km/h (9)			
80.	2	LAFY	I.kat.benzin obsahu 1400 ccm	Honda Civic	16.588	6.313
			16.588 (3) 133.812km/h (4)	16.688 (4) 129.708km/h (5)		
			16.726 (3) 129.767km/h (4)			
81.	6	PUNKERKA 89	I.kat.benzin obsahu 1400 ccm	Honda Civic	16.610	6.335
			16.610 (4) 138.955km/h (2)	16.621 (3) 131.342km/h (4)		
			16.815 (5) 134.078km/h (2)			
82.	121	WURA Lukáš	I.kat.benzin do obsahu 2500 ccm	Alfa Romeo 156	16.655	6.380
			16.778 (9) 140.203km/h (6)	16.655 (9) 139.861km/h (6)		
			17.187 (11) 127.970km/h (12)			
83.	127	LHOTY	I.kat.benzin do obsahu 2500 ccm	BMW	16.675	6.400
			16.974 (10) 133.806km/h (10)	16.683 (10) 135.127km/h (9)		
			16.675 (10) 140.548km/h (4)			
84.	335	E30	I.kat.diesel do obsahu 2000 ccm	BMW E46 320D	16.754	6.479
			16.754 (12) 131.975km/h (13)	16.768 (12) 138.777km/h (12)		
			16.895 (11) 135.330km/h (12)			
85.	5	GOLFI	I.kat.benzin obsahu 1400 ccm	Honda Civic	16.806	6.531
			17.141 (5) 127.734km/h (6)	16.944 (5) 132.156km/h (3)		
			16.806 (4) 129.332km/h (5)			
86.	332	HUDEC Zdeněk	I.kat.diesel do obsahu 2000 ccm	Škoda Octavia	16.929	6.654
			17.194 (13) 133.403km/h (11)	16.929 (13) 136.100km/h (13)		
			17.022 (12) 136.159km/h (11)			
87.	331	ČUDLA	I.kat.diesel do obsahu 2000 ccm	Škoda Octavia	17.044	6.769
			17.396 (14) 130.124km/h (14)	17.044 (14) 132.349km/h (14)		
			17.130 (13) 131.854km/h (15)			
88.	209	KOUBA	I.kat.benzin do obsahu 3500 ccm	W	17.244	6.969
			17.441 (10) 132.734km/h (10)	17.443 (11) 131.907km/h (11)		
			17.244 (11) 131.275km/h (11)			

Poř.	Stč	Jméno	Třída	stroj	Čas	Ztráta
			1. pokus 3. pokus 5. pokus			
89.	128	LUKAASSSS	I.kat.benzin do obsahu 2500 ccm	Opel Astra	17.262 17.262 (12) 133.831km/h (11) 17.532(12) 132.412km/h (11) 17.472(12) 139.417km/h (5)	6.987
90.	1	TOMEK	I.kat.benzin obsahu 1400 ccm	Hondn Civic	17.363 17.363 (6) 130.404km/h (5) 17.475(6) 126.660km/h (6)	7.088
91.	330	FLOP	I.kat.diesel do obsahu 2000 ccm	Škoda Octvia II	17.443 17.443(14) 134.506km/h (14) 17.898(15) 129.961km/h (15) 17.780 (15) 130.486km/h (15)	7.168
92.	87	DANČA Harakiri	I.kat.benzin do obsahu 2000 ccm	Mazda	17.920 17.920(7) 126.582km/h (7) 18.942(8) 121.514km/h (7) 18.894 (8) 119.798km/h (7)	7.645
93.	51	RÁJA	I.kat.benzin do obsahu 1600 ccm	Mazda 323 F B6	18.033 18.033(10) 123.867km/h (10) 18.403(10) 121.759km/h (10) 18.115 (10) 122.560km/h (10)	7.758
94.	83	KARLOS	I.kat.benzin do obsahu 2000 ccm	BMW	18.288 18.288(8) 125.980km/h (8) 18.828(7) 116.812km/h (8) 18.738 (7) 122.601km/h (6)	8.013
95.	122	KENTAUR	I.kat.benzin do obsahu 2500 ccm	VW Passat	18.416 18.416(13) 123.329km/h (13) 18.938(13) 117.571km/h (13) 19.047 (13) 111.453km/h (13)	8.141
96.	52	PŠENDA	I.kat.benzin do obsahu 1600 ccm	Opel Vectra B	19.095 19.095(11) 115.365km/h (11) 19.170(11) 118.910km/h (11) 19.193 (11) 114.263km/h (11)	8.820

Přihlášeno 0
Startovalo 0
Klasifikováno 0

Kategorie II - speciální vozy

Poř.	Stč	Jméno	Třída	stroj	Čas	Ztráta
			1. pokus 3. pokus 5. pokus			
1.	527	BOHUSLÁVEK Václav	II.kat.benzin nad 2000 ccm	Shelby Cobra 427	11.597 11.597 (1) 210.397km/h (1) 11.884(1) 203.513km/h (1) 11.813 (1) 210.185km/h (1)	
2.	529	HUJER	II.kat.benzin nad 2000 ccm	Pontiac	12.217 12.217 (2) 193.587km/h (2) 12.375(2) 185.380km/h (4) 12.879 (2) 183.610km/h (2)	0.620
3.	536	MIKI Louda	II.kat.benzin nad 2000 ccm	BMW 335i	12.540 12.540(3) 189.560km/h (2) 12.729(3) 188.141km/h (3) 16.490 (18) 92.995km/h (19)	0.943
4.	524	KRUML Petr	II.kat.benzin nad 2000 ccm	Cobra	12.961 12.961 (3) 178.056km/h (4) 13.256(4) 177.372km/h (6) 13.225(4) 176.630km/h (6)	1.364
5.	562	FRIC Michal	II.kat.Diesel do 2000 ccm	VW Golf II	13.244 13.244(1) 175.603km/h (1) 13.822(1) 170.934km/h (1) 13.563 (1) 167.947km/h (1)	1.647

Poř.	Stč	Jméno	Třída	stroj	Čas	Ztráta
			1. pokus		2. pokus	
			3. pokus		4. pokus	
			5. pokus		6. pokus	
6.	247	FRU FRU	II.kat.benzin nad 2000 ccm 13.362(5) 185.842km/h (4) 13.328(5) 183.614km/h (5)	Toyota Supra	13.328 13.973 (7) 175.212km/h (5)	1.731
7.	523	DVOŘÁK Josef	II.kat.benzin nad 2000 ccm 13.424(6) 176.756km/h (7) 13.368(6) 171.171km/h (7)	Fiat Coupé	13.368 13.477 (4) 170.711km/h (6)	1.771
8.	525	WERTTHEIM Honza	II.kat.benzin nad 2000 ccm 13.473(7) 185.228km/h (5) 13.427(7) 186.029km/h (3)	Ford GT 40	13.427 13.990 (8) 182.218km/h (3)	1.830
9.	485	ZIZIVZI	II.kat.benzin do 2000 ccm 13.892(1) 171.624km/h (1) 13.487(1) 170.174km/h (1)	Honda Civic	13.487 13.668 (1) 172.535km/h (1)	1.890
10.	521	TOULA Jiří	II.kat.benzin nad 2000 ccm 13.491(8) 173.274km/h (8) 14.328(10) 158.035km/h (8)	Brouk	13.491 15.000 (12) 109.258km/h (18)	1.894
11.	526	GULF	II.kat.benzin nad 2000 ccm 13.894(9) 169.129km/h (9)	AC Cobra 427 SC	13.521 13.521 (5) 167.568km/h (7)	1.924
12.	534	KOPEC Harakiri	II.kat.benzin nad 2000 ccm 14.123(10) 153.398km/h (12) 14.205(8) 157.682km/h (9)	Subaru Impreza	13.754 13.754 (6) 156.178km/h (10)	2.157
13.	532	BRUTILA	II.kat.benzin nad 2000 ccm 14.142(11) 156.705km/h (11) 14.247(9) 157.632km/h (10)	Honda Civic	14.011 14.011 (9) 156.724km/h (9)	2.414
14.	561	JIRKA-1	II.kat.Diesel do 2000 ccm 14.338(2) 158.546km/h (2) 15.234(2) 149.537km/h (3)	BMW 125d	14.338 14.837 (2) 150.626km/h (2)	2.741
15.	537	TIFANY	II.kat.benzin nad 2000 ccm 14.777(12) 149.742km/h (14) 14.727(11) 154.963km/h (11)	Škoda Octavia	14.622 14.622 (10) 154.880km/h (11)	3.025
16.	522	WARHOL	II.kat.benzin nad 2000 ccm 15.310(14) 153.046km/h (13) 15.480(15) 147.918km/h (15)	Fiat Coupe	14.978 14.978 (11) 160.892km/h (8)	3.381
17.	530	MATTY	II.kat.benzin nad 2000 ccm 15.288(13) 148.201km/h (17) 14.983(12) 149.388km/h (14)	Škoda Fabia	14.983 15.057 (13) 148.111km/h (14)	3.386
18.	533	MORYMOTO	II.kat.benzin nad 2000 ccm 15.526(16) 146.603km/h (18) 15.182(13) 154.192km/h (12)	BMW E30	15.182 15.229 (14) 147.839km/h (15)	3.585
19.	528	PACOŠ	II.kat.benzin nad 2000 ccm 17.604(18) 148.568km/h (16) 15.225(14) 151.764km/h (13)	Sebrin	15.225 15.645 (16) 151.317km/h (12)	3.628
20.	563	VENCA	II.kat.Diesel do 2000 ccm 15.809(4) 149.959km/h (3) 16.965(4) 137.830km/h (4)	Škoda Felicia	15.296 15.296 (3) 149.556km/h (4)	3.699
21.	564	REGITKO Roman	II.kat.Diesel do 2000 ccm 15.631(3) 147.246km/h (4) 15.404(3) 150.405km/h (2)	VW Golf	15.404 15.487 (4) 149.770km/h (3)	3.807

Poř.	Stč	Jméno	Třída	stroj	Čas	Ztráta
			1. pokus 3. pokus 5. pokus		2. pokus 4. pokus 6. pokus	
22.	535	ABELES	II.kat.benzin nad 2000 ccm 15.422(15) 158.852km/h (10) 17.520(17) 135.549km/h (17)	Seat Ibiza	15.422 15.960 (17) 144.439km/h (16)	3.825
23.	531	VW Golf II	II.kat.benzin nad 2000 ccm 15.617(17) 149.091km/h (15) 15.901(16) 145.000km/h (16)	VW Golf II	15.617 15.638 (15) 149.730km/h (13)	4.020
24.	484	ĎUBY	II.kat.benzin do 2000 ccm 16.068(2) 140.861km/h (2) 15.885(2) 145.088km/h (2)	Honda CRX	15.885 16.096 (2) 142.472km/h (2)	4.288
25.	487	PUSTIL Harakiri	II.kat.benzin do 2000 ccm 18.120(5) 121.406km/h (5) 16.862(3) 136.899km/h (3)	Mazda 323F	16.862 17.395 (5) 131.434km/h (3)	5.265
26.	481	VAVRUŠKA Jiří	II.kat.benzin do 2000 ccm 17.362(4) 127.349km/h (4) 16.920(4) 124.455km/h (6)	Škoda Favorit	16.920 17.282 (4) 123.994km/h (6)	5.323
27.	488	KRÁLÍK	II.kat.benzin do 2000 ccm 17.130(3) 126.222km/h (3) 17.032(5) 129.182km/h (4)	Mazda 323 F BG	17.032 17.072 (3) 126.919km/h (4)	5.435
28.	486	MARTY	II.kat.benzin do 2000 ccm 18.249(6) 120.635km/h (6) 17.458(6) 127.135km/h (5)	Škoda	17.458 17.522 (6) 126.068km/h (5)	5.861
29.	44	ANDRLE Lukáš	II.kat.benzin nad 2000 ccm 13:39:21(19) 121.259km/h (19) 18.092(18) 124.296km/h (18)	BMW	18.092 19.029 (19) 116.426km/h (17)	6.495
30.	482	JOHN	II.kat.benzin do 2000 ccm 18.663(7) 118.098km/h (7) 18.310(7) 119.631km/h (7)	Škoda Fabia	18.264 18.264 (7) 122.638km/h (7)	6.667
31.	483	JÍČKA	II.kat.benzin do 2000 ccm 19.135(8) 115.248km/h (8) 18.938(8) 116.209km/h (8)	Škoda Fabia	18.938 20.016 (8) 107.525km/h (8)	7.341

Přihlášeno 0
Startovalo 0
Klasifikováno 0

Automobily bez rozdílu

Poř.	Stč	Jméno	Třída	stroj	Čas	Ztráta
			1. pokus		2. pokus	
			3. pokus		4. pokus	
			5. pokus		6. pokus	
1.	282	TOM	I.kat.benzin nad obsah 4000 ccm	Nissan GTR	10.275	
			10.903(1) 229.493km/h (1)		10.275 (1) 219.528km/h (1)	
			10.349(1) 224.789km/h (1)			
2.	527	BOHUSLÁVEK Václav	II.kat.benzin nad 2000 ccm	Shelby Cobra 427	11.597	1.322
			11.597(1) 210.397km/h (1)		11.813 (1) 210.185km/h (1)	
			11.884(1) 203.513km/h (1)			
3.	529	HUJER	II.kat.benzin nad 2000 ccm	Pontiac	12.217	1.942
			12.217(2) 193.587km/h (2)		12.879 (2) 183.610km/h (2)	
			12.375(2) 185.380km/h (4)			
4.	285	MÁRA	I.kat.benzin nad obsah 4000 ccm	Chevrolet Corvette 6	12.279	2.004
			12.530(2) 189.331km/h (3)		12.279 (2) 197.886km/h (2)	
			12.373(2) 189.433km/h (2)			
5.	286	MVOLESKO profituning	I.kat.benzin nad obsah 4000 ccm	Porsche 911	12.510	2.235
			12.683(3) 193.829km/h (2)		12.659 (3) 193.861km/h (3)	
			12.510(3) 188.343km/h (3)			
6.	536	MIKI Louda	II.kat.benzin nad 2000 ccm	BMW 335i	12.540	2.265
			12.729(3) 186.141km/h (3)		16.490 (18) 92.995km/h (19)	
			12.540(3) 189.560km/h (2)			
7.	524	KRUML Petr	II.kat.benzin nad 2000 ccm	Cobra	12.961	2.686
			13.256(4) 177.372km/h (6)		12.961 (3) 178.056km/h (4)	
			13.225(4) 176.630km/h (6)			
8.	403	OŠKRDA Dušan	I.kat.diesel do obsahu 3000 ccm	BMW 330xd	13.189	2.914
			13.241(1) 169.174km/h (2)		13.189 (1) 173.986km/h (2)	
			13.243(1) 174.336km/h (1)			
9.	562	FRIC Michal	II.kat.Diesel do 2000 ccm	VW Golf II	13.244	2.969
			13.822(1) 170.934km/h (1)		13.563 (1) 167.947km/h (1)	
			13.244(1) 175.603km/h (1)			
10.	247	FRU FRU	II.kat.benzin nad 2000 ccm	Toyota Supra	13.328	3.053
			13.362(5) 185.842km/h (4)		13.973 (7) 175.212km/h (5)	
			13.328(5) 183.614km/h (5)			
11.	409	LUCASO	I.kat.diesel do obsahu 3000 ccm	BMW	13.353	3.078
			13.353(2) 176.643km/h (1)		13.486 (2) 177.069km/h (1)	
			13.572(3) 171.112km/h (3)			
12.	523	DVOŘÁK Josef	II.kat.benzin nad 2000 ccm	Fiat Coupé	13.368	3.093
			13.424(6) 176.756km/h (7)		13.477 (4) 170.711km/h (6)	
			13.368(6) 171.171km/h (7)			
13.	525	WERTTHEIM Honza	II.kat.benzin nad 2000 ccm	Ford GT 40	13.427	3.152
			13.473(7) 185.228km/h (5)		13.990 (8) 182.218km/h (3)	
			13.427(7) 186.029km/h (3)			
14.	485	ZIZIVZI	II.kat.benzin do 2000 ccm	Honda Civic	13.487	3.212
			13.892(1) 171.624km/h (1)		13.668 (1) 172.535km/h (1)	
			13.487(1) 170.174km/h (1)			
15.	521	TOULA Jiří	II.kat.benzin nad 2000 ccm	Brouk	13.491	3.216
			13.491(8) 173.274km/h (8)		15.000 (12) 109.258km/h (18)	
			14.328(10) 158.035km/h (8)			

Poř.	Stč	Jméno	Třída	stroj	Čas	Ztráta
			1. pokus		2. pokus	
			3. pokus		4. pokus	
			5. pokus		6. pokus	
16.	407	ŠKUBY	I.kat.diesel do obsahu 3000 ccm BMW		13.515	3.240
			13.638(3) 164.806km/h (4)		13.515 (3) 172.504km/h (3)	
			13.554(2) 173.283km/h (2)			
17.	526	GULF	II.kat.benzin nad 2000 ccm	AC Cobra 427 SC	13.521	3.246
			13.894(9) 169.129km/h (9)		13.521 (5) 167.568km/h (7)	
18.	325	STANO TDi Drápek	I.kat.diesel do obsahu 2000 ccm VW Golf		13.561	3.286
			13.866(2) 164.625km/h (3)		13.736 (1) 161.163km/h (3)	
			13.561(1) 161.088km/h (4)			
19.	244	JAKUB	I.kat.benzin do obsahu 4000 ccm Nissan 370 Z		13.579	3.304
			13.698(1) 170.960km/h (2)		13.579 (1) 165.549km/h (2)	
			13.655(1) 170.652km/h (1)			
20.	333	MIRULU	I.kat.diesel do obsahu 2000 ccm Škoda Octavia		13.611	3.336
			13.611(1) 181.138km/h (1)		13.856 (2) 186.417km/h (1)	
			13.684(2) 176.921km/h (1)			
21.	284	MAŠEK Jiří	I.kat.benzin nad obsah 4000 ccm Lexus ISF		13.651	3.376
			13.782(4) 168.996km/h (4)		13.651 (4) 170.281km/h (4)	
			13.666(4) 176.002km/h (4)			
22.	203	PETR Ryčavý	I.kat.benzin do obsahu 3500 ccm Fiat Coupe		13.709	3.434
			13.931(1) 178.396km/h (1)		13.744 (1) 177.843km/h (1)	
			13.709(1) 178.412km/h (1)			
23.	246	KOUBIČ	I.kat.benzin do obsahu 4000 ccm BMW M23		13.715	3.440
			13.715(2) 172.213km/h (1)		14.424 (2) 175.959km/h (1)	
			13.824(2) 165.572km/h (2)			
24.	406	LUŇA 330D	I.kat.diesel do obsahu 3000 ccm BMW 330D		13.738	3.463
			13.901(5) 165.646km/h (3)		21.921 (11) 118.537km/h (11)	
			13.738(4) 166.155km/h (5)			
25.	404	INDI TDi garage	I.kat.diesel do obsahu 3000 ccm Audi A40 30TDi		13.742	3.467
			13.742(4) 162.730km/h (5)		13.826 (4) 161.797km/h (4)	
			14.151(7) 166.753km/h (4)			
26.	534	KOPEC Harakiri	II.kat.benzin nad 2000 ccm	Subaru Impreza	13.754	3.479
			14.123(10) 153.398km/h (12)		13.754 (6) 156.178km/h (10)	
			14.205(8) 157.662km/h (9)			
27.	167	PRCEK	I.kat.benzin do obsahu 3000 ccm BMW . M3		13.836	3.561
			14.110(1) 166.019km/h (1)		13.836 (1) 162.154km/h (2)	
			13.935(1) 161.480km/h (1)			
28.	281	GÜRTUER Jakub	I.kat.benzin nad obsah 4000 ccm Audi R8		13.858	3.583
			15.054(6) 141.620km/h (6)		13.909 (5) 160.946km/h (6)	
			13.858(5) 161.759km/h (6)			
29.	402	SURMIK Křištof	I.kat.diesel do obsahu 3000 ccm Audi A5		13.901	3.626
			14.839(9) 155.251km/h (9)		13.917 (6) 161.402km/h (5)	
			13.901(5) 161.792km/h (6)			
30.	411	DANDY	I.kat.diesel do obsahu 3000 ccm Audi A5		13.906	3.631
			14.136(6) 159.973km/h (7)		13.906 (5) 160.920km/h (6)	
			14.041(6) 160.254km/h (7)			
31.	283	KIR Milan	I.kat.benzin nad obsah 4000 ccm Audi S6		13.923	3.648
			14.288(5) 165.460km/h (5)		14.310 (6) 165.908km/h (5)	
			13.923(6) 169.823km/h (5)			

Poř.	Stč	Jméno	Třída	stroj	Čas	Ztráta
			1. pokus		2. pokus	
			3. pokus		4. pokus	
			5. pokus		6. pokus	
32.	322	SAPY	I.kat.diesel do obsahu 2000 ccm	VW Golf IV	14.001	3.726
			14.147(3) 160.976km/h (7)	14.001 (3)	160.707km/h (4)	
			14.002(3) 162.636km/h (3)			
33.	532	BRUTILA	II.kat.benzin nad 2000 ccm	Honda Civic	14.011	3.736
			14.142(11) 156.705km/h (11)	14.011 (9)	156.724km/h (9)	
			14.247(9) 157.632km/h (10)			
34.	81	TRANOVÁ Irena	I.kat.benzin do obsahu 2000 ccm	Lotus Elise	14.079	3.804
			14.108(1) 161.337km/h (1)	14.079 (1)	156.884km/h (2)	
			14.232(1) 159.905km/h (1)			
35.	204	RADZO	I.kat.benzin do obsahu 3500 ccm	VW Golf	14.174	3.899
			14.313(2) 165.490km/h (2)	14.251 (3)	162.114km/h (3)	
			14.174(2) 166.606km/h (2)			
36.	241	CEBE Robert	I.kat.benzin do obsahu 3500 ccm	Subaru Impreza STI	14.223	3.948
			14.369(3) 157.399km/h (4)	14.223 (2)	158.529km/h (4)	
			14.682(4) 147.051km/h (7)			
37.	85	PARY	I.kat.benzin do obsahu 2000 ccm	Nissan Sunny	14.249	3.974
			14.429(2) 154.032km/h (2)	14.304 (2)	160.188km/h (1)	
			14.249(2) 154.342km/h (2)			
38.	162	SEMIR	I.kat.benzin do obsahu 3000 ccm	BMW M3	14.288	4.013
			14.526(2) 153.550km/h (3)	14.288 (2)	163.882km/h (1)	
			14.341(2) 159.834km/h (2)			
39.	43	MÍŠAN	I.kat.benzin do obsahu 1600 ccm	Honda Civic	14.320	4.045
			14.732(1) 159.202km/h (1)	14.367 (1)	160.902km/h (1)	
			14.320(1) 161.755km/h (1)			
40.	561	JIRKA-1	II.kat.Diesel do 2000 ccm	BMW 125d	14.338	4.063
			14.338(2) 158.546km/h (2)	14.837 (2)	150.626km/h (2)	
			15.234(2) 149.537km/h (3)			
41.	130	ROBERT-RX	I.kat.benzin do obsahu 2500 ccm	Honda Prelude	14.386	4.111
			15.412(2) 155.396km/h (2)	14.697 (1)	152.129km/h (2)	
			14.386(1) 153.219km/h (2)			
42.	324	LÁĎA TDi Drápek	I.kat.diesel do obsahu 2000 ccm	VW Golf	14.394	4.119
			14.425(4) 161.895km/h (6)	14.394 (4)	155.531km/h (6)	
			14.884(5) 143.250km/h (9)			
43.	321	KOBBE	I.kat.diesel do obsahu 2000 ccm	Fabia RS	14.466	4.191
			15.511(8) 164.663km/h (2)	14.466 (5)	168.998km/h (2)	
			14.674(4) 169.823km/h (2)			
44.	410	ROUD Ondřej	I.kat.diesel do obsahu 3000 ccm	BMW 330XD	14.524	4.249
			14.579(8) 152.305km/h (10)	14.529 (7)	156.474km/h (9)	
			14.524(8) 156.640km/h (9)			
45.	401	KAPITÁN Šnek	I.kat.diesel do obsahu 3000 ccm	BMW 535d	14.532	4.257
			14.532(7) 160.755km/h (6)	14.670 (8)	159.620km/h (7)	
			15.002(10) 159.110km/h (8)			
46.	205	BÁRTIČKA Jiří	I.kat.benzin do obsahu 3500 ccm	BMW	14.621	4.346
			14.861(4) 158.494km/h (3)	14.688 (4)	165.184km/h (2)	
			14.621(3) 165.075km/h (3)			
47.	537	TIFANY	II.kat.benzin nad 2000 ccm	Škoda Octavia	14.622	4.347
			14.777(12) 149.742km/h (14)	14.622 (10)	154.880km/h (11)	
			14.727(11) 154.963km/h (11)			

Poř.	Stč	Jméno	Třída	stroj	Čas	Ztráta
			1. pokus		2. pokus	
			3. pokus		4. pokus	
			5. pokus		6. pokus	
48.	362	RADEK156	I.kat.diesel do obsahu 2500 ccm	Alfa Romeo	14.660	4.385
			14.757(1) 166.770km/h (1)	16.219 (1)	142.653km/h (1)	
			14.660(1) 161.407km/h (1)			
49.	408	ŠTRACH Martin	I.kat.diesel do obsahu 3000 ccm	BMW 535D	14.712	4.437
			14.912(10) 158.730km/h (8)	18.031 (10)	157.483km/h (8)	
			14.712(9) 156.615km/h (10)			
50.	48	DAVID VTi	I.kat.benzin do obsahu 1600 ccm	Honda Civic	14.769	4.494
			14.936(2) 148.729km/h (3)	14.865 (2)	146.636km/h (4)	
			14.769(2) 152.298km/h (2)			
51.	84	MATOUŠ Jindřich	I.kat.benzin do obsahu 2000 ccm	Opel Kadet GTi	14.775	4.500
			14.881(3) 149.804km/h (3)	16.614 (6)	107.494km/h (8)	
			14.775(3) 149.343km/h (3)			
52.	131	ZAHÁLKA Václav	I.kat.benzin do obsahu 2500 ccm	Fiat Uno	14.780	4.505
			15.072(7) 156.054km/h (1)	14.843 (2)	160.452km/h (1)	
			14.780(2) 162.811km/h (1)			
53.	405	ROUBIC	I.kat.diesel do obsahu 3000 ccm	Audi A6	14.802	4.527
			15.044(11) 152.134km/h (11)	14.802 (9)	147.598km/h (10)	
			15.034(11) 152.871km/h (11)			
54.	47	PETKA	I.kat.benzin do obsahu 1600 ccm	Honda CRX	14.836	4.561
			15.094(3) 153.948km/h (2)	14.905 (3)	153.631km/h (2)	
			14.836(3) 151.562km/h (3)			
55.	522	WARHOL	II.kat.benzin nad 2000 ccm	Fiat Coupe	14.978	4.703
			15.310(14) 153.046km/h (13)	14.978 (11)	160.892km/h (8)	
			15.480(15) 147.918km/h (15)			
56.	530	MATTY	II.kat.benzin nad 2000 ccm	Škoda Fabia	14.983	4.708
			15.288(13) 148.201km/h (17)	15.057 (13)	148.111km/h (14)	
			14.983(12) 149.388km/h (14)			
57.	323	MÁCA- TDi Drápek	I.kat.diesel do obsahu 2000 ccm	VW Golf	15.005	4.730
			15.005(5) 162.131km/h (5)	15.156 (6)	157.146km/h (5)	
			17.469(15) 141.726km/h (10)			
58.	163	HORÁK Jan	I.kat.benzin do obsahu 3000 ccm	Opel Kadet 2.0	15.084	4.809
			15.313(3) 142.825km/h (7)	15.084 (3)	143.823km/h (5)	
			15.162(4) 144.842km/h (5)			
59.	164	SKŘIVÁNEK Tomáš	I.kat.benzin do obsahu 3000 ccm	BMW 330i	15.091	4.816
			15.373(4) 154.855km/h (2)	15.204 (4)	155.038km/h (3)	
			15.091(3) 157.787km/h (3)			
60.	327	PROCHY	I.kat.diesel do obsahu 2000 ccm	Seat Ibiza	15.145	4.870
			15.145(6) 162.568km/h (4)	15.205 (7)	153.211km/h (7)	
			15.718(8) 160.094km/h (5)			
61.	206	MĚSÍC	I.kat.benzin do obsahu 3500 ccm	VW Golf 5 GTi	15.167	4.892
			15.423(6) 148.461km/h (7)	15.167 (5)	153.972km/h (5)	
			15.533(6) 149.775km/h (5)			
62.	4	DREXLER Tomáš	I.kat.benzin obsahu 1400 ccm	Škoda Favorit	15.173	4.898
			15.502(7) 143.866km/h (1)	15.173 (1)	145.338km/h (1)	
			15.460(7) 138.106km/h (1)			
63.	533	MORYMOTO	II.kat.benzin nad 2000 ccm	BMW E30	15.182	4.907
			15.526(16) 146.603km/h (18)	15.229 (14)	147.839km/h (15)	
			15.182(13) 154.192km/h (12)			

Poř.	Stč	Jméno	Třída	stroj	Čas	Ztráta
			1. pokus		2. pokus	
			3. pokus		4. pokus	
			5. pokus		6. pokus	
64.	45	LUKÁŠ	I.kat.benzin do obsahu 1600 ccm	Honda CRX	15.215	4.940
			15.438(5) 144.675km/h (4)	15.338(4) 145.453km/h (5)		
			15.215(4) 146.347km/h (4)			
65.	528	PACOŠ	II.kat.benzin nad 2000 ccm	Sebrin	15.225	4.950
			17.604(18) 148.568km/h (16)	15.645(16) 151.317km/h (12)		
			15.225(14) 151.764km/h (13)			
66.	328	ŠUNKA	I.kat.diesel do obsahu 2000 ccm	VW Golf II	15.237	4.962
			16.165(10) 139.345km/h (10)	15.498(8) 150.796km/h (9)		
			15.237(6) 156.294km/h (6)			
67.	210	TAJBL Michal	I.kat.benzin do obsahu 3500 ccm	Audi A3	15.276	5.001
			15.367(5) 147.595km/h (8)	15.276(6) 150.360km/h (8)		
			15.529(5) 154.063km/h (4)			
68.	563	VENCA	II.kat.Diesel do 2000 ccm	Škoda Felicia	15.296	5.021
			15.809(4) 149.959km/h (3)	15.296(3) 149.556km/h (4)		
			16.965(4) 137.830km/h (4)			
69.	207	DRESIK Scuderia Itai	I.kat.benzin do obsahu 3500 ccm	Lancia Delta HF	15.378	5.103
			15.429(7) 151.780km/h (5)	15.378(7) 153.198km/h (6)		
			15.538(7) 147.245km/h (6)			
70.	564	REGITKO Roman	II.kat.Diesel do 2000 ccm	VW Golf	15.404	5.129
			15.631(3) 147.246km/h (4)	15.487(4) 149.770km/h (3)		
			15.404(3) 150.405km/h (2)			
71.	41	LUKÁŠ Zeman	I.kat.benzin do obsahu 1600 ccm	Honda Civic VTi	15.421	5.146
			15.421(4) 143.830km/h (5)	15.633(6) 144.112km/h (6)		
			15.609(5) 143.978km/h (7)			
72.	535	ABELES	II.kat.benzin nad 2000 ccm	Seat Ibiza	15.422	5.147
			15.422(15) 158.852km/h (10)	15.960(17) 144.439km/h (16)		
			17.520(17) 135.549km/h (17)			
73.	329	MILI TDi Drápek	I.kat.diesel do obsahu 2000 ccm	Seat Leon	15.457	5.182
			15.457(7) 146.573km/h (9)	15.534(9) 152.464km/h (8)		
			15.567(7) 151.737km/h (7)			
74.	49	FÍLA	I.kat.benzin do obsahu 1600 ccm	Honad Civic	15.500	5.225
			16.163(7) 140.593km/h (7)	15.500(5) 150.009km/h (3)		
			15.666(7) 144.588km/h (5)			
75.	166	OLAN	I.kat.benzin do obsahu 3000 ccm	BMW	15.557	5.282
			16.113(6) 130.422km/h (9)	15.557(5) 143.237km/h (6)		
			15.610(5) 142.430km/h (8)			
76.	531	VW Golf II	II.kat.benzin nad 2000 ccm	VW Golf II	15.617	5.342
			15.617(17) 149.091km/h (15)	15.638(15) 149.730km/h (13)		
			15.901(16) 145.000km/h (16)			
77.	42	ŠVÁB	I.kat.benzin do obsahu 1600 ccm	Honda CRX	15.627	5.352
			16.976(8) 124.762km/h (9)	15.780(8) 143.494km/h (7)		
			15.627(6) 144.310km/h (6)			
78.	201	MILIS.19	I.kat.benzin do obsahu 3500 ccm	Mitsubischi Eclips	15.655	5.380
			16.186(8) 148.764km/h (6)	15.655(8) 153.023km/h (7)		
			16.365(9) 141.860km/h (10)			
79.	82	HRABĚ Martin	I.kat.benzin do obsahu 2000 ccm	Mitsubischi Eclips	15.693	5.418
			15.837(4) 146.469km/h (4)	15.693(3) 151.235km/h (3)		
			16.373(4) 139.909km/h (5)			

Poř.	Stč	Jméno	Třída	stroj	Čas	Ztráta
			1. pokus		2. pokus	
			3. pokus		4. pokus	
			5. pokus		6. pokus	
80.	50	PATYS	I.kat.benzin do obsahu 1600 ccm	Honda CRX	15.720	5.445
			15.799 (6) 142.865km/h (6)	15.778 (7) 142.171km/h (8)		
			15.720 (8) 142.376km/h (8)			
81.	161	POSPI	I.kat.benzin do obsahu 3000 ccm	BMW E46 328i	15.724	5.449
			16.442 (8) 144.386km/h (5)	16.132 (7) 143.230km/h (7)		
			15.724 (6) 145.936km/h (4)			
82.	243	MUSTAFA	I.kat.benzin do obsahu 4000 ccm	Ford Mustang	15.763	5.488
			16.254 (3) 148.256km/h (3)	15.763 (3) 149.143km/h (3)		
			15.995 (3) 148.766km/h (3)			
83.	169	MARCEL Brožek	I.kat.benzin do obsahu 3000 ccm	BMW E46 330ci	15.798	5.523
			16.112 (5) 144.666km/h (4)	15.798 (6) 141.891km/h (9)		
			15.934 (7) 143.433km/h (7)			
84.	334	VARGY	I.kat.diesel do obsahu 2000 ccm	Seat Leon	15.831	5.556
			15.948 (9) 147.057km/h (8)	15.831 (10) 149.857km/h (10)		
			16.015 (9) 147.332km/h (8)			
85.	202	ZARDA	I.kat.benzin do obsahu 3500 ccm	Mitsubishi Eclips	15.836	5.561
			18.112 (11) 121.376km/h (11)	16.133 (9) 146.643km/h (9)		
			15.836 (8) 146.768km/h (8)			
86.	123	WOLFRAM Vladimír	I.kat.benzin do obsahu 2500 ccm	Fiat Punto GT	15.859	5.584
			15.885 (3) 143.655km/h (4)	15.859 (3) 144.246km/h (4)		
			16.354 (6) 137.633km/h (7)			
87.	484	ĎUBY	II.kat.benzin do 2000 ccm	Honda CRX	15.885	5.610
			16.068 (2) 140.861km/h (2)	16.096 (2) 142.472km/h (2)		
			15.885 (2) 145.088km/h (2)			
88.	3	POVÝŠIL Lukáš	I.kat.benzin obsahu 1400 ccm	Citroen Saxo	15.956	5.681
			16.056 (2) 136.318km/h (3)	15.956 (2) 137.801km/h (2)		
			16.018 (2) 133.705km/h (3)			
89.	124	JIRKA VTi	I.kat.benzin do obsahu 2500 ccm	Honda Prelude 4G	16.072	5.797
			16.142 (4) 146.748km/h (3)	16.072 (4) 145.553km/h (3)		
			16.276 (4) 143.907km/h (3)			
90.	165	BERY	I.kat.benzin do obsahu 3000 ccm	Opel Omega	16.122	5.847
			16.723 (9) 134.673km/h (8)	16.403 (9) 144.822km/h (4)		
			16.122 (8) 140.959km/h (9)			
91.	168	BELLE Tomáš	I.kat.benzin do obsahu 3000 ccm	Peugeot 406	16.196	5.921
			16.277 (7) 143.023km/h (6)	16.368 (8) 142.386km/h (8)		
			16.196 (9) 143.942km/h (6)			
92.	125	KASKI	I.kat.benzin do obsahu 2500 ccm	BMW	16.232	5.957
			16.391 (5) 136.599km/h (7)	16.581 (8) 136.571km/h (7)		
			16.232 (3) 137.401km/h (8)			
93.	133	PAJANROSS	I.kat.benzin do obsahu 2500 ccm	Hond Accord RR	16.281	6.006
			16.398 (6) 142.774km/h (5)	16.405 (5) 142.196km/h (5)		
			16.281 (5) 137.941km/h (6)			
94.	208	STRAČENKA	I.kat.benzin do obsahu 3500 ccm	škoda Octavia	16.326	6.051
			16.762 (9) 142.257km/h (9)	16.326 (10) 143.414km/h (10)		
			16.366 (10) 143.253km/h (9)			
95.	86	PAVEL Scuderia ItalM	I.kat.benzin do obsahu 2000 ccm	Alfa Romeo 147	16.342	6.067
			16.533 (5) 136.234km/h (5)	16.342 (4) 141.746km/h (4)		
			16.417 (5) 136.385km/h (6)			

Poř.	Stč	Jméno	Třída	stroj	Čas	Ztráta
			1. pokus		2. pokus	
			3. pokus		4. pokus	
			5. pokus		6. pokus	
96.	46	BAKY	I.kat.benzin do obsahu 1600 ccm	Honda CRX	16.353	6.078
			17.207(9) 140.204km/h (8)		16.353(9) 142.007km/h (9)	
			16.413(9) 129.069km/h (9)			
97.	361	KRISTE	I.kat.diesel do obsahu 2500 ccm	BMW	16.364	6.089
			16.604(2) 141.148km/h (2)		16.364(2) 136.304km/h (2)	
			16.731(2) 136.586km/h (2)			
98.	245	HEFA	I.kat.benzin do obsahu 4000 ccm	Ford Probe	16.414	6.139
			16.632(4) 138.858km/h (4)		16.414(4) 137.835km/h (4)	
			16.620(4) 137.704km/h (4)			
99.	88	ŽŮREK David	I.kat.benzin do obsahu 2000 ccm	Peugeot 206 S16	16.496	6.221
			16.943(6) 133.763km/h (6)		16.577(5) 137.470km/h (5)	
			16.496(6) 141.205km/h (4)			
100.	126	TOCI	I.kat.benzin do obsahu 2500 ccm	BMW	16.498	6.223
			16.498(7) 134.849km/h (9)		16.551(7) 134.854km/h (10)	
			16.580(8) 135.223km/h (10)			
101.	129	LUKY	I.kat.benzin do obsahu 2500 ccm	Ford Probe	16.527	6.252
			16.574(8) 135.133km/h (8)		16.527(6) 135.324km/h (8)	
			16.671(9) 134.209km/h (11)			
102.	326	GROF Marek	I.kat.diesel do obsahu 2000 ccm	VW Golf IV	16.537	6.262
			16.671(11) 132.740km/h (12)		16.590(11) 139.876km/h (11)	
			16.537(10) 134.563km/h (13)			
103.	132	RICHINA	I.kat.benzin do obsahu 2500 ccm	BMW E36 325i	16.557	6.282
			17.471(11) 131.106km/h (12)		16.744(11) 129.583km/h (12)	
			16.557(7) 135.366km/h (9)			
104.	2	LAFY	I.kat.benzin obsahu 1400 ccm	Honda Civic	16.588	6.313
			16.588(3) 133.812km/h (4)		16.688(4) 129.708km/h (5)	
			16.726(3) 129.767km/h (4)			
105.	6	PUNKERKA 89	I.kat.benzin obsahu 1400 ccm	Honda Civic	16.610	6.335
			16.610(4) 138.955km/h (2)		16.621(3) 131.342km/h (4)	
			16.815(5) 134.078km/h (2)			
106.	121	WURA Lukáš	I.kat.benzin do obsahu 2500 ccm	Alfa Romeo 156	16.655	6.380
			16.778(9) 140.203km/h (6)		16.655(9) 139.861km/h (6)	
			17.187(11) 127.970km/h (12)			
107.	127	LHOTY	I.kat.benzin do obsahu 2500 ccm	BMW	16.675	6.400
			16.974(10) 133.806km/h (10)		16.683(10) 135.127km/h (9)	
			16.675(10) 140.548km/h (4)			
108.	335	E30	I.kat.diesel do obsahu 2000 ccm	BMW E46 320D	16.754	6.479
			16.754(12) 131.975km/h (13)		16.768(12) 138.777km/h (12)	
			16.895(11) 135.330km/h (12)			
109.	5	GOLFI	I.kat.benzin obsahu 1400 ccm	Honda Civic	16.806	6.531
			17.141(5) 127.734km/h (6)		16.944(5) 132.156km/h (3)	
			16.806(4) 129.332km/h (5)			
110.	487	PUSTIL Harakiri	II.kat.benzin do 2000 ccm	Mazda 323F	16.862	6.587
			18.120(5) 121.406km/h (5)		17.395(5) 131.434km/h (3)	
			16.862(3) 136.899km/h (3)			
111.	481	VAVRUŠKA Jiří	II.kat.benzin do 2000 ccm	Škoda Favorit	16.920	6.645
			17.362(4) 127.349km/h (4)		17.282(4) 123.994km/h (6)	
			16.920(4) 124.455km/h (6)			

Poř.	Stč	Jméno	Třída	stroj	Čas	Ztráta
			1. pokus		2. pokus	
			3. pokus		4. pokus	
			5. pokus		6. pokus	
112.	332	HUDEC Zdeněk	I.kat.diesel do obsahu 2000 ccm	Škoda Octavia	16.929	6.654
			17.194(13) 133.403km/h (11)		16.929 (13) 136.100km/h (13)	
			17.022(12) 136.159km/h (11)			
113.	488	KRÁLÍK	II.kat.benzin do 2000 ccm	Mazda 323 F BG	17.032	6.757
			17.130(3) 128.222km/h (3)		17.072 (3) 128.919km/h (4)	
			17.032(5) 129.182km/h (4)			
114.	331	ČUDLA	I.kat.diesel do obsahu 2000 ccm	Škoda Octavia	17.044	6.769
			17.396(14) 130.124km/h (14)		17.044 (14) 132.349km/h (14)	
			17.130(13) 131.854km/h (15)			
115.	209	KOUBA	I.kat.benzin do obsahu 3500 ccm VW		17.244	6.969
			17.441(10) 132.734km/h (10)		17.443 (11) 131.907km/h (11)	
			17.244(11) 131.275km/h (11)			
116.	128	LUKAASSSS	I.kat.benzin do obsahu 2500 ccm	Opel Astra	17.262	6.987
			17.532(12) 132.412km/h (11)		17.262 (12) 133.831km/h (11)	
			17.472(12) 139.417km/h (5)			
117.	1	TOMEK	I.kat.benzin obsahu 1400 ccm	Honda Civic	17.363	7.088
			17.363(6) 130.404km/h (5)		17.590 (6) 125.414km/h (6)	
			17.475(6) 126.660km/h (6)			
118.	330	FLOP	I.kat.diesel do obsahu 2000 ccm	Škoda Octavia II	17.443	7.168
			17.898(15) 129.961km/h (15)		17.780 (15) 130.486km/h (15)	
			17.443(14) 134.506km/h (14)			
119.	486	MARTY	II.kat.benzin do 2000 ccm	Škoda	17.458	7.183
			18.249(6) 120.635km/h (6)		17.522 (6) 126.068km/h (5)	
			17.458(6) 127.135km/h (5)			
120.	87	DANČA Harakiri	I.kat.benzin do obsahu 2000 ccm	Mazda	17.920	7.645
			18.942(8) 121.514km/h (7)		18.894 (8) 119.798km/h (7)	
			17.920(7) 126.582km/h (7)			
121.	51	RÁJA	I.kat.benzin do obsahu 1600 ccm	Mazda 323 F B6	18.033	7.758
			18.403(10) 121.759km/h (10)		18.115 (10) 122.560km/h (10)	
			18.033(10) 123.867km/h (10)			
122.	44	ANDRLE Lukáš	II.kat.benzin nad 2000 ccm	BMW	18.092	7.817
			13:39:21(19) 121.259km/h (19)		19.029 (19) 116.426km/h (17)	
			18.092(18) 124.296km/h (18)			
123.	482	JOHN	II.kat.benzin do 2000 ccm	Škoda Fabia	18.264	7.989
			18.663(7) 118.098km/h (7)		18.264 (7) 122.638km/h (7)	
			18.310(7) 119.631km/h (7)			
124.	83	KARLOS	I.kat.benzin do obsahu 2000 ccm	BMW	18.288	8.013
			18.828(7) 116.812km/h (8)		18.738 (7) 122.601km/h (6)	
			18.288(8) 125.980km/h (8)			
125.	122	KENTAUR	I.kat.benzin do obsahu 2500 ccm VW Passat		18.416	8.141
			18.938(13) 117.571km/h (13)		19.047 (13) 111.453km/h (13)	
			18.416(13) 123.329km/h (13)			
126.	483	JÍČKA	II.kat.benzin do 2000 ccm	Škoda Fabia	18.938	8.663
			19.135(8) 115.248km/h (8)		20.016 (8) 107.525km/h (8)	
			18.938(8) 116.209km/h (8)			
127.	52	PŠENDA	I.kat.benzin do obsahu 1600 ccm	Opel Vectra B	19.095	8.820
			19.170(11) 118.910km/h (11)		19.193 (11) 114.263km/h (11)	
			19.095(11) 115.365km/h (11)			

Přihlášeno 0
Startovalo 0
Klasifikováno 0

Delfín
ředitel závodu