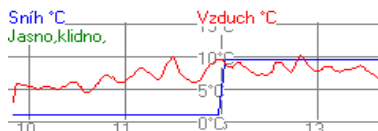




Oficiální Výsledky



všechny kategorie

Poř.	Stč	Jméno	Třída	stroj	Čas	Ztráta
			1. pokus 3. pokus 5. pokus		2. pokus 4. pokus 6. pokus	
1.	10	TOM	I.kat.benzin nad obsah 4000 ccm	Nissan GTR	10.296	
			10.296(1) 227.660km/h (1)	11.478(3) 209.961km/h (1)		
			11.575(2) 212.499km/h (1)			
2.	159	BORY	MOTOCYKL do 1000 ccm	Yamaha RN16	11.126	0.830
			12.420(2) 191.810km/h (1)	11.126(1) 213.919km/h (1)		
			11.167(2) 206.114km/h (2)			
3.	46	MIREC	MOTOCYKL do 1000 ccm	Honda CBR Fireblade	11.128	0.832
			11.244(1) 185.061km/h (2)	11.179(2) 203.280km/h (2)		
			11.128(1) 208.104km/h (1)	11.157(1) 206.694km/h (1)		
			11.405(1) 175.547km/h (1)			
4.	163	TOMÁŠ	I.kat.benzin nad obsah 4000 ccm	Nissan GT-R	11.180	0.884
			11.238(2) 203.599km/h (2)	11.180(1) 202.198km/h (2)		
5.	148	PEPA	I.kat.benzin nad obsah 4000 ccm	Porsche Carrera 911	11.236	0.940
			12.062(3) 192.895km/h (3)	11.454(2) 194.963km/h (3)		
			11.329(1) 195.357km/h (2)	11.236(1) 195.434km/h (1)		
6.	153	ČERVENKA Petr	MOTOCYKL do 600 ccm	Honda CBR 600F	12.612	2.316
			12.730(1) 162.153km/h (1)	12.612(1) 167.593km/h (1)		
			12.635(1) 171.657km/h (1)	13.922(1) 153.772km/h (1)		
			13.354(1) 158.898km/h (1)			
7.	106	MAŠÍ	II.kat.benzin do 2000 ccm	Audi S3	12.908	2.612
			13.312(1) 167.912km/h (1)	12.908(1) 170.361km/h (1)		
			12.950(1) 168.028km/h (1)	14.007(1) 160.331km/h (1)		
			13.260(1) 169.071km/h (1)			
8.	151	KREPSÍK	I.kat.diesel do obsahu 3000 ccm	BMW 435 XD	13.072	2.776
			13.129(1) 168.279km/h (2)	13.450(1) 165.175km/h (2)		
			13.264(1) 164.673km/h (4)	13.072(1) 164.869km/h (4)		
9.	126	LÁDÍK	I.kat.benzin nad obsah 4000 ccm	BMW 335i	13.150	2.854
			13.339(4) 172.380km/h (4)	13.280(4) 176.533km/h (4)		
			13.218(3) 172.269km/h (4)	13.287(2) 171.575km/h (3)		
			13.150(1) 172.854km/h (1)			
10.	49	TOM Chipforum	I.kat.diesel do obsahu 2000 ccm	Seat Leon 4	13.211	2.915
			13.603(1) 156.550km/h (3)	13.283(1) 165.881km/h (1)		
			17.747(6) 102.375km/h (7)	13.211(1) 166.116km/h (2)		
11.	143	BOČEK	I.kat.benzin nad obsah 4000 ccm	EEP SRT8	13.329	3.033
			13.882(6) 156.133km/h (6)	13.470(5) 160.956km/h (6)		
			13.390(4) 161.283km/h (5)	13.329(3) 165.488km/h (4)		
			13.412(2) 165.169km/h (2)			
12.	77	INDI TDI Garage	I.kat.diesel do obsahu 3000 ccm	Audi A40 30TDi	13.359	3.063
			13.662(2) 160.612km/h (3)	13.516(2) 166.570km/h (1)		
			13.492(4) 165.073km/h (3)	13.359(2) 166.919km/h (2)		
13.	155	DANDY	I.kat.diesel do obsahu 3000 ccm	Audi A5	13.482	3.186
			13.855(3) 158.668km/h (4)	13.579(3) 164.840km/h (3)		
			13.482(2) 165.787km/h (2)	13.487(3) 165.425km/h (3)		

Poř.	Stč	Jméno	Třída	stroj	Čas	Ztráta
			1. pokus		2. pokus	
			3. pokus		4. pokus	
			5. pokus		6. pokus	
14.	48	PETR Chipforum	I.kat.diesel do obsahu 2000 ccm	Škoda Octavia	13.484	3.188
			18.007 (6) 151.120km/h (4)		13.627 (2) 165.219km/h (2)	
			13.484 (1) 165.833km/h (2)		13.683 (3) 158.031km/h (4)	
139	MARTIN Zima	I.kat.diesel do obsahu 3000 ccm	BMW 335D	13.484	3.188	
			13.912 (4) 168.533km/h (1)		14.023 (5) 162.903km/h (4)	
			13.484 (3) 169.010km/h (1)		13.623 (4) 168.255km/h (1)	
16.	147	MAŠEK Jiří	I.kat.benzin nad obsah 4000 ccm	Lexus ISF	13.492	3.196
			13.656 (5) 171.080km/h (5)		13.496 (6) 172.997km/h (5)	
			13.533 (5) 172.467km/h (3)		13.492 (4) 173.740km/h (2)	
17.	127	DKOUBIC	I.kat.benzin do obsahu 4000 ccm	BMW 340i	13.511	3.215
			13.774 (1) 169.314km/h (1)		13.803 (1) 174.916km/h (1)	
			14.083 (2) 168.356km/h (1)		13.511 (1) 176.248km/h (1)	
			13.713 (1) 176.941km/h (1)			
18.	38	HORÁK Jan	I.kat.benzin do obsahu 3000 ccm	Opel Kadet 2.0	13.613	3.317
			13.749 (1) 168.624km/h (1)		13.909 (1) 168.539km/h (1)	
			13.613 (1) 173.803km/h (1)			
19.	119	TDI Drápek	I.kat.diesel do obsahu 2000 ccm	VW Golf	13.629	3.333
			13.745 (2) 158.246km/h (2)		13.859 (3) 162.809km/h (4)	
			13.789 (2) 158.807km/h (3)		13.629 (2) 159.551km/h (3)	
			13.708 (1) 158.557km/h (2)			
20.	105	TOULA Jiří	II.kat.benzin nad 2000 ccm	Brouk	13.679	3.383
			14.381 (1) 165.805km/h (1)		14.265 (1) 165.219km/h (1)	
			13.915 (1) 167.798km/h (1)		13.853 (1) 159.671km/h (1)	
			13.679 (1) 170.128km/h (1)			
21.	149	LUKÁŠ Kmoníček	I.kat.diesel do obsahu 3000 ccm	BMW 535 XD	13.817	3.521
			13.932 (5) 156.869km/h (5)		13.989 (4) 158.052km/h (5)	
			13.881 (5) 158.613km/h (5)		13.882 (5) 154.529km/h (6)	
			13.817 (1) 158.637km/h (1)			
22.	45	ŠVARC Jakub	I.kat.benzin do obsahu 4000 ccm	Nissan 370Z	13.901	3.605
			14.009 (2) 161.576km/h (2)		14.140 (2) 160.293km/h (2)	
			13.901 (1) 158.789km/h (2)		14.975 (2) 154.296km/h (2)	
			13.951 (2) 164.933km/h (2)			
23.	134	BARTÁČEK Jan	II.kat.benzin nad 2000 ccm	Seat Ibiza	14.138	3.842
			14.781 (2) 159.994km/h (2)		14.487 (2) 160.039km/h (2)	
			14.138 (2) 166.354km/h (2)		15.360 (2) 157.273km/h (2)	
			14.209 (2) 166.595km/h (2)			
24.	73	PRCEK	I.kat.benzin do obsahu 3000 ccm	BMW M3	14.171	3.875
			14.712 (2) 162.288km/h (2)		14.171 (2) 164.644km/h (2)	
			14.297 (2) 159.719km/h (2)			
25.	132	STRAČENKA	I.kat.benzin do obsahu 3500 ccm	Subaru Impreza WRX	14.201	3.905
			15.421 (1) 144.497km/h (2)		14.469 (1) 152.099km/h (2)	
			15.130 (2) 151.653km/h (2)		14.201 (1) 147.755km/h (2)	
			14.379 (1) 148.262km/h (2)			
26.	8	PARY	I.kat.benzin do obsahu 2000 ccm	Nissan Sunny	14.239	3.943
			14.534 (1) 152.976km/h (1)		14.305 (1) 154.514km/h (1)	
			14.239 (1) 154.698km/h (1)		14.451 (1) 158.173km/h (1)	
			14.519 (1) 152.542km/h (1)			
27.	156	FILIP	I.kat.diesel do obsahu 3000 ccm	BMW 330	14.266	3.970
			17.011 (9) 155.289km/h (6)		14.368 (6) 157.718km/h (6)	
			14.438 (6) 158.593km/h (6)		14.495 (6) 156.936km/h (5)	
			14.266 (2) 149.563km/h (4)			
28.	116	FRIC Michal	II.kat.Diesel do 2000 ccm	WV Golf II	14.279	3.983
			15.277 (1) 113.453km/h (1)		14.279 (1) 154.086km/h (1)	
			15.006 (1) 151.252km/h (1)		14.702 (1) 147.379km/h (1)	
			14.563 (1) 153.532km/h (1)			
29.	102	COOKY	I.kat.diesel do obsahu 3000 ccm	BMW	14.323	4.027
			14.326 (6) 151.733km/h (7)		14.410 (7) 151.721km/h (7)	
			14.814 (7) 149.160km/h (7)		14.516 (7) 151.515km/h (7)	
			14.323 (3) 152.089km/h (2)			

Poř.	Stč	Jméno	Třída	stroj	Čas	Ztráta
			1. pokus		2. pokus	
			3. pokus		4. pokus	
			5. pokus		6. pokus	
30.	160	CIPERY	I.kat.benzin do obsahu 3500 ccm	BMW M3	14.572	4.276
			15.553 (2) 161.030km/h (1)	14.988 (2) 154.760km/h (1)		
			14.820 (1) 163.997km/h (1)	14.572 (2) 157.676km/h (1)		
			14.905 (2) 155.043km/h (1)			
31.	70	ŠEDIVÝ Petr	I.kat.diesel do obsahu 2500 ccm	Alfa Romeo 156	14.642	4.346
			14.945 (1) 165.475km/h (1)	14.642 (1) 167.506km/h (1)		
			16.012 (1) 113.207km/h (1)	14.925 (1) 164.505km/h (1)		
32.	39	MATOUŠ Jindřich	I.kat.benzin do obsahu 2000 ccm	Opel Kadet	14.658	4.362
			14.911 (2) 151.182km/h (2)	15.112 (2) 147.138km/h (2)		
			14.658 (2) 152.031km/h (2)	14.703 (2) 147.144km/h (2)		
			14.835 (2) 150.382km/h (2)			
33.	120	INDUSTRY CZ	I.kat.diesel do obsahu 2000 ccm	VW Polo	14.920	4.624
			17.118 (5) 160.924km/h (1)	14.920 (4) 163.908km/h (3)		
			15.454 (4) 166.857km/h (1)	15.929 (4) 167.933km/h (1)		
			15.061 (2) 165.629km/h (1)			
34.	144	JANÁČEK Petr	I.kat.diesel do obsahu 3000 ccm	BMW X6	15.088	4.792
			15.336 (7) 146.281km/h (8)	15.088 (8) 147.465km/h (8)		
			15.302 (8) 146.922km/h (8)	15.246 (8) 146.241km/h (8)		
			15.149 (4) 151.054km/h (3)			
35.	44	DRESLER Tomáš	I.kat.benzin obsahu 1400 ccm	Škoda Favorit	15.234	4.938
			15.306 (1) 141.312km/h (1)	15.234 (1) 145.042km/h (1)		
36.	154	KOPRIVA Patrik	I.kat.diesel do obsahu 2000 ccm	Seat Ibiza	15.270	4.974
			16.008 (3) 147.194km/h (5)	16.483 (6) 144.709km/h (5)		
			15.270 (3) 149.705km/h (4)			
37.	115	PETKA	I.kat.benzin do obsahu 1600 ccm	Honda CRX	15.633	5.337
			15.725 (1) 145.982km/h (1)	15.839 (1) 147.768km/h (1)		
			15.879 (1) 146.227km/h (1)	15.958 (1) 144.642km/h (1)		
			15.633 (1) 146.313km/h (1)			
38.	11	POVÝŠIL Lukáš	I.kat.benzin obsahu 1400 ccm	Citroen Saxo	15.726	5.430
			16.304 (2) 130.716km/h (2)	15.900 (2) 132.432km/h (2)		
			15.726 (1) 133.913km/h (1)	15.987 (1) 130.857km/h (2)		
			15.828 (1) 129.911km/h (2)			
133		BŮŽEK Vlastimil	I.kat.benzin do obsahu 2000 ccm	Opel Vectra	15.726	5.430
			16.150 (3) 138.191km/h (3)	16.092 (3) 145.246km/h (3)		
			16.181 (3) 137.325km/h (4)	15.726 (3) 145.051km/h (3)		
			16.346 (3) 143.299km/h (3)			
40.	107	KRISTYE	I.kat.diesel do obsahu 2000 ccm	BMW	15.941	5.645
			16.255 (4) 138.121km/h (6)	16.215 (5) 138.883km/h (6)		
			16.124 (5) 139.785km/h (5)	15.957 (5) 139.421km/h (5)		
			15.941 (3) 140.281km/h (3)			
41.	162	FILIP Šefl	I.kat.benzin do obsahu 3000 ccm	Citroen DS 3	16.177	5.881
			16.473 (3) 135.273km/h (3)	16.370 (3) 133.851km/h (4)		
			16.177 (3) 139.926km/h (3)	16.313 (1) 134.179km/h (2)		
			16.261 (1) 134.515km/h (2)			
42.	136	TOPOR David	I.kat.benzin do obsahu 1600 ccm	Peugeot 106 Rallye	16.230	5.934
			16.445 (2) 137.259km/h (2)	16.385 (2) 134.287km/h (2)		
			16.230 (2) 134.673km/h (2)	19.578 (2) 112.460km/h (2)		
			16.539 (2) 137.063km/h (2)			
43.	121	P.G.	I.kat.diesel do obsahu 3000 ccm	BMW 530D	16.261	5.965
			16.688 (8) 128.053km/h (9)	18.685 (9) 118.635km/h (9)		
			17.793 (9) 127.554km/h (9)	16.365 (9) 131.073km/h (9)		
			16.261 (5) 131.436km/h (5)			
44.	145	LUDVIK CZ	I.kat.Veterán do r.v. 1974 včetně	Opel Kadet C GTE	16.281	5.985
			16.800 (1) 134.659km/h (1)	17.448 (1) 140.043km/h (1)		
			16.281 (1) 138.588km/h (1)	16.532 (1) 138.203km/h (1)		
			16.595 (1) 141.231km/h (1)			
45.	135	PROCHÁZKOVÁ Marcel	I.kat.benzin do obsahu 3000 ccm	Opel Monza	16.299	6.003
			17.225 (5) 131.990km/h (6)	16.661 (4) 136.172km/h (3)		
			16.543 (4) 135.358km/h (4)	17.287 (3) 126.983km/h (4)		
			16.299 (2) 133.560km/h (3)			

Poř.	Stč	Jméno	Třída	stroj	Čas	Ztráta
			1. pokus		2. pokus	
			3. pokus		4. pokus	
			5. pokus		6. pokus	
46.	129	ZIMA Martin	I.kat.benzin do obsahu 3500 ccm	Renault Magene Cabri	16.318	6.022
			16.572 (3) 137.098km/h (3)	16.344 (3) 138.230km/h (3)		
			16.568 (3) 137.612km/h (3)	16.333 (3) 139.938km/h (3)		
			16.318 (3) 140.598km/h (3)			
47.	130	WISKY	I.kat.benzin do obsahu 2500 ccm	BMW 320i	16.445	6.149
			16.721 (1) 128.418km/h (2)	17.107 (1) 134.976km/h (1)		
			17.222 (1) 133.067km/h (1)	16.493 (1) 131.637km/h (1)		
			16.445 (1) 131.063km/h (1)			
48.	152	FERRY	I.kat.benzin do obsahu 3000 ccm	VW Passat	16.665	6.369
			17.048 (4) 132.270km/h (5)	16.907 (5) 133.041km/h (5)		
			16.985 (5) 133.016km/h (5)	16.754 (2) 137.132km/h (1)		
			16.665 (3) 137.924km/h (1)			
49.	146	JELEN	I.kat.benzin do obsahu 2000 ccm	BMW E34	16.684	6.388
			17.433 (6) 136.165km/h (4)	17.415 (6) 131.536km/h (5)		
			16.684 (4) 138.035km/h (3)	16.851 (4) 138.410km/h (4)		
			16.835 (5) 139.561km/h (4)			
50.	128	KUBAJZ	I.kat.benzin do obsahu 2000 ccm	BMW E36	16.732	6.436
			16.732 (4) 133.714km/h (5)			
51.	96	PEDRO	I.kat.benzin do obsahu 2000 ccm	Citreon Xsara	16.760	6.464
			17.093 (5) 132.491km/h (6)	17.260 (5) 128.463km/h (6)		
			17.057 (5) 130.850km/h (5)	17.055 (5) 129.321km/h (5)		
			16.760 (4) 134.610km/h (5)			
52.	138	GOLFI	I.kat.benzin obsahu 1400 ccm	Honda Civic	16.796	6.500
			16.796 (3) 130.012km/h (3)	16.865 (3) 130.672km/h (3)		
			16.900 (2) 133.451km/h (2)	16.878 (2) 129.382km/h (3)		
			17.030 (2) 132.529km/h (1)			
53.	137	PUNKERKA	I.kat.benzin obsahu 1400 ccm	Honda Civic	16.919	6.623
			16.986 (4) 128.079km/h (4)	17.195 (4) 128.697km/h (4)		
			17.007 (3) 128.053km/h (4)	16.919 (3) 131.139km/h (1)		
			17.171 (3) 124.733km/h (3)			
54.	118	PAWLUSHKA	I.kat.benzin do obsahu 2000 ccm	Hyundai Coupe Igen.	16.922	6.626
			17.697 (7) 123.699km/h (7)	16.922 (4) 133.522km/h (4)		
			17.634 (6) 129.560km/h (6)	17.154 (6) 127.905km/h (6)		
			17.005 (6) 128.337km/h (6)			
55.	124	LONGER	II.kat.benzin do 2000 ccm	Škoda 130	16.931	6.635
			16.931 (2) 126.736km/h (2)	17.279 (2) 123.334km/h (4)		
			17.167 (2) 124.871km/h (3)			
56.	117	LAFY	I.kat.benzin obsahu 1400 ccm	Honda Civic	17.008	6.712
			17.415 (5) 127.703km/h (5)	17.295 (5) 124.037km/h (5)		
			17.277 (4) 128.283km/h (3)	17.008 (4) 124.114km/h (4)		
			17.219 (4) 124.458km/h (4)			
57.	123	ROŠTÁK	I.kat.benzin do obsahu 3000 ccm	BMW 328i	17.199	6.903
			17.426 (6) 133.626km/h (4)	17.252 (6) 131.071km/h (6)		
			17.199 (6) 131.731km/h (6)	17.550 (4) 128.273km/h (3)		
			17.565 (4) 129.078km/h (4)			
58.	122	HEMZÁČEK David	II.kat.benzin do 2000 ccm	Lotus 7	17.210	6.914
			18.445 (5) 117.308km/h (5)	17.363 (3) 120.208km/h (5)		
			17.210 (3) 124.220km/h (4)	17.460 (2) 120.488km/h (4)		
			17.367 (2) 121.861km/h (3)			
59.	142	DAVE	II.kat.benzin do 2000 ccm	Renault 19	17.421	7.125
			17.868 (4) 120.280km/h (3)	17.421 (4) 124.212km/h (2)		
			17.541 (5) 123.180km/h (5)	17.524 (3) 122.738km/h (2)		
			17.665 (4) 121.344km/h (4)			
60.	141	LEMBO	I.kat.benzin do obsahu 2500 ccm	BMW 525 E34	17.441	7.145
			17.441 (2) 131.167km/h (1)	17.511 (2) 128.968km/h (2)		
			17.514 (2) 126.842km/h (2)			
61.	114	SIRYO Taras	II.kat.benzin do 2000 ccm	BMW 318i	17.466	7.170
			17.842 (3) 118.948km/h (4)	17.655 (5) 124.187km/h (3)		
			17.466 (4) 125.303km/h (2)	17.717 (4) 121.252km/h (3)		
			17.582 (3) 124.204km/h (2)			

Poř.	Stč	Jméno	Třída	stroj	Čas	Ztráta
			1. pokus		2. pokus	
			3. pokus		4. pokus	
			5. pokus		6. pokus	
62.	158	JAROSLAV Jelínek	I.kat.benzin obsahu 1400 ccm	Mitsubishi Colt 1300	17.743	7.447
			17.780 (6) 116.211km/h (7)		17.800 (6) 112.529km/h (7)	
			17.849 (5) 121.736km/h (5)		17.972 (5) 118.218km/h (5)	
			17.743 (5) 119.969km/h (5)			
63.	161	BARG	I.kat.diesel do obsahu 2000 ccm	VW Pasat	18.577	8.281
			18.577 (7) 122.845km/h (7)		19.314 (7) 119.632km/h (7)	
			19.708 (7) 123.101km/h (6)			
64.	131	ANET	I.kat.benzin obsahu 1400 ccm	Seat	18.685	8.389
			19.398 (8) 118.243km/h (6)		19.228 (8) 115.081km/h (6)	
			18.685 (6) 120.987km/h (6)		19.002 (6) 116.462km/h (6)	
			19.373 (6) 114.625km/h (6)			
65.	140	TOCMYK	I.kat.benzin do obsahu 2000 ccm	Ford Mondeo Combi	19.003	8.707
			19.003 (8) 116.108km/h (8)		20.457 (7) 101.145km/h (7)	
			19.970 (7) 111.197km/h (7)		19.824 (7) 108.291km/h (7)	
66.	103	STEJSKAL Viktor	I.kat.benzin obsahu 1400 ccm	Peugeot 206	19.178	8.882
			19.221 (7) 109.628km/h (8)		19.179 (7) 111.059km/h (8)	
			19.178 (7) 109.070km/h (7)		19.720 (7) 107.922km/h (7)	
			19.730 (7) 106.639km/h (7)			
67.	157	WOWO	I.kat.benzin do obsahu 1600 ccm	Opel Astra	20.580	10.284
			21.238 (3) 101.803km/h (3)		20.580 (3) 102.838km/h (3)	
			20.603 (3) 102.679km/h (3)			
68.	125	JARDA	I.kat.Veterán do r.v. 1974 včetně	Trabant 601 Combi	24.214	13.918
			24.214 (2) 85.103km/h (2)		25.340 (2) 84.912km/h (2)	
			26.738 (2) 83.127km/h (2)			

DNF 101 DUŠAN II.kat.benzin nad 2000 ccm Škoda 420 RSA Na startu

Přihlášeno 69
 Startovalo 69
 Klasifikováno 68

I.kat.benzin obsahu 1400 ccm

Poř.	Stč	Jméno	Třída	stroj	Čas	Ztráta
			1. pokus		2. pokus	
			3. pokus		4. pokus	
			5. pokus		6. pokus	
1.	44	DRESLER Tomáš	I.kat.benzin obsahu 1400 ccm	Škoda Favorit	15.234	
			15.306 (1) 141.312km/h (1)		15.234 (1) 145.042km/h (1)	
2.	11	POVÝŠIL Lukáš	I.kat.benzin obsahu 1400 ccm	Citroen Saxo	15.726	0.492
			16.304 (2) 130.716km/h (2)		15.900 (2) 132.432km/h (2)	
			15.726 (1) 133.913km/h (1)		15.987 (1) 130.857km/h (2)	
			15.828 (1) 129.914km/h (2)			
3.	138	GOLFI	I.kat.benzin obsahu 1400 ccm	Honda Civic	16.796	1.562
			16.796 (3) 130.012km/h (3)		16.865 (3) 130.672km/h (3)	
			16.900 (2) 133.451km/h (2)		16.878 (2) 129.382km/h (3)	
			17.030 (2) 132.529km/h (1)			
4.	137	PUNKERKA	I.kat.benzin obsahu 1400 ccm	Honda Civic	16.919	1.685
			16.986 (4) 128.079km/h (4)		17.195 (4) 128.697km/h (4)	
			17.007 (3) 128.053km/h (4)		16.919 (3) 131.139km/h (1)	
			17.171 (3) 124.733km/h (3)			
5.	117	LAFY	I.kat.benzin obsahu 1400 ccm	Honda Civic	17.008	1.774
			17.415 (5) 127.703km/h (5)		17.295 (5) 124.037km/h (5)	
			17.277 (4) 128.283km/h (3)		17.008 (4) 124.114km/h (4)	
			17.219 (4) 124.458km/h (4)			

Poř.	Stč	Jméno	Třída	stroj	Čas	Ztráta
			1. pokus		2. pokus	
			3. pokus		4. pokus	
			5. pokus		6. pokus	
6.	158	JAROSLAV Jelínek	I.kat.benzin obsahu 1400 ccm	Mitsubishi Colt 1300	17.743	2.509
			17.780 (6) 116.211km/h (7)		17.800 (6) 112.529km/h (7)	
			17.849 (5) 121.736km/h (5)		17.972 (5) 118.218km/h (5)	
			17.743 (5) 119.969km/h (5)			
7.	131	ANET	I.kat.benzin obsahu 1400 ccm	Seat	18.685	3.451
			19.398 (8) 118.243km/h (6)		19.228 (8) 115.081km/h (6)	
			18.685 (6) 120.987km/h (6)		19.002 (6) 116.462km/h (6)	
			19.373 (6) 114.625km/h (6)			
8.	103	STEJSKAL Viktor	I.kat.benzin obsahu 1400 ccm	Peugeot 206	19.178	3.944
			19.221 (7) 109.628km/h (8)		19.179 (7) 111.059km/h (8)	
			19.178 (7) 109.070km/h (7)		19.720 (7) 107.922km/h (7)	
			19.730 (7) 106.639km/h (7)			

Přihlášeno 8

Startovalo 8

Klasifikováno 8

I.kat.benzin do obsahu 1600 ccm

Poř.	Stč	Jméno	Třída	stroj	Čas	Ztráta
			1. pokus		2. pokus	
			3. pokus		4. pokus	
			5. pokus		6. pokus	
1.	115	PETKA	I.kat.benzin do obsahu 1600 ccm	Honda CRX	15.633	
			15.725 (1) 145.982km/h (1)		15.839 (1) 147.768km/h (1)	
			15.879 (1) 146.227km/h (1)		15.958 (1) 144.642km/h (1)	
			15.633 (1) 146.313km/h (1)			
2.	136	TOPOR David	I.kat.benzin do obsahu 1600 ccm	Peugeot 106 Rallye	16.230	0.597
			16.445 (2) 137.259km/h (2)		16.385 (2) 134.287km/h (2)	
			16.230 (2) 134.673km/h (2)		19.578 (2) 112.460km/h (2)	
			16.539 (2) 137.063km/h (2)			
3.	157	WOWO	I.kat.benzin do obsahu 1600 ccm	Opel Astra	20.580	4.947
			21.238 (3) 101.863km/h (3)		20.580 (3) 102.838km/h (3)	
			20.603 (3) 102.679km/h (3)			

Přihlášeno 3

Startovalo 3

Klasifikováno 3

I.kat.benzin do obsahu 2000 ccm

Poř.	Stč	Jméno	Třída	stroj	Čas	Ztráta
			1. pokus		2. pokus	
			3. pokus		4. pokus	
			5. pokus		6. pokus	
1.	8	PARY	I.kat.benzin do obsahu 2000 ccm	Nissan Sunny	14.239	
			14.534 (1) 152.976km/h (1)		14.305 (1) 154.514km/h (1)	
			14.239 (1) 154.698km/h (1)		14.451 (1) 158.173km/h (1)	
			14.519 (1) 152.542km/h (1)			
2.	39	MATOUŠ Jindřich	I.kat.benzin do obsahu 2000 ccm	Opel Kadet	14.658	0.419
			14.911 (2) 151.182km/h (2)		15.112 (2) 147.138km/h (2)	
			14.658 (2) 152.031km/h (2)		14.703 (2) 147.144km/h (2)	
			14.835 (2) 150.382km/h (2)			
3.	133	BŮŽEK Vlastimil	I.kat.benzin do obsahu 2000 ccm	Opel Vectra	15.726	1.487
			16.150 (3) 138.191km/h (3)		16.092 (3) 145.246km/h (3)	
			16.181 (3) 137.325km/h (4)		15.726 (3) 145.051km/h (3)	
			16.346 (3) 143.299km/h (3)			

Poř.	Stč	Jméno	Třída	stroj	Čas	Ztráta
			1. pokus		2. pokus	
			3. pokus		4. pokus	
			5. pokus		6. pokus	
4.	146	JELEN	I.kat.benzin do obsahu 2000 ccm BMW E34		16.684	2.445
			17.433 (6) 136.165km/h (4)	17.415 (6) 131.536km/h (5)		
			16.684 (4) 138.035km/h (3)	16.851 (4) 138.410km/h (4)		
			16.835 (5) 139.561km/h (4)			
5.	128	KUBAJZ	I.kat.benzin do obsahu 2000 ccm BMW E36		16.732	2.493
			16.732 (4) 133.714km/h (5)			
6.	96	PEDRO	I.kat.benzin do obsahu 2000 ccm Citreon Xsara		16.760	2.521
			17.093 (5) 132.491km/h (6)	17.260 (5) 128.463km/h (6)		
			17.057 (5) 130.850km/h (5)	17.055 (5) 129.321km/h (5)		
			16.760 (4) 134.610km/h (5)			
7.	118	PAWLUSHKA	I.kat.benzin do obsahu 2000 ccm Hyundai Coupe Igen.		16.922	2.683
			17.697 (7) 123.699km/h (7)	16.922 (4) 133.522km/h (4)		
			17.634 (6) 129.560km/h (6)	17.154 (6) 127.905km/h (6)		
			17.005 (6) 128.337km/h (6)			
8.	140	TOCMYK	I.kat.benzin do obsahu 2000 ccm Ford Mondeo Combi		19.003	4.764
			19.003 (8) 116.108km/h (8)	20.457 (7) 101.145km/h (7)		
			19.970 (7) 111.197km/h (7)	19.824 (7) 108.291km/h (7)		

Přihlášeno 8

Startovalo 8

Klasifikováno 8

I.kat.benzin do obsahu 2500 ccm

Poř.	Stč	Jméno	Třída	stroj	Čas	Ztráta
			1. pokus		2. pokus	
			3. pokus		4. pokus	
			5. pokus		6. pokus	
1.	130	WISKY	I.kat.benzin do obsahu 2500 ccm BMW 320i		16.445	
			16.721 (1) 128.418km/h (2)	17.107 (1) 134.976km/h (1)		
			17.222 (1) 133.067km/h (1)	16.493 (1) 131.637km/h (1)		
			16.445 (1) 131.063km/h (1)			
2.	141	LEMBO	I.kat.benzin do obsahu 2500 ccm BMW 525 E34		17.441	0.996
			17.441 (2) 131.167km/h (1)	17.511 (2) 128.968km/h (2)		
			17.514 (2) 126.842km/h (2)			

Přihlášeno 2

Startovalo 2

Klasifikováno 2

I.kat.benzin do obsahu 3000 ccm

Poř.	Stč	Jméno	Třída	stroj	Čas	Ztráta
			1. pokus		2. pokus	
			3. pokus		4. pokus	
			5. pokus		6. pokus	
1.	38	HORÁK Jan	I.kat.benzin do obsahu 3000 ccm Opel Kadet 2.0		13.613	
			13.749 (1)	168.624km/h (1)	13.909 (1)	168.539km/h (1)
			13.613 (1)	173.803km/h (1)		
2.	73	PRCEK	I.kat.benzin do obsahu 3000 ccm BMW M3		14.171	0.558
			14.712 (2)	162.288km/h (2)	14.171 (2)	164.644km/h (2)
			14.297 (2)	159.719km/h (2)		
3.	162	FILIP Šefl	I.kat.benzin do obsahu 3000 ccm Citroen DS 3		16.177	2.564
			16.473 (3)	135.273km/h (3)	16.370 (3)	133.851km/h (4)
			16.177 (3)	139.926km/h (3)	16.313 (1)	134.179km/h (2)
			16.261 (1)	134.515km/h (2)		
4.	135	PROCHÁZKOVÁ Marcel	I.kat.benzin do obsahu 3000 ccm Opel Monza		16.299	2.686
			17.225 (5)	131.990km/h (6)	16.661 (4)	136.172km/h (3)
			16.543 (4)	135.358km/h (4)	17.287 (3)	126.983km/h (4)
			16.299 (2)	133.560km/h (3)		
5.	152	FERRY	I.kat.benzin do obsahu 3000 ccm VW Passat		16.665	3.052
			17.048 (4)	132.270km/h (5)	16.907 (5)	133.041km/h (5)
			16.985 (5)	133.016km/h (5)	16.754 (2)	137.132km/h (1)
			16.665 (3)	137.924km/h (1)		
6.	123	ROŠŤÁK	I.kat.benzin do obsahu 3000 ccm BMW 328i		17.199	3.586
			17.426 (6)	133.626km/h (4)	17.252 (6)	131.071km/h (6)
			17.199 (6)	131.731km/h (6)	17.550 (4)	128.273km/h (3)
			17.565 (4)	129.078km/h (4)		

Přihlášeno 6

Startovalo 6

Klasifikováno 6

I.kat.benzin do obsahu 3500 ccm

Poř.	Stč	Jméno	Třída	stroj	Čas	Ztráta
			1. pokus		2. pokus	
			3. pokus		4. pokus	
			5. pokus		6. pokus	
1.	132	STRAČENKA	I.kat.benzin do obsahu 3500 ccm Subaru Impreza WRX		14.201	
			15.421 (1)	144.497km/h (2)	14.469 (1)	152.099km/h (2)
			15.130 (2)	151.653km/h (2)	14.201 (1)	147.755km/h (2)
			14.379 (1)	148.262km/h (2)		
2.	160	CIPERY	I.kat.benzin do obsahu 3500 ccm BMW M3		14.572	0.371
			15.553 (2)	161.030km/h (1)	14.988 (2)	154.760km/h (1)
			14.820 (1)	163.997km/h (1)	14.572 (2)	157.676km/h (1)
			14.905 (2)	155.043km/h (1)		
3.	129	ZIMA Martin	I.kat.benzin do obsahu 3500 ccm Renault Magene Cabri		16.318	2.117
			16.572 (3)	137.098km/h (3)	16.344 (3)	138.230km/h (3)
			16.568 (3)	137.612km/h (3)	16.333 (3)	139.938km/h (3)
			16.318 (3)	140.598km/h (3)		

Přihlášeno 3

Startovalo 3

Klasifikováno 3

I.kat.benzin do obsahu 4000 ccm

Poř.	Stč	Jméno	Třída	stroj	Čas	Ztráta
			1. pokus		2. pokus	
			3. pokus		4. pokus	
			5. pokus		6. pokus	
1.	127	DKOUBIC	I.kat.benzin do obsahu 4000 ccm BMW 340i		13.511	
			13.774 (1)	169.314km/h (1)	13.803 (1)	174.916km/h (1)
			14.083 (2)	168.356km/h (1)	13.511 (1)	176.248km/h (1)
			13.713 (1)	176.941km/h (1)		
2.	45	ŠVARC Jakub	I.kat.benzin do obsahu 4000 ccm Nissan 370Z		13.901	0.390
			14.009 (2)	161.576km/h (2)	14.140 (2)	160.293km/h (2)
			13.901 (1)	158.789km/h (2)	14.975 (2)	154.296km/h (2)
			13.951 (2)	164.933km/h (2)		

Přihlášeno 2
 Startovalo 2
 Klasifikováno 2

I.kat.benzin nad obsah 4000 ccm

Poř.	Stč	Jméno	Třída	stroj	Čas	Ztráta
			1. pokus		2. pokus	
			3. pokus		4. pokus	
			5. pokus		6. pokus	
1.	10	TOM	I.kat.benzin nad obsah 4000 ccm Nissan GTR		10.296	
			10.296 (1)	227.660km/h (1)	11.478 (3)	209.961km/h (1)
			11.575 (2)	212.499km/h (1)		
2.	163	TOMÁŠ	I.kat.benzin nad obsah 4000 ccm Nissan GT-R		11.180	0.884
			11.238 (2)	203.599km/h (2)	11.180 (1)	202.198km/h (2)
3.	148	PEPA	I.kat.benzin nad obsah 4000 ccm Porsche Carrera 911		11.236	0.940
			12.062 (3)	192.895km/h (3)	11.454 (2)	194.963km/h (3)
			11.329 (1)	195.357km/h (2)	11.236 (1)	195.434km/h (1)
4.	126	LÁDÍK	I.kat.benzin nad obsah 4000 ccm BMW 335i		13.150	2.854
			13.339 (4)	172.380km/h (4)	13.280 (4)	176.533km/h (4)
			13.218 (3)	172.269km/h (4)	13.287 (2)	171.575km/h (3)
			13.150 (1)	172.854km/h (1)		
5.	143	BOČEK	I.kat.benzin nad obsah 4000 ccm EEP SRT8		13.329	3.033
			13.882 (6)	156.133km/h (6)	13.470 (5)	160.956km/h (6)
			13.390 (4)	161.283km/h (5)	13.329 (3)	165.488km/h (4)
			13.412 (2)	165.169km/h (2)		
6.	147	MAŠEK Jiří	I.kat.benzin nad obsah 4000 ccm Lexus ISF		13.492	3.196
			13.656 (5)	171.080km/h (5)	13.496 (6)	172.997km/h (5)
			13.533 (5)	172.467km/h (3)	13.492 (4)	173.740km/h (2)

Přihlášeno 6
 Startovalo 6
 Klasifikováno 6

I.kat.diesel do obsahu 2000 ccm

Poř.	Stč	Jméno	Třída		stroj	Čas		Ztráta
			1. pokus	3. pokus		2. pokus	4. pokus	
1.	49	TOM Chipforum	I.kat.diesel do obsahu 2000 ccm		Seat Leon 4	13.211		
			13.603 (1)	156.550km/h (3)		13.283 (1)	165.881km/h (1)	
			17.747 (6)	102.375km/h (7)		13.211 (1)	166.116km/h (2)	
2.	48	PETR Chipforum	I.kat.diesel do obsahu 2000 ccm		Škoda Octavia	13.484		0.273
			18.007 (6)	151.120km/h (4)		13.627 (2)	165.219km/h (2)	
			13.484 (1)	165.833km/h (2)		13.683 (3)	158.031km/h (4)	
3.	119	TDI Drápek	I.kat.diesel do obsahu 2000 ccm		VW Golf	13.629		0.418
			13.745 (2)	158.246km/h (2)		13.859 (3)	162.809km/h (4)	
			13.789 (2)	158.807km/h (3)		13.629 (2)	159.551km/h (3)	
			13.708 (1)	158.557km/h (2)				
4.	120	INDUSTRY CZ	I.kat.diesel do obsahu 2000 ccm		VW Polo	14.920		1.709
			17.118 (5)	160.924km/h (1)		14.920 (4)	163.908km/h (3)	
			15.454 (4)	166.857km/h (1)		15.929 (4)	167.933km/h (1)	
			15.061 (2)	165.029km/h (1)				
5.	154	KOPRIVA Patrik	I.kat.diesel do obsahu 2000 ccm		Seat Ibiza	15.270		2.059
			16.008 (3)	147.194km/h (5)		16.483 (6)	144.709km/h (5)	
			15.270 (3)	149.705km/h (4)				
6.	107	KRISTYE	I.kat.diesel do obsahu 2000 ccm		BMW	15.941		2.730
			16.255 (4)	138.121km/h (6)		16.215 (5)	138.883km/h (6)	
			16.124 (5)	139.785km/h (5)		15.957 (5)	139.421km/h (5)	
			15.941 (3)	140.281km/h (3)				
7.	161	BARG	I.kat.diesel do obsahu 2000 ccm		VW Pasat	18.577		5.366
			18.577 (7)	122.845km/h (7)		19.314 (7)	119.632km/h (7)	
			19.708 (7)	123.101km/h (6)				

Přihlášeno 7

Startovalo 7

Klasifikováno 7

I.kat.diesel do obsahu 2500 ccm

Poř.	Stč	Jméno	Třída		stroj	Čas		Ztráta
			1. pokus	3. pokus		2. pokus	4. pokus	
1.	70	ŠEDIVÝ Petr	I.kat.diesel do obsahu 2500 ccm		Alfa Romeo 156	14.642		
			14.945 (1)	165.475km/h (1)		14.642 (1)	167.506km/h (1)	
			16.012 (1)	113.207km/h (1)		14.925 (1)	164.505km/h (1)	

Přihlášeno 1

Startovalo 1

Klasifikováno 1

I.kat.diesel do obsahu 3000 ccm

Poř.	Stč	Jméno	Třída		stroj	Čas		Ztráta
			1. pokus	3. pokus		2. pokus	4. pokus	
1.	151	KREPSÍK	I.kat.diesel do obsahu 3000 ccm		BMW 435 XD	13.072		
			13.129 (1)	168.279km/h (2)	13.450 (1)	165.175km/h (2)		
			13.264 (1)	164.673km/h (4)	13.072 (1)	164.869km/h (4)		
2.	77	INDI TDI Garage	I.kat.diesel do obsahu 3000 ccm		Audi A40 30TDi	13.359		0.287
			13.662 (2)	160.612km/h (3)	13.516 (2)	166.570km/h (1)		
			13.492 (4)	165.073km/h (3)	13.359 (2)	166.919km/h (2)		
3.	155	DANDY	I.kat.diesel do obsahu 3000 ccm		Audi A5	13.482		0.410
			13.855 (3)	158.668km/h (4)	13.579 (3)	164.840km/h (3)		
			13.482 (2)	165.787km/h (2)	13.487 (3)	165.425km/h (3)		
4.	139	MARTIN Zima	I.kat.diesel do obsahu 3000 ccm		BMW 335D	13.484		0.412
			13.912 (4)	168.533km/h (1)	14.023 (5)	162.903km/h (4)		
			13.484 (3)	169.010km/h (1)	13.623 (4)	168.255km/h (1)		
5.	149	LUKÁŠ Kmoníček	I.kat.diesel do obsahu 3000 ccm		BMW 535 XD	13.817		0.745
			13.932 (5)	156.869km/h (5)	13.989 (4)	158.052km/h (5)		
			13.881 (5)	158.613km/h (5)	13.882 (5)	154.529km/h (6)		
			13.817 (1)	158.637km/h (1)				
6.	156	FILIP	I.kat.diesel do obsahu 3000 ccm		BMW 330	14.266		1.194
			17.011 (9)	155.289km/h (6)	14.368 (6)	157.718km/h (6)		
			14.438 (6)	158.593km/h (6)	14.495 (6)	156.936km/h (5)		
			14.266 (2)	149.563km/h (4)				
7.	102	COOKY	I.kat.diesel do obsahu 3000 ccm		BMW	14.323		1.251
			14.326 (6)	151.733km/h (7)	14.410 (7)	151.721km/h (7)		
			14.814 (7)	149.160km/h (7)	14.516 (7)	151.515km/h (7)		
			14.323 (3)	152.089km/h (2)				
8.	144	JANÁČEK Petr	I.kat.diesel do obsahu 3000 ccm		BMW X6	15.088		2.016
			15.336 (7)	146.281km/h (8)	15.088 (8)	147.465km/h (8)		
			15.302 (8)	146.922km/h (8)	15.246 (8)	146.241km/h (8)		
			15.149 (4)	151.054km/h (3)				
9.	121	P.G.	I.kat.diesel do obsahu 3000 ccm		BMW 530D	16.261		3.189
			16.688 (8)	128.053km/h (9)	16.685 (9)	118.635km/h (9)		
			17.793 (9)	127.554km/h (9)	16.365 (9)	131.073km/h (9)		
			16.261 (5)	131.436km/h (5)				

Přihlášeno 9
 Startovalo 9
 Klasifikováno 9

I.kat.Veterán do r.v. 1974 včetně

Poř.	Stč	Jméno	Třída		stroj	Čas		Ztráta
			1. pokus	3. pokus		2. pokus	4. pokus	
1.	145	LUDVIK CZ	I.kat.Veterán do r.v. 1974 včetně		Opel Kadet C GTE	16.281		
			16.800 (1)	134.659km/h (1)	17.448 (1)	140.043km/h (1)		
			16.281 (1)	138.588km/h (1)	16.532 (1)	138.203km/h (1)		
			16.595 (1)	141.231km/h (1)				
2.	125	JARDA	I.kat.Veterán do r.v. 1974 včetně		Trabant 601 Combi	24.214		7.933
			24.214 (2)	85.103km/h (2)	25.340 (2)	84.912km/h (2)		
			26.738 (2)	83.127km/h (2)				

Přihlášeno 2
 Startovalo 2
 Klasifikováno 2

II.kat.benzin do 2000 ccm

Poř.	Stč	Jméno	Třída 1. pokus 3. pokus 5. pokus	stroj	Čas 2. pokus 4. pokus 6. pokus	Ztráta
1.	106	MAŠÍ	II.kat.benzin do 2000 ccm 13.312(1) 167.912km/h (1) 12.950(1) 168.028km/h (1) 13.260(1) 169.071km/h (1)	Audi S3	12.908 (1) 170.361km/h (1) 14.007 (1) 160.331km/h (1) 12.908	
2.	124	LONGER	II.kat.benzin do 2000 ccm 16.931(2) 126.736km/h (2) 17.167(2) 124.671km/h (3)	Škoda 130	17.279 (2) 129.334km/h (4) 16.931	4.023
3.	122	HEMZÁČEK David	II.kat.benzin do 2000 ccm 18.445(5) 117.308km/h (5) 17.210(3) 124.220km/h (4) 17.367(2) 121.861km/h (3)	Lotus 7	17.363 (3) 120.208km/h (5) 17.460 (2) 120.488km/h (4) 17.210	4.302
4.	142	DAVE	II.kat.benzin do 2000 ccm 17.868(4) 120.280km/h (3) 17.541(5) 123.180km/h (5) 17.665(4) 121.344km/h (4)	Renault 19	17.421 (4) 124.212km/h (2) 17.524 (3) 122.738km/h (2) 17.421	4.513
5.	114	SIRYO Taras	II.kat.benzin do 2000 ccm 17.842(3) 118.948km/h (4) 17.466(4) 125.303km/h (2) 17.582(3) 124.204km/h (2)	BMW 318i	17.655 (5) 124.187km/h (3) 17.717 (4) 121.252km/h (3) 17.466	4.558

Přihlášeno 5
Startovalo 5
Klasifikováno 5

II.kat.benzin nad 2000 ccm

Poř.	Stč	Jméno	Třída 1. pokus 3. pokus 5. pokus	stroj	Čas 2. pokus 4. pokus 6. pokus	Ztráta
1.	105	TOULA Jiří	II.kat.benzin nad 2000 ccm 14.381(1) 165.805km/h (1) 13.915(1) 167.798km/h (1) 13.679(1) 170.128km/h (1)	Brouk	14.265 (1) 165.219km/h (1) 13.853 (1) 159.671km/h (1) 13.679	
2.	134	BARTÁČEK Jan	II.kat.benzin nad 2000 ccm 14.781(2) 159.994km/h (2) 14.138(2) 166.354km/h (2) 14.209(2) 166.595km/h (2)	Seat Ibiza	14.487 (2) 160.039km/h (2) 15.360 (2) 157.273km/h (2) 14.138	0.459

Přihlášeno 3
Startovalo 3
Klasifikováno 2

II.kat.Diesel do 2000 ccm

Poř.	Stč	Jméno	Třída	stroj	Čas	Ztráta
			1. pokus		2. pokus	
			3. pokus		4. pokus	
			5. pokus		6. pokus	
1.	116	FRIC Michal	II.kat.Diesel do 2000 ccm	WV Golf II	14.279	
			15.277 (1) 113.453km/h (1)		14.279 (1) 154.086km/h (1)	
			15.006 (1) 151.252km/h (1)		14.702 (1) 147.379km/h (1)	
			14.563 (1) 153.532km/h (1)			

Přihlášeno 1
 Startovalo 1
 Klasifikováno 1

MOTOCYKL do 600 ccm

Poř.	Stč	Jméno	Třída	stroj	Čas	Ztráta
			1. pokus		2. pokus	
			3. pokus		4. pokus	
			5. pokus		6. pokus	
1.	153	ČERVENKA Petr	MOTOCYKL do 600 ccm	Honda CBR 600F	12.612	
			12.730 (1) 162.153km/h (1)		12.612 (1) 167.593km/h (1)	
			12.635 (1) 171.657km/h (1)		13.922 (1) 153.772km/h (1)	
			13.354 (1) 158.898km/h (1)			

Přihlášeno 1
 Startovalo 1
 Klasifikováno 1

MOTOCYKL do 1000 ccm

Poř.	Stč	Jméno	Třída	stroj	Čas	Ztráta
			1. pokus		2. pokus	
			3. pokus		4. pokus	
			5. pokus		6. pokus	
1.	159	BORY	MOTOCYKL do 1000 ccm	Yamaha RN16	11.126	
			12.420 (2) 191.810km/h (1)		11.126 (1) 213.919km/h (1)	
			11.167 (2) 206.114km/h (2)			
2.	46	MIREC	MOTOCYKL do 1000 ccm	Honda CBR Fireblade	11.128	0.002
			11.244 (1) 185.061km/h (2)		11.179 (2) 203.280km/h (2)	
			11.128 (1) 208.104km/h (1)		11.157 (1) 206.694km/h (1)	
			11.405 (1) 175.547km/h (1)			

Přihlášeno 2
 Startovalo 2
 Klasifikováno 2

Kategorie I - cestovní vozy

Poř.	Stč	Jméno	Třída	stroj	Čas	Ztráta
			1. pokus		2. pokus	
			3. pokus		4. pokus	
			5. pokus		6. pokus	
1.	10	TOM	I.kat.benzin nad obsah 4000 ccm Nissan GTR		10.296	
			10.296(1) 227.660km/h (1)	11.478(3) 209.961km/h (1)		
			11.575(2) 212.499km/h (1)			
2.	163	TOMÁŠ	I.kat.benzin nad obsah 4000 ccm Nissan GT-R		11.180	0.884
			11.238(2) 203.599km/h (2)	11.180(1) 202.198km/h (2)		
3.	148	PEPA	I.kat.benzin nad obsah 4000 ccm Porsche Carrera 911		11.236	0.940
			12.062(3) 192.895km/h (3)	11.454(2) 194.963km/h (3)		
			11.329(1) 195.357km/h (2)	11.236(1) 195.434km/h (1)		
4.	151	KREPSÍK	I.kat.diesel do obsahu 3000 ccm BMW 435 XD		13.072	2.776
			13.129(1) 168.279km/h (2)	13.450(1) 165.175km/h (2)		
			13.264(1) 164.673km/h (4)	13.072(1) 164.869km/h (4)		
5.	126	LÁDÍK	I.kat.benzin nad obsah 4000 ccm BMW 335i		13.150	2.854
			13.339(4) 172.380km/h (4)	13.280(4) 176.533km/h (4)		
			13.218(3) 172.269km/h (4)	13.287(2) 171.575km/h (3)		
			13.150(1) 172.854km/h (1)			
6.	49	TOM Chipforum	I.kat.diesel do obsahu 2000 ccm Seat Leon 4		13.211	2.915
			13.603(1) 156.550km/h (3)	13.283(1) 165.881km/h (1)		
			17.747(6) 102.375km/h (7)	13.211(1) 166.116km/h (2)		
7.	143	BOČEK	I.kat.benzin nad obsah 4000 ccm EEP SRT8		13.329	3.033
			13.882(6) 156.133km/h (6)	13.470(5) 160.956km/h (6)		
			13.390(4) 161.283km/h (5)	13.329(3) 165.488km/h (4)		
			13.412(2) 165.169km/h (2)			
8.	77	INDI TDI Garage	I.kat.diesel do obsahu 3000 ccm Audi A40 30TDi		13.359	3.063
			13.662(2) 160.612km/h (3)	13.516(2) 166.570km/h (1)		
			13.492(4) 165.073km/h (3)	13.359(2) 166.919km/h (2)		
9.	155	DANDY	I.kat.diesel do obsahu 3000 ccm Audi A5		13.482	3.186
			13.855(3) 158.668km/h (4)	13.579(3) 164.840km/h (3)		
			13.482(2) 165.787km/h (2)	13.487(3) 165.425km/h (3)		
10.	48	PETR Chipforum	I.kat.diesel do obsahu 2000 ccm Škoda Octavia		13.484	3.188
			18.007(6) 151.120km/h (4)	13.627(2) 165.219km/h (2)		
			13.484(1) 165.833km/h (2)	13.683(3) 156.031km/h (4)		
139	MARTIN Zima		I.kat.diesel do obsahu 3000 ccm BMW 335D		13.484	3.188
			13.912(4) 168.533km/h (1)	14.023(5) 162.903km/h (4)		
			13.484(3) 169.010km/h (1)	13.623(4) 168.255km/h (1)		
12.	147	MAŠEK Jiří	I.kat.benzin nad obsah 4000 ccm Lexus ISF		13.492	3.196
			13.656(5) 171.080km/h (5)	13.496(6) 172.997km/h (5)		
			13.533(5) 172.467km/h (3)	13.492(4) 173.740km/h (2)		
13.	127	DKOUBIC	I.kat.benzin do obsahu 4000 ccm BMW 340i		13.511	3.215
			13.774(1) 169.314km/h (1)	13.803(1) 174.916km/h (1)		
			14.083(2) 168.356km/h (1)	13.511(1) 176.248km/h (1)		
			13.713(1) 176.941km/h (1)			
14.	38	HORÁK Jan	I.kat.benzin do obsahu 3000 ccm Opel Kadet 2.0		13.613	3.317
			13.749(1) 168.624km/h (1)	13.909(1) 168.539km/h (1)		
			13.613(1) 173.803km/h (1)			
15.	119	TDI Drápek	I.kat.diesel do obsahu 2000 ccm VW Golf		13.629	3.333
			13.745(2) 158.246km/h (2)	13.859(3) 162.809km/h (4)		
			13.789(2) 158.807km/h (3)	13.629(2) 159.551km/h (3)		
			13.708(1) 158.557km/h (2)			

Poř.	Stč	Jméno	Třída	stroj	Čas	Ztráta
			1. pokus		2. pokus	
			3. pokus		4. pokus	
			5. pokus		6. pokus	
16.	149	LUKÁŠ Kmoníček	I.kat.diesel do obsahu 3000 ccm	BMW 535 XD	13.817	3.521
			13.932(5) 156.869km/h (5)	13.989(4) 158.052km/h (5)		
			13.881(5) 158.613km/h (5)	13.882(5) 154.529km/h (6)		
			13.817(1) 158.637km/h (1)			
17.	45	ŠVARC Jakub	I.kat.benzin do obsahu 4000 ccm	Nissan 370Z	13.901	3.605
			14.009(2) 161.576km/h (2)	14.140(2) 160.293km/h (2)		
			13.901(1) 158.789km/h (2)	14.975(2) 154.296km/h (2)		
			13.951(2) 164.933km/h (2)			
18.	73	PRCEK	I.kat.benzin do obsahu 3000 ccm	BMW M3	14.171	3.875
			14.712(2) 162.288km/h (2)	14.171(2) 164.644km/h (2)		
			14.297(2) 159.719km/h (2)			
19.	132	STRAČENKA	I.kat.benzin do obsahu 3500 ccm	Subaru Impreza WRX	14.201	3.905
			15.421(1) 144.497km/h (2)	14.469(1) 152.099km/h (2)		
			15.130(2) 151.653km/h (2)	14.201(1) 147.755km/h (2)		
			14.379(1) 148.262km/h (2)			
20.	8	PARY	I.kat.benzin do obsahu 2000 ccm	Nissan Sunny	14.239	3.943
			14.534(1) 152.976km/h (1)	14.305(1) 154.514km/h (1)		
			14.239(1) 154.698km/h (1)	14.451(1) 158.173km/h (1)		
			14.519(1) 152.542km/h (1)			
21.	156	FILIP	I.kat.diesel do obsahu 3000 ccm	BMW 330	14.266	3.970
			17.011(9) 155.289km/h (6)	14.368(6) 157.718km/h (6)		
			14.438(6) 158.593km/h (6)	14.495(6) 156.936km/h (5)		
			14.266(2) 149.563km/h (4)			
22.	102	COOKY	I.kat.diesel do obsahu 3000 ccm	BMW	14.323	4.027
			14.326(6) 151.733km/h (7)	14.410(7) 151.721km/h (7)		
			14.814(7) 149.160km/h (7)	14.516(7) 151.515km/h (7)		
			14.323(3) 152.089km/h (2)			
23.	160	CIPERY	I.kat.benzin do obsahu 3500 ccm	BMW M3	14.572	4.276
			15.553(2) 161.030km/h (1)	14.988(2) 154.760km/h (1)		
			14.820(1) 163.997km/h (1)	14.572(2) 157.676km/h (1)		
			14.905(2) 155.043km/h (1)			
24.	70	ŠEDIVÝ Petr	I.kat.diesel do obsahu 2500 ccm	Alfa Romeo 156	14.642	4.346
			14.945(1) 165.475km/h (1)	14.642(1) 167.506km/h (1)		
			16.012(1) 113.207km/h (1)	14.925(1) 164.505km/h (1)		
25.	39	MATOUŠ Jindřich	I.kat.benzin do obsahu 2000 ccm	Opel Kadet	14.658	4.362
			14.911(2) 151.182km/h (2)	15.112(2) 147.138km/h (2)		
			14.658(2) 152.031km/h (2)	14.703(2) 147.144km/h (2)		
			14.835(2) 150.382km/h (2)			
26.	120	INDUSTRY CZ	I.kat.diesel do obsahu 2000 ccm	VW Polo	14.920	4.624
			17.118(5) 160.924km/h (1)	14.920(4) 163.908km/h (3)		
			15.454(4) 166.857km/h (1)	15.929(4) 167.933km/h (1)		
			15.061(2) 165.029km/h (1)			
27.	144	JANÁČEK Petr	I.kat.diesel do obsahu 3000 ccm	BMW X6	15.088	4.792
			15.336(7) 146.281km/h (8)	15.088(8) 147.465km/h (8)		
			15.302(8) 146.922km/h (8)	15.246(8) 146.241km/h (8)		
			15.149(4) 151.054km/h (3)			
28.	44	DRESLER Tomáš	I.kat.benzin obsahu 1400 ccm	Škoda Favorit	15.234	4.938
			15.306(1) 141.312km/h (1)	15.234(1) 145.042km/h (1)		
29.	154	KOPRIVA Patrik	I.kat.diesel do obsahu 2000 ccm	Seat Ibiza	15.270	4.974
			16.008(3) 147.194km/h (5)	16.483(6) 144.709km/h (5)		
			15.270(3) 149.705km/h (4)			
30.	115	PETKA	I.kat.benzin do obsahu 1600 ccm	Honda CRX	15.633	5.337
			15.725(1) 145.982km/h (1)	15.839(1) 147.768km/h (1)		
			15.879(1) 146.227km/h (1)	15.958(1) 144.642km/h (1)		
			15.633(1) 146.313km/h (1)			
31.	11	POVÝŠIL Lukáš	I.kat.benzin obsahu 1400 ccm	Citroen Saxo	15.726	5.430
			16.304(2) 130.716km/h (2)	15.900(2) 132.432km/h (2)		
			15.726(1) 133.913km/h (1)	15.987(1) 130.857km/h (2)		
			15.828(1) 129.911km/h (2)			

Poř.	Stč	Jméno	Třída	stroj	Čas	Ztráta
			1. pokus		2. pokus	
			3. pokus		4. pokus	
			5. pokus		6. pokus	
133	BŮŽEK Vlastimil	I.kat.benzin do obsahu 2000 ccm Opel Vectra	16.150 (3) 138.191km/h (3)	16.092 (3) 145.246km/h (3)	15.726	5.430
			16.181 (3) 137.325km/h (4)	15.726 (3) 145.051km/h (3)		
			16.346 (3) 143.299km/h (3)			
33.	107 KRISTYE	I.kat.diesel do obsahu 2000 ccm BMW	16.255 (4) 138.121km/h (6)	16.215 (5) 138.883km/h (6)	15.941	5.645
			16.124 (5) 139.785km/h (5)	15.957 (5) 139.421km/h (5)		
			15.941 (3) 140.281km/h (3)			
34.	162 FILIP Šefl	I.kat.benzin do obsahu 3000 ccm Citroen DS 3	16.473 (3) 135.273km/h (3)	16.370 (3) 133.851km/h (4)	16.177	5.881
			16.177 (3) 139.926km/h (3)	16.313 (1) 134.179km/h (2)		
			16.261 (1) 134.515km/h (2)			
35.	136 TOPOR David	I.kat.benzin do obsahu 1600 ccm Peugeot 106 Rallye	16.445 (2) 137.259km/h (2)	16.385 (2) 134.287km/h (2)	16.230	5.934
			16.230 (2) 134.673km/h (2)	19.578 (2) 112.460km/h (2)		
			16.539 (2) 137.063km/h (2)			
36.	121 P.G.	I.kat.diesel do obsahu 3000 ccm BMW 530D	16.688 (8) 126.053km/h (9)	18.685 (9) 118.635km/h (9)	16.261	5.965
			17.793 (9) 127.554km/h (9)	16.365 (9) 131.073km/h (9)		
			16.261 (5) 131.436km/h (5)			
37.	135 PROCHÁZKOVÁ Marcel	I.kat.benzin do obsahu 3000 ccm Opel Monza	17.225 (5) 131.990km/h (6)	16.661 (4) 136.172km/h (3)	16.299	6.003
			16.543 (4) 135.358km/h (4)	17.287 (3) 126.983km/h (4)		
			16.299 (2) 133.560km/h (3)			
38.	129 ZIMA Martin	I.kat.benzin do obsahu 3500 ccm Renault Magene Cabri	16.572 (3) 137.098km/h (3)	16.344 (3) 138.230km/h (3)	16.318	6.022
			16.568 (3) 137.612km/h (3)	16.333 (3) 139.938km/h (3)		
			16.318 (3) 140.598km/h (3)			
39.	130 WISKY	I.kat.benzin do obsahu 2500 ccm BMW 320i	16.721 (1) 128.418km/h (2)	17.107 (1) 134.976km/h (1)	16.445	6.149
			17.222 (1) 133.067km/h (1)	16.493 (1) 131.637km/h (1)		
			16.445 (1) 131.063km/h (1)			
40.	152 FERRY	I.kat.benzin do obsahu 3000 ccm VW Passat	17.048 (4) 132.270km/h (5)	16.907 (5) 133.041km/h (5)	16.665	6.369
			16.985 (5) 133.016km/h (5)	16.754 (2) 137.132km/h (1)		
			16.665 (3) 137.924km/h (1)			
41.	146 JELEN	I.kat.benzin do obsahu 2000 ccm BMW E34	17.433 (6) 136.165km/h (4)	17.415 (6) 131.536km/h (5)	16.684	6.388
			16.684 (4) 138.035km/h (3)	16.851 (4) 136.410km/h (4)		
			16.835 (5) 139.561km/h (4)			
42.	128 KUBAJZ	I.kat.benzin do obsahu 2000 ccm BMW E36	16.732 (4) 133.714km/h (5)		16.732	6.436
43.	96 PEDRO	I.kat.benzin do obsahu 2000 ccm Citroen Xsara	17.093 (5) 132.491km/h (6)	17.260 (5) 128.463km/h (6)	16.760	6.464
			17.057 (5) 130.850km/h (5)	17.055 (5) 129.321km/h (5)		
			16.760 (4) 134.610km/h (5)			
44.	138 GOLFI	I.kat.benzin obsahu 1400 ccm Honda Civic	16.796 (3) 130.012km/h (3)	16.865 (3) 130.672km/h (3)	16.796	6.500
			16.900 (2) 133.451km/h (2)	16.878 (2) 129.382km/h (3)		
			17.030 (2) 132.529km/h (1)			
45.	137 PUNKERKA	I.kat.benzin obsahu 1400 ccm Honda Civic	16.986 (4) 128.079km/h (4)	17.195 (4) 128.697km/h (4)	16.919	6.623
			17.007 (3) 128.053km/h (4)	16.919 (3) 131.139km/h (1)		
			17.171 (3) 124.733km/h (3)			
46.	118 PAWLUSHKA	I.kat.benzin do obsahu 2000 ccm Hyundai Coupe Igen.	17.697 (7) 123.699km/h (7)	16.922 (4) 133.522km/h (4)	16.922	6.626
			17.634 (6) 129.560km/h (6)	17.154 (6) 127.905km/h (6)		
			17.005 (6) 128.337km/h (6)			
47.	117 LAFY	I.kat.benzin obsahu 1400 ccm Honda Civic	17.415 (5) 127.703km/h (5)	17.295 (5) 124.037km/h (5)	17.008	6.712
			17.277 (4) 128.283km/h (3)	17.008 (4) 124.114km/h (4)		
			17.219 (4) 124.458km/h (4)			

Poř.	Stč	Jméno	Třída	stroj	Čas	Ztráta
			1. pokus		2. pokus	
			3. pokus		4. pokus	
			5. pokus		6. pokus	
48.	123	ROŠČÁK	I.kat.benzin do obsahu 3000 ccm	BMW 328i	17.199	6.903
			17.426 (6) 133.626km/h (4)		17.252 (6) 131.071km/h (6)	
			17.199 (6) 131.731km/h (6)		17.550 (4) 128.273km/h (3)	
			17.565 (4) 129.078km/h (4)			
49.	141	LEMBO	I.kat.benzin do obsahu 2500 ccm	BMW 525 E34	17.441	7.145
			17.441 (2) 131.167km/h (1)		17.511 (2) 128.968km/h (2)	
			17.514 (2) 126.842km/h (2)			
50.	158	JAROSLAV Jelínek	I.kat.benzin obsahu 1400 ccm	Mitsubishi Colt 1300	17.743	7.447
			17.780 (6) 116.211km/h (7)		17.800 (6) 112.529km/h (7)	
			17.849 (5) 121.736km/h (5)		17.972 (5) 118.218km/h (5)	
			17.743 (5) 119.969km/h (5)			
51.	161	BARG	I.kat.diesel do obsahu 2000 ccm	VW Pasat	18.577	8.281
			18.577 (7) 122.845km/h (7)		19.314 (7) 119.632km/h (7)	
			19.708 (7) 123.101km/h (6)			
52.	131	ANET	I.kat.benzin obsahu 1400 ccm	Seat	18.685	8.389
			19.398 (8) 116.243km/h (6)		19.228 (8) 115.081km/h (6)	
			18.685 (6) 120.987km/h (6)		19.002 (6) 116.462km/h (6)	
			19.373 (6) 114.625km/h (6)			
53.	140	TOČMYK	I.kat.benzin do obsahu 2000 ccm	Ford Mondeo Combi	19.003	8.707
			19.003 (8) 116.108km/h (8)		20.457 (7) 101.145km/h (7)	
			19.970 (7) 111.197km/h (7)		19.824 (7) 108.291km/h (7)	
54.	103	STEJSKAL Viktor	I.kat.benzin obsahu 1400 ccm	Peugeot 206	19.178	8.882
			19.221 (7) 109.628km/h (8)		19.179 (7) 111.059km/h (8)	
			19.178 (7) 109.070km/h (7)		19.720 (7) 107.922km/h (7)	
			19.730 (7) 106.639km/h (7)			
55.	157	WOWO	I.kat.benzin do obsahu 1600 ccm	Opel Astra	20.580	10.284
			21.238 (3) 101.803km/h (3)		20.580 (3) 102.838km/h (3)	
			20.603 (3) 102.679km/h (3)			

Přihlášeno 0
Startovalo 0
Klasifikováno 0

Kategorie II - speciální vozy

Poř.	Stč	Jméno	Třída	stroj	Čas	Ztráta
			1. pokus		2. pokus	
			3. pokus		4. pokus	
			5. pokus		6. pokus	
1.	106	MAŠÍ	II.kat.benzin do 2000 ccm	Audi S3	12.908	
			13.312 (1) 167.912km/h (1)		12.908 (1) 170.361km/h (1)	
			12.950 (1) 168.028km/h (1)		14.007 (1) 160.331km/h (1)	
			13.260 (1) 169.071km/h (1)			
2.	105	TOULA Jiří	II.kat.benzin nad 2000 ccm	Brouk	13.679	0.771
			14.381 (1) 165.805km/h (1)		14.265 (1) 165.219km/h (1)	
			13.915 (1) 167.798km/h (1)		13.853 (1) 159.671km/h (1)	
			13.679 (1) 170.128km/h (1)			
3.	134	BARTÁČEK Jan	II.kat.benzin nad 2000 ccm	Seat Ibiza	14.138	1.230
			14.781 (2) 159.994km/h (2)		14.487 (2) 160.039km/h (2)	
			14.138 (2) 166.354km/h (2)		15.360 (2) 157.273km/h (2)	
			14.209 (2) 166.595km/h (2)			
4.	116	FRIC Michal	II.kat.Diesel do 2000 ccm	WV Golf II	14.279	1.371
			15.277 (1) 113.453km/h (1)		14.279 (1) 154.086km/h (1)	
			15.006 (1) 151.252km/h (1)		14.702 (1) 147.379km/h (1)	
			14.563 (1) 153.532km/h (1)			
5.	145	LUDVIK CZ	I.kat.Veterán do r.v. 1974 včetně	Opel Kadet C GTE	16.281	3.373
			16.800 (1) 134.659km/h (1)		17.448 (1) 140.043km/h (1)	
			16.281 (1) 138.588km/h (1)		16.532 (1) 138.203km/h (1)	
			16.595 (1) 141.231km/h (1)			

Poř.	Stč	Jméno	Třída	stroj	Čas	Ztráta
			1. pokus 3. pokus 5. pokus		2. pokus 4. pokus 6. pokus	
6.	124	LONGER	II.kat.benzin do 2000 ccm 16.931(2) 126.736km/h (2) 17.167(2) 124.871km/h (3)	Škoda 130	16.931 17.279 (2) 123.334km/h (4)	4.023
7.	122	HEMZÁČEK David	II.kat.benzin do 2000 ccm 18.445(5) 117.308km/h (5) 17.210(3) 124.220km/h (4) 17.367(2) 121.861km/h (3)	Lotus 7	17.210 17.363 (3) 120.208km/h (5) 17.460 (2) 120.488km/h (4)	4.302
8.	142	DAVE	II.kat.benzin do 2000 ccm 17.868(4) 120.280km/h (3) 17.541(5) 123.180km/h (5) 17.665(4) 121.344km/h (4)	Renault 19	17.421 17.421 (4) 124.212km/h (2) 17.524 (3) 122.738km/h (2)	4.513
9.	114	SIRYO Taras	II.kat.benzin do 2000 ccm 17.842(3) 118.948km/h (4) 17.466(4) 125.303km/h (2) 17.582(3) 124.204km/h (2)	BMW 318i	17.466 17.655 (5) 124.187km/h (3) 17.717 (4) 121.252km/h (3)	4.558
10.	125	JARDA	I.kat.Veterán do r.v. 1974 včetně 24.214(2) 85.103km/h (2) 26.738(2) 83.127km/h (2)	Trabant 601 Combi	24.214 25.340 (2) 84.912km/h (2)	11.306

Přihlášeno 0

Startovalo 0

Klasifikováno 0

Kategorie TROFEJ

Poř.	Stč	Jméno	Třída	stroj	Čas	Ztráta
			1. pokus 3. pokus 5. pokus		2. pokus 4. pokus 6. pokus	
1.	159	BORY	MOTOCYKL do 1000 ccm 12.420(2) 191.810km/h (1) 11.167(2) 206.114km/h (2)	Yamaha RN16	11.126 11.126 (1) 213.919km/h (1)	
2.	46	MIREC	MOTOCYKL do 1000 ccm 11.244(1) 185.061km/h (2) 11.128(1) 208.104km/h (1) 11.405(1) 175.547km/h (1)	Honda CBR Fireblade	11.128 11.179 (2) 203.280km/h (2) 11.157 (1) 206.694km/h (1)	0.002
3.	153	ČERVENKA Petr	MOTOCYKL do 600 ccm 12.730(1) 162.153km/h (1) 12.635(1) 171.657km/h (1) 13.354(1) 158.898km/h (1)	Honda CBR 600F	12.612 12.612 (1) 167.593km/h (1) 13.922 (1) 153.772km/h (1)	1.486

Přihlášeno 0

Startovalo 0

Klasifikováno 0

Automobily bez rozdílu

Poř.	Stč	Jméno	Třída		stroj	Čas		Ztráta
			1. pokus	3. pokus		2. pokus	4. pokus	
1.	10	TOM	I.kat.benzin nad obsah 4000 ccm		Nissan GTR	10.296		
			10.296 (1)	227.660km/h (1)	11.478 (3)	209.961km/h (1)		
			11.575 (2)	212.499km/h (1)				
2.	163	TOMÁŠ	I.kat.benzin nad obsah 4000 ccm		Nissan GT-R	11.180		0.884
			11.238 (2)	203.599km/h (2)	11.180 (1)	202.198km/h (2)		
3.	148	PEPA	I.kat.benzin nad obsah 4000 ccm		Porsche Carrera 911	11.236		0.940
			12.062 (3)	192.895km/h (3)	11.454 (2)	194.963km/h (3)		
			11.329 (1)	195.357km/h (2)	11.236 (1)	195.434km/h (1)		
4.	106	MAŠÍ	II.kat.benzin do 2000 ccm		Audi S3	12.908		2.612
			13.312 (1)	167.912km/h (1)	12.908 (1)	170.361km/h (1)		
			12.950 (1)	168.028km/h (1)	14.007 (1)	160.331km/h (1)		
			13.260 (1)	169.071km/h (1)				
5.	151	KREPSÍK	I.kat.diesel do obsahu 3000 ccm		BMW 435 XD	13.072		2.776
			13.129 (1)	168.279km/h (2)	13.450 (1)	165.175km/h (2)		
			13.264 (1)	164.673km/h (4)	13.072 (1)	164.869km/h (4)		
6.	126	LÁDÍK	I.kat.benzin nad obsah 4000 ccm		BMW 335i	13.150		2.854
			13.339 (4)	172.380km/h (4)	13.280 (4)	176.533km/h (4)		
			13.218 (3)	172.269km/h (4)	13.287 (2)	171.575km/h (3)		
			13.150 (1)	172.854km/h (1)				
7.	49	TOM Chipforum	I.kat.diesel do obsahu 2000 ccm		Seat Leon 4	13.211		2.915
			13.603 (1)	156.550km/h (3)	13.283 (1)	165.881km/h (1)		
			17.747 (6)	102.375km/h (7)	13.211 (1)	166.116km/h (2)		
8.	143	BOČEK	I.kat.benzin nad obsah 4000 ccm		EEP SRT8	13.329		3.033
			13.882 (6)	156.133km/h (6)	13.470 (5)	160.956km/h (6)		
			13.390 (4)	161.283km/h (5)	13.329 (3)	165.488km/h (4)		
			13.412 (2)	165.169km/h (2)				
9.	77	INDI TDI Garage	I.kat.diesel do obsahu 3000 ccm		Audi A40 30TDi	13.359		3.063
			13.662 (2)	160.612km/h (3)	13.516 (2)	166.570km/h (1)		
			13.492 (4)	165.073km/h (3)	13.359 (2)	166.919km/h (2)		
10.	155	DANDY	I.kat.diesel do obsahu 3000 ccm		Audi A5	13.482		3.186
			13.855 (3)	158.668km/h (4)	13.579 (3)	164.840km/h (3)		
			13.482 (2)	165.787km/h (2)	13.487 (3)	165.425km/h (3)		
11.	48	PETR Chipforum	I.kat.diesel do obsahu 2000 ccm		Škoda Octavia	13.484		3.188
			18.007 (6)	151.120km/h (4)	13.627 (2)	165.219km/h (2)		
			13.484 (1)	165.833km/h (2)	13.683 (3)	158.031km/h (4)		
	139	MARTIN Zima	I.kat.diesel do obsahu 3000 ccm		BMW 335D	13.484		3.188
			13.912 (4)	168.533km/h (1)	14.023 (5)	162.903km/h (4)		
			13.484 (3)	169.010km/h (1)	13.623 (4)	168.255km/h (1)		
13.	147	MAŠEK Jiří	I.kat.benzin nad obsah 4000 ccm		Lexus ISF	13.492		3.196
			13.656 (5)	171.080km/h (5)	13.496 (6)	172.997km/h (5)		
			13.533 (5)	172.467km/h (3)	13.492 (4)	173.740km/h (2)		
14.	127	DKOUBIC	I.kat.benzin do obsahu 4000 ccm		BMW 340i	13.511		3.215
			13.774 (1)	169.314km/h (1)	13.803 (1)	174.916km/h (1)		
			14.083 (2)	168.356km/h (1)	13.511 (1)	176.248km/h (1)		
			13.713 (1)	176.941km/h (1)				
15.	38	HORÁK Jan	I.kat.benzin do obsahu 3000 ccm		Opel Kadet 2.0	13.613		3.317
			13.749 (1)	168.624km/h (1)	13.909 (1)	168.539km/h (1)		
			13.613 (1)	173.803km/h (1)				

Poř.	Stč	Jméno	Třída	stroj	Čas	Ztráta
			1. pokus		2. pokus	
			3. pokus		4. pokus	
			5. pokus		6. pokus	
16.	119	TDI Drápek	I.kat.diesel do obsahu 2000 ccm	VW Golf	13.629	3.333
			13.745 (2) 158.246km/h (2)	13.859 (3) 162.809km/h (4)		
			13.789 (2) 158.807km/h (3)	13.629 (2) 159.551km/h (3)		
			13.708 (1) 158.557km/h (2)			
17.	105	TOULA Jiří	II.kat.benzin nad 2000 ccm	Brouk	13.679	3.383
			14.381 (1) 165.805km/h (1)	14.265 (1) 165.219km/h (1)		
			13.915 (1) 167.798km/h (1)	13.853 (1) 159.671km/h (1)		
			13.679 (1) 170.128km/h (1)			
18.	149	LUKÁŠ Kmoníček	I.kat.diesel do obsahu 3000 ccm	BMW 535 XD	13.817	3.521
			13.932 (5) 156.869km/h (5)	13.989 (4) 158.052km/h (5)		
			13.881 (5) 158.613km/h (5)	13.882 (5) 154.529km/h (6)		
			13.817 (1) 158.637km/h (1)			
19.	45	ŠVARC Jakub	I.kat.benzin do obsahu 4000 ccm	Nissan 370Z	13.901	3.605
			14.009 (2) 161.576km/h (2)	14.140 (2) 160.293km/h (2)		
			13.901 (1) 158.789km/h (2)	14.975 (2) 154.296km/h (2)		
			13.951 (2) 164.933km/h (2)			
20.	134	BARTÁČEK Jan	II.kat.benzin nad 2000 ccm	Seat Ibiza	14.138	3.842
			14.781 (2) 159.994km/h (2)	14.487 (2) 160.039km/h (2)		
			14.138 (2) 166.354km/h (2)	15.360 (2) 157.273km/h (2)		
			14.209 (2) 166.595km/h (2)			
21.	73	PRCEK	I.kat.benzin do obsahu 3000 ccm	BMW M3	14.171	3.875
			14.712 (2) 162.288km/h (2)	14.171 (2) 164.644km/h (2)		
			14.297 (2) 159.719km/h (2)			
22.	132	STRAČENKA	I.kat.benzin do obsahu 3500 ccm	Subaru Impreza WRX	14.201	3.905
			15.421 (1) 144.497km/h (2)	14.469 (1) 152.099km/h (2)		
			15.130 (2) 151.653km/h (2)	14.201 (1) 147.755km/h (2)		
			14.379 (1) 148.262km/h (2)			
23.	8	PARY	I.kat.benzin do obsahu 2000 ccm	Nissan Sunny	14.239	3.943
			14.534 (1) 152.976km/h (1)	14.305 (1) 154.514km/h (1)		
			14.239 (1) 154.698km/h (1)	14.451 (1) 158.173km/h (1)		
			14.519 (1) 152.542km/h (1)			
24.	156	FILIP	I.kat.diesel do obsahu 3000 ccm	BMW 330	14.266	3.970
			17.011 (9) 155.289km/h (6)	14.368 (6) 157.718km/h (6)		
			14.438 (6) 158.593km/h (6)	14.495 (6) 156.936km/h (5)		
			14.266 (2) 149.563km/h (4)			
25.	116	FRIC Michal	II.kat.Diesel do 2000 ccm	WV Golf II	14.279	3.983
			15.277 (1) 113.453km/h (1)	14.279 (1) 154.086km/h (1)		
			15.006 (1) 151.252km/h (1)	14.702 (1) 147.379km/h (1)		
			14.563 (1) 153.532km/h (1)			
26.	102	COOKY	I.kat.diesel do obsahu 3000 ccm	BMW	14.323	4.027
			14.326 (6) 151.733km/h (7)	14.410 (7) 151.721km/h (7)		
			14.814 (7) 149.160km/h (7)	14.516 (7) 151.515km/h (7)		
			14.323 (3) 152.089km/h (2)			
27.	160	CIPERY	I.kat.benzin do obsahu 3500 ccm	BMW M3	14.572	4.276
			15.553 (2) 161.030km/h (1)	14.988 (2) 154.760km/h (1)		
			14.820 (1) 163.997km/h (1)	14.572 (2) 157.676km/h (1)		
			14.905 (2) 155.043km/h (1)			
28.	70	ŠEDIVÝ Petr	I.kat.diesel do obsahu 2500 ccm	Alfa Romeo 156	14.642	4.346
			14.945 (1) 165.475km/h (1)	14.642 (1) 167.506km/h (1)		
			16.012 (1) 113.207km/h (1)	14.925 (1) 164.505km/h (1)		
29.	39	MATOUŠ Jindřich	I.kat.benzin do obsahu 2000 ccm	Opel Kadet	14.658	4.362
			14.911 (2) 151.182km/h (2)	15.112 (2) 147.138km/h (2)		
			14.658 (2) 152.031km/h (2)	14.703 (2) 147.144km/h (2)		
			14.835 (2) 150.382km/h (2)			
30.	120	INDUSTRY CZ	I.kat.diesel do obsahu 2000 ccm	VW Polo	14.920	4.624
			17.118 (5) 160.924km/h (1)	14.920 (4) 163.908km/h (3)		
			15.454 (4) 166.857km/h (1)	15.929 (4) 167.933km/h (1)		
			15.061 (2) 165.029km/h (1)			
31.	144	JANÁČEK Petr	I.kat.diesel do obsahu 3000 ccm	BMW X6	15.088	4.792
			15.336 (7) 146.281km/h (8)	15.088 (8) 147.465km/h (8)		
			15.302 (8) 146.922km/h (8)	15.246 (8) 146.241km/h (8)		
			15.149 (4) 151.054km/h (3)			

Poř.	Stč	Jméno	Třída	stroj	Čas	Ztráta
			1. pokus		2. pokus	
			3. pokus		4. pokus	
			5. pokus		6. pokus	
32.	44	DRESLER Tomáš	I.kat.benzin obsahu 1400 ccm	Škoda Favorit	15.234	4.938
			15.306(1) 141.312km/h (1)		15.234 (1) 145.042km/h (1)	
33.	154	KOPRIVA Patrik	I.kat.diesel do obsahu 2000 ccm	Seat Ibiza	15.270	4.974
			16.008(3) 147.194km/h (5)		16.483 (6) 144.709km/h (5)	
			15.270(3) 149.705km/h (4)			
34.	115	PETKA	I.kat.benzin do obsahu 1600 ccm	Honda CRX	15.633	5.337
			15.725(1) 145.982km/h (1)		15.839 (1) 147.768km/h (1)	
			15.879(1) 146.227km/h (1)		15.958 (1) 144.642km/h (1)	
			15.633(1) 146.313km/h (1)			
35.	11	POVÝŠIL Lukáš	I.kat.benzin obsahu 1400 ccm	Citroen Saxo	15.726	5.430
			16.304(2) 130.716km/h (2)		15.900 (2) 132.432km/h (2)	
			15.726(1) 133.913km/h (1)		15.987 (1) 130.857km/h (2)	
			15.828(1) 129.911km/h (2)			
	133	BŮŽEK Vlastimil	I.kat.benzin do obsahu 2000 ccm	Opel Vectra	15.726	5.430
			16.150(3) 138.191km/h (3)		16.092 (3) 145.246km/h (3)	
			16.181(3) 137.325km/h (4)		15.726 (3) 145.051km/h (3)	
			16.346(3) 143.299km/h (3)			
37.	107	KRISTYE	I.kat.diesel do obsahu 2000 ccm	BMW	15.941	5.645
			16.255(4) 138.121km/h (6)		16.215 (5) 138.883km/h (6)	
			16.124(5) 139.785km/h (5)		15.957 (5) 139.421km/h (5)	
			15.941(3) 140.281km/h (3)			
38.	162	FILIP Šefl	I.kat.benzin do obsahu 3000 ccm	Citroen DS 3	16.177	5.881
			16.473(3) 135.273km/h (3)		16.370 (3) 133.851km/h (4)	
			16.177(3) 139.926km/h (3)		16.313 (1) 134.179km/h (2)	
			16.261(1) 134.515km/h (2)			
39.	136	TOPOR David	I.kat.benzin do obsahu 1600 ccm	Peugeot 106 Rallye	16.230	5.934
			16.445(2) 137.259km/h (2)		16.385 (2) 134.287km/h (2)	
			16.230(2) 134.673km/h (2)		19.578 (2) 112.460km/h (2)	
			16.539(2) 137.063km/h (2)			
40.	121	P.G.	I.kat.diesel do obsahu 3000 ccm	BMW 530D	16.261	5.965
			16.688(8) 128.053km/h (9)		18.685 (9) 118.635km/h (9)	
			17.793(9) 127.554km/h (9)		16.365 (9) 131.073km/h (9)	
			16.261(5) 131.436km/h (5)			
41.	145	LUDVIK CZ	I.kat.Veterán do r.v. 1974 včetně	Opel Kadet C GTE	16.281	5.985
			16.800(1) 134.659km/h (1)		17.448 (1) 140.043km/h (1)	
			16.281(1) 138.588km/h (1)		16.532 (1) 138.203km/h (1)	
			16.595(1) 141.231km/h (1)			
42.	135	PROCHÁZKOVÁ Marcel	I.kat.benzin do obsahu 3000 ccm	Opel Monza	16.299	6.003
			17.225(5) 131.990km/h (6)		16.661 (4) 136.172km/h (3)	
			16.543(4) 135.358km/h (4)		17.287 (3) 126.983km/h (4)	
			16.299(2) 133.560km/h (3)			
43.	129	ZIMA Martin	I.kat.benzin do obsahu 3500 ccm	Renault Magene Cabri	16.318	6.022
			16.572(3) 137.098km/h (3)		16.344 (3) 138.230km/h (3)	
			16.568(3) 137.612km/h (3)		16.333 (3) 139.938km/h (3)	
			16.318(3) 140.598km/h (3)			
44.	130	WISKY	I.kat.benzin do obsahu 2500 ccm	BMW 320i	16.445	6.149
			16.721(1) 128.418km/h (2)		17.107 (1) 134.976km/h (1)	
			17.222(1) 133.067km/h (1)		16.493 (1) 131.637km/h (1)	
			16.445(1) 131.063km/h (1)			
45.	152	FERRY	I.kat.benzin do obsahu 3000 ccm	VW Passat	16.665	6.369
			17.048(4) 132.270km/h (5)		16.907 (5) 133.041km/h (5)	
			16.985(5) 133.016km/h (5)		16.754 (2) 137.132km/h (1)	
			16.665(3) 137.924km/h (1)			
46.	146	JELEN	I.kat.benzin do obsahu 2000 ccm	BMW E34	16.684	6.388
			17.433(6) 136.165km/h (4)		17.415 (6) 131.536km/h (5)	
			16.684(4) 138.035km/h (3)		16.851 (4) 138.410km/h (4)	
			16.835(5) 139.561km/h (4)			
47.	128	KUBAJZ	I.kat.benzin do obsahu 2000 ccm	BMW E36	16.732	6.436
			16.732(4) 133.714km/h (5)			

Poř.	Stč	Jméno	Třída	stroj	Čas	Ztráta
			1. pokus		2. pokus	
			3. pokus		4. pokus	
			5. pokus		6. pokus	
48.	96	PEDRO	I.kat.benzin do obsahu 2000 ccm	Citreon Xsara	16.760	6.464
			17.093 (5) 132.491km/h (6)	17.260 (5) 128.463km/h (6)		
			17.057 (5) 130.850km/h (5)	17.055 (5) 129.321km/h (5)		
			16.760 (4) 134.610km/h (5)			
49.	138	GOLFI	I.kat.benzin obsahu 1400 ccm	Honda Civic	16.796	6.500
			16.796 (3) 130.012km/h (3)	16.865 (3) 130.672km/h (3)		
			16.900 (2) 133.451km/h (2)	16.878 (2) 129.382km/h (3)		
			17.030 (2) 132.529km/h (1)			
50.	137	PUNKERKA	I.kat.benzin obsahu 1400 ccm	Honda Civic	16.919	6.623
			16.986 (4) 128.079km/h (4)	17.195 (4) 128.697km/h (4)		
			17.007 (3) 128.053km/h (4)	16.919 (3) 131.139km/h (1)		
			17.171 (3) 124.733km/h (3)			
51.	118	PAWLUSHKA	I.kat.benzin do obsahu 2000 ccm	Hyundai Coupe Igen.	16.922	6.626
			17.697 (7) 123.699km/h (7)	16.922 (4) 133.522km/h (4)		
			17.634 (6) 129.560km/h (6)	17.154 (6) 127.905km/h (6)		
			17.005 (6) 128.337km/h (6)			
52.	124	LONGER	II.kat.benzin do 2000 ccm	Škoda 130	16.931	6.635
			16.931 (2) 126.736km/h (2)	17.279 (2) 123.334km/h (4)		
			17.167 (2) 124.871km/h (3)			
53.	117	LAFY	I.kat.benzin obsahu 1400 ccm	Honda Civic	17.008	6.712
			17.415 (5) 127.703km/h (5)	17.295 (5) 124.037km/h (5)		
			17.277 (4) 128.283km/h (3)	17.008 (4) 124.114km/h (4)		
			17.219 (4) 124.458km/h (4)			
54.	123	ROŠŤÁK	I.kat.benzin do obsahu 3000 ccm	BMW 328i	17.199	6.903
			17.426 (6) 133.626km/h (4)	17.252 (6) 131.071km/h (6)		
			17.199 (6) 131.731km/h (6)	17.550 (4) 128.273km/h (3)		
			17.565 (4) 129.078km/h (4)			
55.	122	HEMZÁČEK David	II.kat.benzin do 2000 ccm	Lotus 7	17.210	6.914
			18.445 (5) 117.308km/h (5)	17.363 (3) 120.208km/h (5)		
			17.210 (3) 124.220km/h (4)	17.460 (2) 120.488km/h (4)		
			17.367 (2) 121.861km/h (3)			
56.	142	DAVE	II.kat.benzin do 2000 ccm	Renault 19	17.421	7.125
			17.868 (4) 120.280km/h (3)	17.421 (4) 124.212km/h (2)		
			17.541 (5) 123.180km/h (5)	17.524 (3) 122.738km/h (2)		
			17.665 (4) 121.344km/h (4)			
57.	141	LEMBO	I.kat.benzin do obsahu 2500 ccm	BMW 525 E34	17.441	7.145
			17.441 (2) 131.167km/h (1)	17.511 (2) 128.968km/h (2)		
			17.514 (2) 126.842km/h (2)			
58.	114	SIRYO Taras	II.kat.benzin do 2000 ccm	BMW 318i	17.466	7.170
			17.842 (3) 118.948km/h (4)	17.655 (5) 124.187km/h (3)		
			17.466 (4) 125.303km/h (2)	17.717 (4) 121.252km/h (3)		
			17.582 (3) 124.204km/h (2)			
59.	158	JAROSLAV Jelínek	I.kat.benzin obsahu 1400 ccm	Mitsubishi Colt 1300	17.743	7.447
			17.780 (6) 116.211km/h (7)	17.800 (6) 112.529km/h (7)		
			17.849 (5) 121.736km/h (5)	17.972 (5) 118.218km/h (5)		
			17.743 (5) 119.969km/h (5)			
60.	161	BARG	I.kat.diesel do obsahu 2000 ccm	VW Pasat	18.577	8.281
			18.577 (7) 122.845km/h (7)	19.314 (7) 119.632km/h (7)		
			19.708 (7) 123.101km/h (6)			
61.	131	ANET	I.kat.benzin obsahu 1400 ccm	Seat	18.685	8.389
			19.398 (8) 118.243km/h (6)	19.228 (8) 115.081km/h (6)		
			18.685 (6) 120.987km/h (6)	19.002 (6) 116.462km/h (6)		
			19.373 (6) 114.625km/h (6)			
62.	140	TOCMYK	I.kat.benzin do obsahu 2000 ccm	Ford Mondeo Combi	19.003	8.707
			19.003 (8) 116.108km/h (8)	20.457 (7) 101.145km/h (7)		
			19.970 (7) 111.197km/h (7)	19.824 (7) 108.291km/h (7)		
63.	103	STEJSKAL Viktor	I.kat.benzin obsahu 1400 ccm	Peugeot 206	19.178	8.882
			19.221 (7) 109.628km/h (8)	19.179 (7) 111.059km/h (8)		
			19.178 (7) 109.070km/h (7)	19.720 (7) 107.922km/h (7)		
			19.730 (7) 106.639km/h (7)			

Poř.	Stč	Jméno	Třída	stroj	Čas	Ztráta
			1. pokus		2. pokus	
			3. pokus		4. pokus	
			5. pokus		6. pokus	
64.	157	WOWO	I.kat.benzin do obsahu 1600 ccm	Opel Astra	20.580	10.284
			21.238 (3)	101.803km/h (3)	20.580 (3)	102.838km/h (3)
			20.603 (3)	102.679km/h (3)		

65.	125	JARDA	I.kat.Veterán do r.v. 1974 včetně	Trabant 601 Combi	24.214	13.918
			24.214 (2)	85.103km/h (2)	25.340 (2)	84.912km/h (2)
			26.738 (2)	83.127km/h (2)		

Přihlášeno 0

Startovalo 0

Klasifikováno 0

Libor Houšť

ředitel závodu