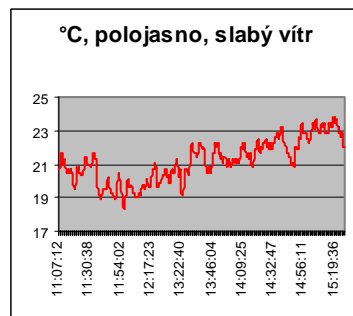


# VLNOBITÍ 2009

23.května 2009

Hlučín



## V ý s l e d k o v á l i s t i n a SPRINT

### Do obsahu 1400

| por | stč | jméno      | čas 1.pokusu | obsah km/h | značka vozu       | čas 2.pokusu | čas km/h   | odstup |
|-----|-----|------------|--------------|------------|-------------------|--------------|------------|--------|
| 1.  | 49  | KOLAČANSKÝ | 15.505 ( 1)  | 126.8 ( 3) | Škoda 110 RMP     | 15.304 ( 1)  | 126.9 ( 2) | 0,000  |
| 2.  | 27  | REMIÁŠ     | 15.877 ( 2)  | 127.8 ( 1) | Suzuki Swift      | 15.588 ( 2)  | 130.5 ( 1) | 0.284  |
| 3.  | 19  | CIESLAR    | 16.212 ( 4)  | 127.2 ( 2) | Ford Fiesta       | 15.880 ( 3)  | 122.8 ( 3) | 0.576  |
| 4.  | 47  | FARNIK     | 16.113 ( 3)  | 119.5 ( 4) | Škoda 100         | 16.069 ( 4)  | 120.0 ( 4) | 0.765  |
| 5.  | 48  | KRÚPA      | 17.370 ( 5)  | 0.0 ( 0)   | Opel togra        | 0,000 ( 0)   | 0.0 ( 0)   | 2.066  |
| 6.  | 4   | SOBOL      | 17.583 ( 6)  | 112.1 ( 5) | Škoda             | 17.881 ( 6)  | 112.9 ( 5) | 2.279  |
| 7.  | 34  | ŠUSTEK     | 17.635 ( 7)  | 108.7 ( 6) | Škoda Favorit 135 | 0,000 ( 0)   | 0.0 ( 0)   | 2.331  |
| 8.  | 50  | NEVROBIK   | 17.787 ( 8)  | 106.9 ( 7) | Škoda 120         | 17.851 ( 5)  | 107.2 ( 6) | 2.483  |
| 9.  | 5   | PAULOVÍČ   | 18.587 ( 9)  | 101.5 ( 9) | Škoda Felicia     | 0,000 ( 0)   | 0.0 ( 0)   | 3.283  |
| 10. | 17  | STROUHAL   | 18.666 (10)  | 102.1 ( 8) | Trabant           | 0,000 ( 0)   | 0.0 ( 0)   | 3.362  |

Přihlášeno: 10 Startovalo: 10 Odstoupilo: 0 Diskvalifik.: 0 Dokončilo: 10

### Do obsahu 1600

| por | stč | jméno     | čas 1.pokusu | obsah km/h | značka vozu      | čas 2.pokusu | čas km/h   | odstup |
|-----|-----|-----------|--------------|------------|------------------|--------------|------------|--------|
| 1.  | 25  | ROLNÝ     | 14.361 ( 1)  | 146.3 ( 1) | Honda civic cupe | 0,000 ( 0)   | 0.0 ( 0)   | 0,000  |
| 2.  | 15  | KNEBEL    | 14.692 ( 2)  | 138.6 ( 4) | Peugeot 106      | 0,000 ( 0)   | 0.0 ( 0)   | 0.331  |
| 3.  | 26  | HILA      | 14.775 ( 3)  | 139.0 ( 2) | Honda            | 0,000 ( 0)   | 0.0 ( 0)   | 0.414  |
| 4.  | 41  | GREGORIČA | 15.352 ( 5)  | 133.9 ( 6) | Citroen saxo     | 14.854 ( 1)  | 136.6 ( 1) | 0.493  |
| 5.  | 44  | MIKULA    | 14.855 ( 4)  | 139.0 ( 3) | Honda CRX        | 0,000 ( 0)   | 0.0 ( 0)   | 0.494  |
| 6.  | 2   | TOKARČÍK  | 15.451 ( 6)  | 126.4 ( 8) | Honda civic      | 15.390 ( 2)  | 126.4 ( 2) | 1.029  |
| 7.  | 12  | CHŘÍBEK   | 15.592 ( 7)  | 134.0 ( 5) | Mini cuper       | 0,000 ( 0)   | 0.0 ( 0)   | 1.231  |
| 8.  | 42  | LUBOJÁCKÝ | 16.056 ( 8)  | 130.9 ( 7) | Citroen saxo     | 16.459 ( 3)  | 126.3 ( 3) | 1.695  |
| 9.  | 3   | BLAŽEK    | 16.218 ( 9)  | 126.3 ( 9) | Honda civic      | 0,000 ( 0)   | 0.0 ( 0)   | 1.857  |
| 10. | 13  | FILIP     | 17.704 (10)  | 115.1 (10) | Hyundai coupe    | 0,000 ( 0)   | 0.0 ( 0)   | 3.343  |

|     |                |             |                              |
|-----|----------------|-------------|------------------------------|
| 11. | 32 GALGAŇÁKOVÁ | VW Golf 111 | 18.778                       |
|     | 18.926 (11)    | 101.5 (11)  | 18.778 ( 4) 106.4 ( 4) 4.417 |

Přihlášeno: 11 Startovalo: 11 Odstoupilo: 0 Diskvalifik.: 0 Dokončilo: 11

#### Do obsahu 2000

| por | stč | jméno    | čas 1.pokusu | obsah km/h | značka vozu     | čas 2.pokusu | čas km/h   | odstup |
|-----|-----|----------|--------------|------------|-----------------|--------------|------------|--------|
| 1.  | 1   | POTAKH   | 13.652 ( 1)  | 150.1 ( 1) | Honda Integra   | 13.679 ( 1)  | 152.0 ( 1) | 0,000  |
| 2.  | 28  | NOWAK    | 13.830 ( 2)  | 144.0 ( 2) | VW Golf I       | 0,000 ( 0)   | 0.0 ( 0)   | 0.178  |
| 3.  | 18  | KOSAR    | 14.237 ( 3)  | 141.1 ( 3) | Oprl Kadett BSI | 14.214 ( 2)  | 142.2 ( 2) | 0.562  |
| 4.  | 36  | JANÁK    | 14.524 ( 4)  | 136.5 ( 4) | Opel calibra    | 14.507 ( 3)  | 136.8 ( 3) | 0.855  |
| 5.  | 39  | BOCEK    | 14.917 ( 6)  | 133.0 ( 6) | Golf I          | 14.721 ( 4)  | 133.5 ( 4) | 1.069  |
| 6.  | 43  | DUDÁŠ    | 14.848 ( 5)  | 135.4 ( 5) | Opel calibra    | 0,000 ( 0)   | 0.0 ( 0)   | 1.196  |
| 7.  | 37  | SZYMONEK | 15.466 ( 7)  | 129.2 ( 8) | VW Golf         | 15.366 ( 5)  | 130.1 ( 5) | 1.714  |
| 8.  | 6   | KAČÍREK  | 15.527 ( 8)  | 128.6 ( 9) | VW Golf         | 0,000 ( 0)   | 0.0 ( 0)   | 1.875  |
| 9.  | 7   | SEBERA   | 15.778 ( 9)  | 129.3 ( 7) | Ford puma       | 0,000 ( 0)   | 0.0 ( 0)   | 2.126  |
| 10. | 24  | SVOBODA  | 16.424 (10)  | 0.0 ( 0)   | Audi TT         | 0,000 ( 0)   | 0.0 ( 0)   | 2.772  |
| 11. | 38  | KUBÍK    | 16.777 (11)  | 121.8 (10) | Opel calibra    | 0,000 ( 0)   | 0.0 ( 0)   | 3.125  |
| 12. | 31  | MACHÁČ   | 17.913 (12)  | 111.3 (11) | Škoda Fabia     | 17.615 ( 6)  | 114.5 ( 6) | 3.963  |

Přihlášeno: 12 Startovalo: 12 Odstoupilo: 0 Diskvalifik.: 0 Dokončilo: 12

#### Do obsahu 2500

| por | stč | jméno   | čas 1.pokusu | obsah km/h | značka vozu | čas 2.pokusu | čas km/h   | odstup |
|-----|-----|---------|--------------|------------|-------------|--------------|------------|--------|
| 1.  | 9   | ŠIMELA  | 13.822 ( 1)  | 149.5 ( 1) | Fiat punto  | 0,000 ( 0)   | 0.0 ( 0)   | 0,000  |
| 2.  | 35  | SCHMEJA | 14.964 ( 2)  | 144.1 ( 2) | Alfa romeo  | 14.964 ( 1)  | 136.2 ( 1) | 1.142  |
| 3.  | 40  | KNĚZEK  | 15.171 ( 3)  | 133.7 ( 3) | BMW 325     | 15.369 ( 2)  | 132.7 ( 2) | 1.349  |
| 4.  | 8   | GUBANEC | 16.377 ( 4)  | 0.0 ( 0)   | Fiat punto  | 15.953 ( 3)  | 0.0 ( 0)   | 2.131  |

Přihlášeno: 4 Startovalo: 4 Odstoupilo: 0 Diskvalifik.: 0 Dokončilo: 4

#### Do obsahu 3000

| por | stč | jméno       | čas 1.pokusu | obsah km/h | značka vozu       | čas 2.pokusu | čas km/h   | odstup |
|-----|-----|-------------|--------------|------------|-------------------|--------------|------------|--------|
| 1.  | 30  | FÖLDI       | 13.277 ( 1)  | 145.4 ( 1) | VW Golf 11 16V    | 0,000 ( 0)   | 0.0 ( 0)   | 0,000  |
| 2.  | 22  | STEINBERGER | 15.615 ( 2)  | 129.4 ( 3) | VW Golf VRG       | 15.283 ( 1)  | 131.4 ( 1) | 2.006  |
| 3.  | 54  | LIPINA      | 15.723 ( 3)  | 132.1 ( 2) | Peugeot coupé 406 | 0,000 ( 0)   | 0.0 ( 0)   | 2.446  |

Přihlášeno: 3 Startovalo: 3 Odstoupilo: 0 Diskvalifik.: 0 Dokončilo: 3

**Do obsahu 3500**

| por | stč | jméno             | čas 1.pokusu | obsah km/h | značka vozu              | čas 2.pokusu | čas km/h   | odstup |
|-----|-----|-------------------|--------------|------------|--------------------------|--------------|------------|--------|
| 1.  | 51  | <b>RAČEK</b>      | 14.132 ( 3)  | 144.6 ( 4) | <b>Subaru Impreza Gt</b> | 13.429 ( 1)  | 13.4 ( 3)  | 0,000  |
| 2.  | 29  | <b>NOWAK</b>      | 14.129 ( 2)  | 148.5 ( 2) | <b>Fiat coupe</b>        | 13.799 ( 2)  | 149.7 ( 1) | 0.370  |
| 3.  | 20  | <b>BRZOBOHATÝ</b> | 13.931 ( 1)  | 149.5 ( 1) | <b>VW Golf GTI</b>       | 0,000 ( 0)   | 0.0 ( 0)   | 0.502  |
| 4.  | 23  | <b>BILÍK</b>      | 14.324 ( 4)  | 145.7 ( 3) | <b>Nissan 350 Z</b>      | 14.707 ( 3)  | 143.5 ( 2) | 0.895  |

Přihlášeno: 4 Startovalo: 4 Odstoupilo: 0 Diskvalifik.: 0 Dokončilo: 4

**Do obsahu 4000**

| por | stč | jméno         | čas 1.pokusu | obsah km/h | značka vozu           | čas 2.pokusu | čas km/h   | odstup |
|-----|-----|---------------|--------------|------------|-----------------------|--------------|------------|--------|
| 1.  | 46  | <b>SZLAUR</b> | 12.816 ( 1)  | 158.0 ( 1) | <b>Opel speedster</b> | 12.944 ( 1)  | 159.2 ( 1) | 0,000  |

Přihlášeno: 1 Startovalo: 1 Odstoupilo: 0 Diskvalifik.: 0 Dokončilo: 1

**Nad obsah 4000**

| por | stč | jméno           | čas 1.pokusu | obsah km/h | značka vozu               | čas 2.pokusu | čas km/h   | odstup |
|-----|-----|-----------------|--------------|------------|---------------------------|--------------|------------|--------|
| 1.  | 21  | <b>ZITEC</b>    | 13.534 ( 1)  | 160.3 ( 1) | <b>Ford Mustang SC281</b> | 13.273 ( 1)  | 162.9 ( 1) | 0,000  |
| 2.  | 52  | <b>DEMBA</b>    | 14.880 ( 2)  | 138.2 ( 2) | <b>Mercedes CLS</b>       | 0,000 ( 0)   | 0.0 ( 0)   | 1.607  |
| 3.  | 53  | <b>BUML</b>     | 15.494 ( 3)  | 129.0 ( 3) | <b>Dodge</b>              | 0,000 ( 0)   | 0.0 ( 0)   | 2.221  |
| 4.  | 14  | <b>SEZEMSKÝ</b> | 17.674 ( 4)  | 115.7 ( 4) | <b>Dodge dakota</b>       | 15.842 ( 2)  | 128.3 ( 2) | 2.569  |

Přihlášeno: 4 Startovalo: 4 Odstoupilo: 0 Diskvalifik.: 0 Dokončilo: 4

**DIESEL do obsahu 2000**

| por | stč | jméno                  | čas 1.pokusu | obsah km/h | značka vozu         | čas 2.pokusu | čas km/h   | odstup |
|-----|-----|------------------------|--------------|------------|---------------------|--------------|------------|--------|
| 1.  | 45  | <b>TDI Power</b>       | 13.262 ( 1)  | 0.0 ( 0)   | <b>VW Golf</b>      | 0,000 ( 0)   | 0.0 ( 0)   | 0,000  |
| 2.  | 10  | <b>TDIGARAGE Marek</b> | 14.815 ( 2)  | 0.0 ( 0)   | <b>Audi cab TDI</b> | 0,000 ( 0)   | 0.0 ( 0)   | 1.553  |
| 3.  | 11  | <b>ZAVODNÝ</b>         | 15.732 ( 3)  | 131.5 ( 1) | <b>Škoda Fabia</b>  | 16.142 ( 1)  | 132.3 ( 1) | 2.470  |
| 4.  | 16  | <b>PIKASO</b>          | 16.233 ( 4)  | 0.0 ( 0)   | <b>WV Vento</b>     | 0,000 ( 0)   | 0.0 ( 0)   | 2.971  |

Přihlášeno: 4 Startovalo: 4 Odstoupilo: 0 Diskvalifik.: 0 Dokončilo: 4

# V ý s l e d k o v á      l i s t i n a      b e z   r o z d í l u   o b s a h u   a   p a l i v a

| por | stč | jméno           | čas 1.pokusu | obsah km/h | značka vozu        | čas 2.pokusu | čas km/h   | odstup |
|-----|-----|-----------------|--------------|------------|--------------------|--------------|------------|--------|
| 1.  | 46  | SZLAUR          | 12.816 ( 1)  | 158.0 ( 2) | Opel speedster     | 12.944 ( 1)  | 159.2 ( 2) | 0,000  |
| 2.  | 45  | TDI Power       | 13.262 ( 2)  | 0.0 ( 0)   | VW Golf            | 0,000 ( 0)   | 0.0 ( 0)   | 0.446  |
| 3.  | 21  | ZITEC           | 13.534 ( 4)  | 160.3 ( 1) | Ford Mustang SC281 | 13.273 ( 2)  | 162.9 ( 1) | 0.457  |
| 4.  | 30  | FÖLDI           | 13.277 ( 3)  | 145.4 ( 9) | VW Golf 11 16V     | 0,000 ( 0)   | 0.0 ( 0)   | 0.461  |
| 5.  | 51  | RAČEK           | 14.132 (10)  | 144.6 (10) | Subaru Impreza Gt  | 13.429 ( 3)  | 13.4 (26)  | 0.613  |
| 6.  | 1   | POTAKH          | 13.652 ( 5)  | 150.1 ( 3) | Honda Integra      | 13.679 ( 4)  | 152.0 ( 3) | 0.836  |
| 7.  | 29  | NOWAK           | 14.129 ( 9)  | 148.5 ( 6) | Fiat coupe         | 13.799 ( 5)  | 149.7 ( 4) | 0.983  |
| 8.  | 9   | ŠIMELA          | 13.822 ( 6)  | 149.5 ( 5) | Fiat punto         | 0,000 ( 0)   | 0.0 ( 0)   | 1.006  |
| 9.  | 28  | NOWAK           | 13.830 ( 7)  | 144.0 (12) | VW Golf I          | 0,000 ( 0)   | 0.0 ( 0)   | 1.014  |
| 10. | 20  | BRZOBOHATÝ      | 13.931 ( 8)  | 149.5 ( 4) | VW Golf GTI        | 0,000 ( 0)   | 13.931     | 1.115  |
| 11. | 18  | KOSAR           | 14.237 (11)  | 141.1 (13) | Opel Kadett BSI    | 14.214 ( 6)  | 142.2 ( 6) | 1.398  |
| 12. | 23  | BILÍK           | 14.324 (12)  | 145.7 ( 8) | Nissan 350 Z       | 14.707 ( 8)  | 143.5 ( 5) | 1.508  |
| 13. | 25  | ROLNÝ           | 14.361 (13)  | 146.3 ( 7) | Honda civic cupe   | 0,000 ( 0)   | 0.0 ( 0)   | 1.545  |
| 14. | 36  | JANÁK           | 14.524 (14)  | 136.5 (18) | Opel calibra       | 14.507 ( 7)  | 14.507     | 1.691  |
| 15. | 15  | KNEBEL          | 14.692 (15)  | 138.6 (16) | Peugeot 106        | 0,000 ( 0)   | 136.8 ( 7) | 1.876  |
| 16. | 39  | BOCEK           | 14.917 (21)  | 133.0 (23) | Golf I             | 14.721 ( 9)  | 14.721     | 1.905  |
| 17. | 26  | HILA            | 14.775 (16)  | 139.0 (14) | Honda              | 0,000 ( 0)   | 133.5 (10) | 1.959  |
| 18. | 10  | TDIGARAGE Marek | 14.815 (17)  | 0.0 ( 0)   | Audi cab TDI       | 0,000 ( 0)   | 14.815     | 1.999  |
| 19. | 43  | DUDÁŠ           | 14.848 (18)  | 135.4 (19) | Opel calibra       | 0,000 ( 0)   | 0.0 ( 0)   | 2.032  |
| 20. | 41  | GREGOŘICA       | 15.352 (24)  | 133.9 (21) | Citroen saxo       | 14.854 (10)  | 14.854     | 2.038  |
| 21. | 44  | MIKULA          | 14.855 (19)  | 139.0 (15) | Honda CRX          | 0,000 ( 0)   | 136.6 ( 8) | 2.039  |
| 22. | 52  | DEMBI           | 14.880 (20)  | 138.2 (17) | Mercedes CLS       | 0,000 ( 0)   | 14.880     | 2.064  |
| 23. | 35  | SCHMEJA         | 14.964 (22)  | 144.1 (11) | Alfa romeo         | 14.964 (11)  | 0.0 ( 0)   | 2.148  |
| 24. | 40  | KNĚZEK          | 15.171 (23)  | 133.7 (22) | BMW 325            | 15.369 (15)  | 136.2 ( 9) | 2.355  |
| 25. | 22  | STEINBERGER     | 15.615 (31)  | 129.4 (27) | VW Golf VRG        | 15.283 (12)  | 15.171     | 2.467  |
| 26. | 49  | KOLAČANSKÝ      | 15.505 (28)  | 126.8 (34) | Škoda 110 RMP      | 15.304 (13)  | 15.304     | 2.488  |
| 27. | 37  | SZYMONEK        | 15.466 (26)  | 129.2 (29) | VW Golf            | 15.366 (14)  | 126.9 (17) | 2.550  |
| 28. | 2   | TOKARČÍK        | 15.451 (25)  | 126.4 (35) | Honda civic        | 15.390 (16)  | 130.1 (15) | 2.574  |
| 29. | 53  | BUML            | 15.494 (27)  | 129.0 (30) | Dodge              | 0,000 ( 0)   | 126.4 (18) | 2.678  |
| 30. | 6   | KAČÍREK         | 15.527 (29)  | 128.6 (31) | VW Golf            | 0,000 ( 0)   | 15.527     | 2.711  |
| 31. | 27  | REMIÁŠ          | 15.877 (35)  | 127.8 (32) | Suzuki Swift       | 15.588 (17)  | 0.0 ( 0)   | 2.772  |

|            |           |                 |            |                          |               |       |  |  |
|------------|-----------|-----------------|------------|--------------------------|---------------|-------|--|--|
| <b>32.</b> | <b>12</b> | <b>CHŘIBEK</b>  |            | <b>Mini cuper</b>        | <b>15.592</b> |       |  |  |
|            |           | 15.592 (30)     | 134.0 (20) | 0,000 (0)                | 0.0 (0)       | 2.776 |  |  |
| 33.        | 54        | LIPINA          |            | Peugeot coupé 406        | 15.723        |       |  |  |
|            |           | 15.723 (32)     | 132.1 (24) | 0,000 (0)                | 0.0 (0)       | 2.907 |  |  |
| <b>34.</b> | <b>11</b> | <b>ZAVODNÝ</b>  |            | <b>Škoda Fabia</b>       | <b>15.732</b> |       |  |  |
|            |           | 15.732 (33)     | 131.5 (25) | 16.142 (22)              | 132.3 (12)    | 2.916 |  |  |
| 35.        | 7         | SEBERA          |            | Ford puma                | 15.778        |       |  |  |
|            |           | 15.778 (34)     | 129.3 (28) | 0,000 (0)                | 0.0 (0)       | 2.962 |  |  |
| <b>36.</b> | <b>14</b> | <b>SEZEMSKÝ</b> |            | <b>Dodge dakota</b>      | <b>15.842</b> |       |  |  |
|            |           | 17.674 (47)     | 115.7 (39) | 15.842 (18)              | 128.3 (16)    | 3.026 |  |  |
| 37.        | 19        | CIESLAR         |            | Ford Fiesta              | 15.880        |       |  |  |
|            |           | 16.212 (38)     | 127.2 (33) | 15.880 (19)              | 122.8 (20)    | 3.064 |  |  |
| <b>38.</b> | <b>8</b>  | <b>GUBANEC</b>  |            | <b>Fiat punto</b>        | <b>15.953</b> |       |  |  |
|            |           | 16.377 (41)     | 0.0 (0)    | 15.953 (20)              | 0.0 (0)       | 3.137 |  |  |
| 39.        | 42        | LUBOJÁČKÝ       |            | Citroen saxo             | 16.056        |       |  |  |
|            |           | 16.056 (36)     | 130.9 (26) | 16.459 (23)              | 126.3 (19)    | 3.240 |  |  |
| <b>40.</b> | <b>47</b> | <b>FARNIK</b>   |            | <b>Škoda 100</b>         | <b>16.069</b> |       |  |  |
|            |           | 16.113 (37)     | 119.5 (38) | 16.069 (21)              | 120.0 (21)    | 3.253 |  |  |
| 41.        | 3         | BLAŽEK          |            | Honda civic              | 16.218        |       |  |  |
|            |           | 16.218 (39)     | 126.3 (36) | 0,000 (0)                | 0.0 (0)       | 3.402 |  |  |
| <b>42.</b> | <b>16</b> | <b>PIKASO</b>   |            | <b>WV Vento</b>          | <b>16.233</b> |       |  |  |
|            |           | 16.233 (40)     | 0.0 (0)    | 0,000 (0)                | 0.0 (0)       | 3.417 |  |  |
| 43.        | 24        | SVOBODA         |            | Audi TT                  | 16.424        |       |  |  |
|            |           | 16.424 (42)     | 0.0 (0)    | 0,000 (0)                | 0.0 (0)       | 3.608 |  |  |
| <b>44.</b> | <b>38</b> | <b>KUBÍK</b>    |            | <b>Opel calibra</b>      | <b>16.777</b> |       |  |  |
|            |           | 16.777 (43)     | 121.8 (37) | 0,000 (0)                | 0.0 (0)       | 3.961 |  |  |
| 45.        | 48        | KRŮPA           |            | Opel togra               | 17.370        |       |  |  |
|            |           | 17.370 (44)     | 0.0 (0)    | 0,000 (0)                | 0.0 (0)       | 4.554 |  |  |
| <b>46.</b> | <b>4</b>  | <b>SOBOL</b>    |            | <b>Škoda</b>             | <b>17.583</b> |       |  |  |
|            |           | 17.583 (45)     | 112.1 (41) | 17.881 (26)              | 112.9 (23)    | 4.767 |  |  |
| 47.        | 31        | MACHÁČ          |            | Škoda Fabia              | 17.615        |       |  |  |
|            |           | 17.913 (50)     | 111.3 (42) | 17.615 (24)              | 114.5 (22)    | 4.799 |  |  |
| <b>48.</b> | <b>34</b> | <b>ŠUSTEK</b>   |            | <b>Škoda Favorit 135</b> | <b>17.635</b> |       |  |  |
|            |           | 17.635 (46)     | 108.7 (43) | 0,000 (0)                | 0.0 (0)       | 4.819 |  |  |
| 49.        | 13        | FILIP           |            | Hyundai coupe            | 17.704        |       |  |  |
|            |           | 17.704 (48)     | 115.1 (40) | 0,000 (0)                | 0.0 (0)       | 4.888 |  |  |
| <b>50.</b> | <b>50</b> | <b>NEVROBIK</b> |            | <b>Škoda 120</b>         | <b>17.787</b> |       |  |  |
|            |           | 17.787 (49)     | 106.9 (44) | 17.851 (25)              | 107.2 (24)    | 4.971 |  |  |
| 51.        | 5         | PAULOVÍČ        |            | Škoda Felicia            | 18.587        |       |  |  |
|            |           | 18.587 (51)     | 101.5 (46) | 0,000 (0)                | 0.0 (0)       | 5.771 |  |  |
| <b>52.</b> | <b>17</b> | <b>STROUHAL</b> |            | <b>Trabant</b>           | <b>18.666</b> |       |  |  |
|            |           | 18.666 (52)     | 102.1 (45) | 0,000 (0)                | 0.0 (0)       | 5.850 |  |  |
| 53.        | 32        | GALGAŇÁKOVÁ     |            | VW Golf 111              | 18.778        |       |  |  |
|            |           | 18.926 (53)     | 101.5 (47) | 18.778 (27)              | 106.4 (25)    | 5.962 |  |  |

Přihlášeno: 53 Startovalo: 53 Odstoupilo: 0 Diskvalifik.: 0 Dokončilo: 53